



SERVICE PARTS LIST

BULLETIN NO.
54-05-2570

SPECIFY CATALOG NO. AND SERIAL NO. WHEN ORDERING PARTS		REVISED BULLETIN	DATE
TRAPSSNAKE™ 25' Auger w/ CABLE DRIVE™			Sept. 2022
CATALOG NO.	49-16-2573	WIRING INSTRUCTION	
STARTING SERIAL NO.	M62A		

EXAMPLE:
00 0 Component Parts (Small #)
Are Included When Ordering
The Assembly (Large #).

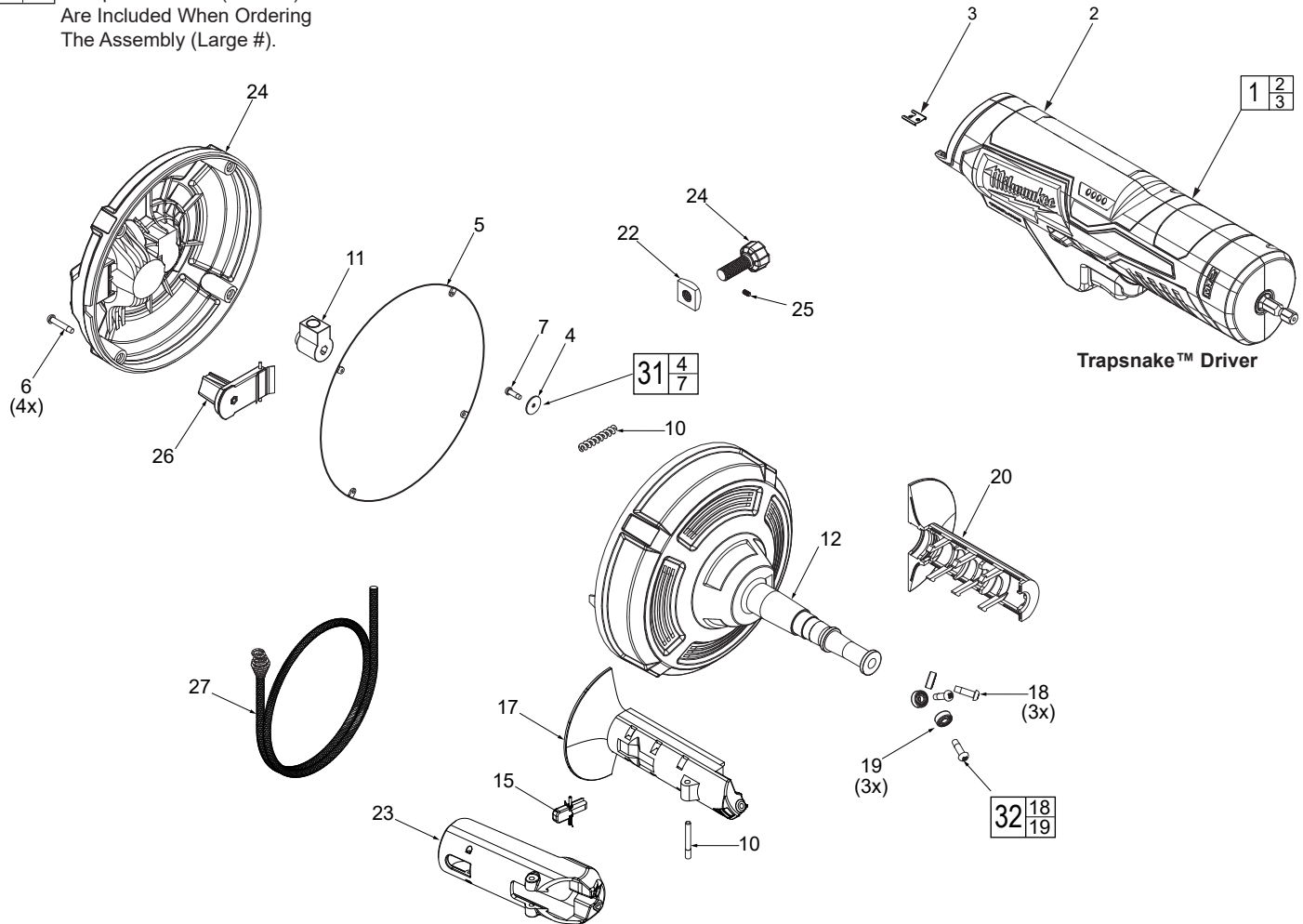


FIG.	PART NO.	DESCRIPTION OF PART	NO. REQ.
1	14-50-2576	Trapsnake™ Driver w/ Housing Clip	(1)
2	-----	Trapsnake™ Driver	(1)
3	42-70-0058	Housing Clip	(1)
4	-----	Cable Anchor Washer	(1)
5	34-40-1010	O-ring	(1)
6	06-82-0128	M4 x 22mm Taptite Screw	(4)
7	-----	Cable Anchor Screw	(1)
10	-----	Coupler Spring	(1)
11	-----	Coupler	(1)
12	-----	Front Drum Half	(1)
15	-----	Autofeed Lock	(1)
17	-----	Grip Bottom	(1)
18	-----	M4 x 16mm Taptite Screw	(3)
19	-----	Ball Bearing	(3)
20	-----	Grip Top	(1)
22	-----	M10 x 1.5mm Square Nut	(1)
23	-----	Autofeed Grip	(1)
24	-----	Cable Lock Screw	(1)
25	-----	M3 Set Screw	(1)
26	-----	Crank Arm	(1)
27	48-53-2579	Replacement Cable	(1)
31	14-46-2503	Cable Anchor Service Kit	(1)
32	14-46-2504	Autofeed Bearing and Screw Kit	(1)
33	12-20-2573	Service Nameplate (not shown)	(1)
34	10-20-1939	Warning Label (not shown)	(1)
35	12-20-2508	Driver Service Nameplate (not shown)	(1)

SCREW TORQUE SPECIFICATIONS				
FIG.	PART NO.	WHERE USED	SEAT TORQUE	
			(KG/CM)	(IN/LBS)
6	06-82-0128	Drum Screw	10-12	9-10
7	-----	Cable Anchor Screw	4-6	3-5
18	-----	Autofeed Screw	10-12	9-10

FIG. 33,34 NOTES
A clean, dry surface is essential for proper performance for any adhesive system. The area intended for application of any adhesive label or nameplate must be prepared by cleaning with isopropyl alcohol. The solvent is to be applied with a clean, lint free applicator and the surface allowed to dry before applying the label or nameplate.