



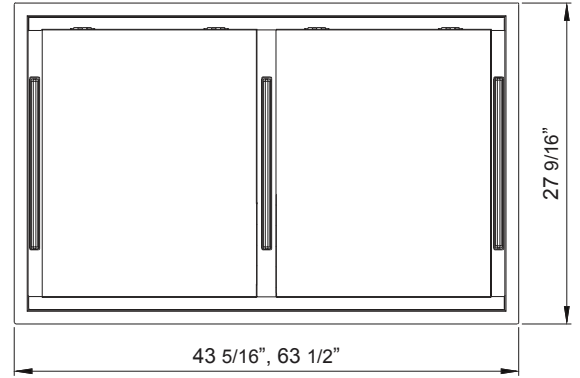
63" Stainless Steel



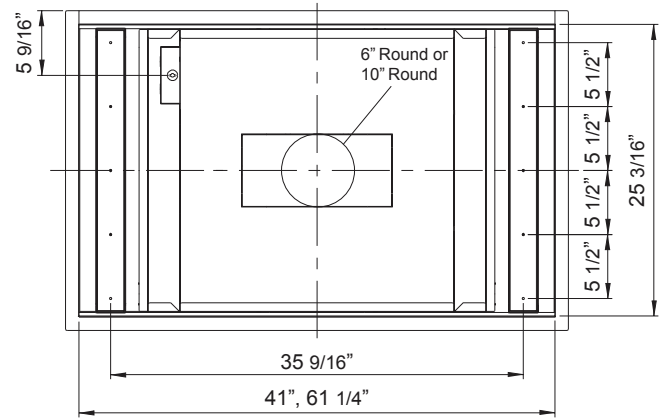
43" White



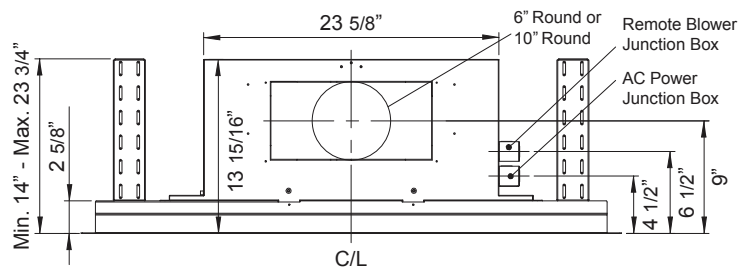
Includes Wireless Remote Control



Front*



Top



Side

*ALU-E43 has 2 panels, ALU-E63 has 3 panels

MODEL

Stainless Steel	ALU-E43CSX	ALU-E63CSX
White	ALU-E43CWX	ALU-E63CWX
Size	43"	63"

PERFORMANCE

Internal Blower (CBI-290C)*	200-290 CFM, 1.4-3 sones	200-390 CFM, 1.4-3 sones
Internal Blower (CBI-390A)*	200-390 CFM, 1.4-5 sones	200-290 CFM, 1.4-5 sones
Internal Blower (CBI-600A)*	240-600 CFM, 1.8-6 sones	240-600 CFM, 1.8-6 sones
Internal Blower (PBI-1100B)*	500-1,100 CFM, 3.5-8 sones	500-1,100 CFM, 3.5-8 sones
In-Line Blower (PBN-1000A)*	500-1,000 CFM, sones NA	500-1,000 CFM, sones NA
External Blower (CBE-1000)*	500-1,000 CFM, sones NA	500-1,000 CFM, sones NA

FEATURES

Zephyr Connect App Compatible	Yes	Yes
Alexa & Google Home Compatible	Yes	Yes
Controls	Capacitive Touch	Capacitive Touch
Speed Levels	3	3
Auto Delay-Off	Yes	Yes
CleanAir Function**	Yes	Yes
Lighting	BriteStrip™ LED x3 (10W)	BriteStrip™ LED x4 (10W)
Tri-Level Lighting	Yes	Yes
Filters	Aluminum Mesh x4	Aluminum Mesh x6
Wireless Remote Control	Yes, RF	Yes, RF
Recirculating***	Yes	Yes
ADA Compliant	Yes	Yes

DUCT SPECIFICATIONS

Vertical Internal Blower	6"(CBI), 10"(PBI)	6"(CBI), 10"(PBI)
Vertical In-Line/External Blower	10"	10"
Horizontal Internal Blower	6"(CBI), 10"(PBI)	6"(CBI), 10"(PBI)
Horizontal In-Line/External Blower	10"	10"

AC POWER

Hood w/ CBI-290C	120V, 60Hz, Max. 1.05A	120V, 60Hz, Max. 1.05A
Hood w/ CBI-390A	120V, 60Hz, Max. 2.1A	120V, 60Hz, Max. 2.1A
Hood w/ CBI-600A	120V, 60Hz, Max. 3.05A	120V, 60Hz, Max. 3.05A
Hood w/ PBI-1100B	120V, 60Hz, Max. 5.75A	120V, 60Hz, Max. 5.75A
Hood w/ PBN-1000A	120V, 60Hz, Max. 5.75A	120V, 60Hz, Max. 5.75A
Hood w/ CBE-1000	120V, 60Hz, Max. 6.55A	120V, 60Hz, Max. 6.55A

OPTIONAL ACCESSORIES

Recirculating Kit	ZRC-01LX	ZRC-01LX
Make-Up Air Kit	MUA006A (600 CFM) MUA008A (1,000 CFM) MUA010A (1,100 CFM)	MUA006A (600 CFM) MUA008A (1,000 CFM) MUA010A (1,100 CFM)

MOUNTING HEIGHT RANGE†	30" - 72"	30" - 72"
------------------------	-----------	-----------

WARRANTY	1 year parts, 1 year labor	1 year parts, 1 year labor
----------	----------------------------	----------------------------

CEILING HEIGHT	6'	6.5'	7'	7.5'	8'	8.5'	9'
MOUNTING HEIGHT†	36"	42"	48"	54"	60"	66"	72"

*Blower sold separately.

**CleanAir turns your hood on once every four hours for 10 minutes on speed one.

***Recirculating kit is only compatible with CBI-290C and CBI-600A blowers.

†Mounting height refers to distance between top of a 36" tall cooking surface and bottom of hood.

**Zephyr Connect App**

Zephyr Connect App allows you to control your range hood from anywhere using your mobile device. It includes real time diagnostics and provides important product information. All you need is a WiFi connection with access to the internet. It seamlessly integrates with your smart devices such as Amazon Alexa or Google Home smart speaker for voice activation. Available to download from Google Play or the App Store.

Specifications subject to change, check zephyronline.com for up-to-date information.
Zephyr Ventilation | 2277 Harbor Bay Parkway, Alameda, CA 94502 | 888.880.VENT

JUL22.0101

