

# BERWYN SINGLE-HOLE BATHROOM FAUCET

SKU: 953646



## CODES/STANDARDS

ASME A112.18.1/CSA B125.1

NSF/ANSI 372

NSF/ANSI/CAN 61

CEC Listed

Massachusetts Accepted



## FEATURES

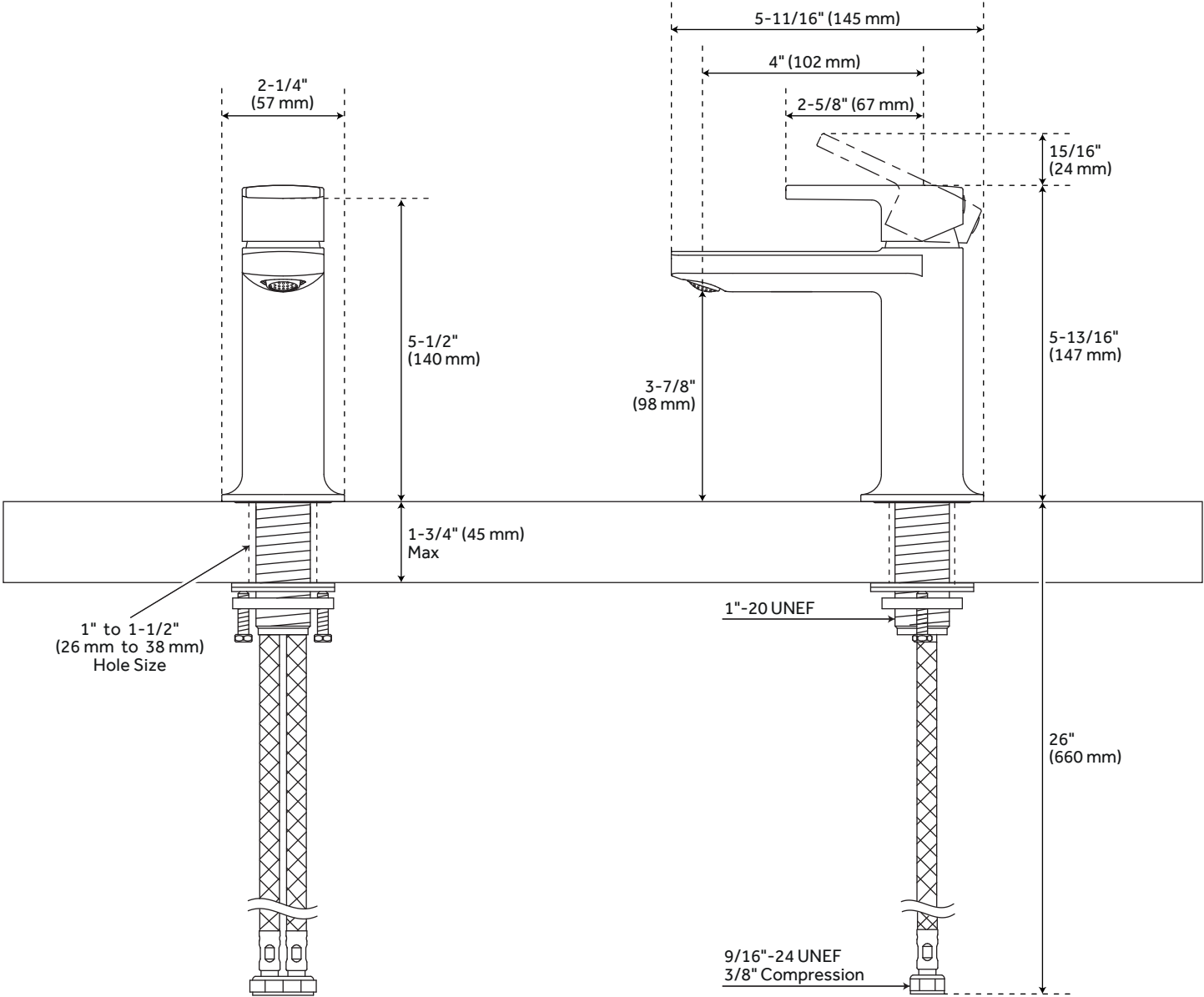
Installation Type: Deck Mount  
Design: Modern  
Length: 5-11/16"  
Width: 2-1/4"  
Height: 5-13/16"  
Base Plate Length: 2-1/4"  
Faucet Centers: Single-Hole  
Overflow Hole: Yes  
Fits Drain Hole Size: 1-1/2"  
Drain Included: Yes  
Faucet Material: Metal  
Handle Type: Lever  
Handle Length: 2-5/8"  
Base Plate Width: 2-1/4"  
IPS: 3/8"  
Flow Rate: 1.2 gpm (4.5 L/min) @ 60 psi  
Max. Countertop Thickness: 1-3/4"  
Height To Spout: 3-7/8"  
Spout Reach: 4"  
Handle Height: 5-1/2"  
Ceramic Disc Cartridges: Yes  
Hot and Cold Indicators: No

Code: SHWSCBW100

REVISED 7/5/2022

# BERWYN SINGLE-HOLE BATHROOM FAUCET

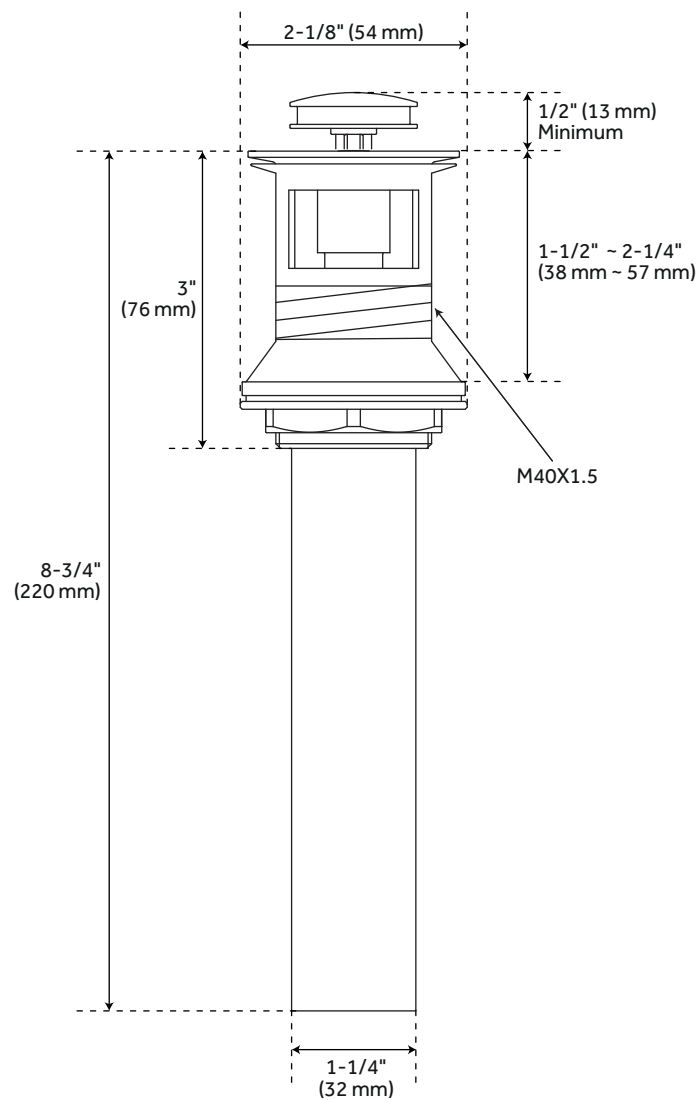
SKU: 953646  
SHWSCBW100



All dimensions and specifications are nominal and may vary. Use actual products for accuracy in critical situations.

# BERWYN DRAIN WITH OVERFLOW

SKU: 953646  
SHWSCBW100



All dimensions and specifications are nominal and may vary. Use actual products for accuracy in critical situations.