

ALTA

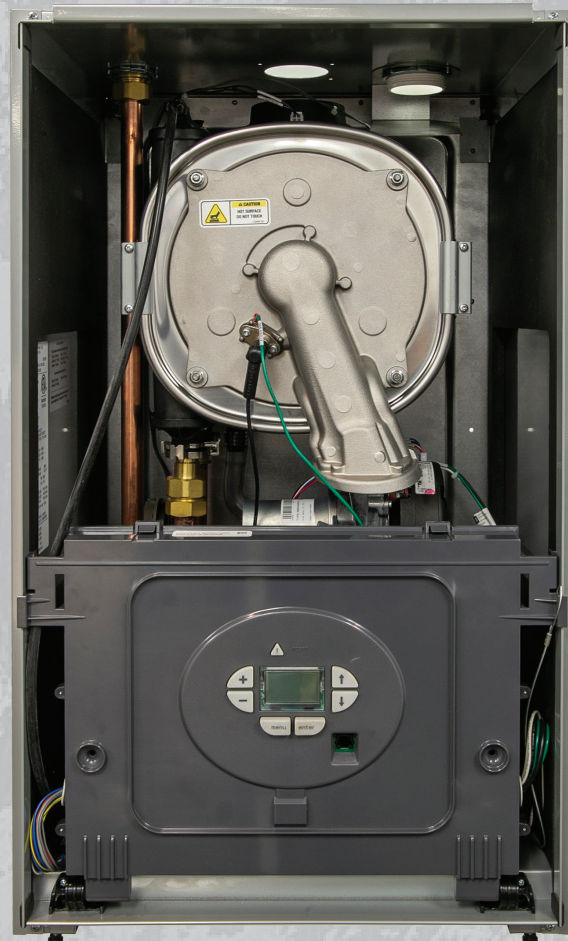


The EASIEST boiler you'll ever install
because it's the MOST ADVANCED
boiler ever made.

- Unmatched simplicity
- Next-generation adaptive combustion
- High performance combi models
- Industry leading value



Designed, engineered, & built
in Lancaster, PA
U.S.A.



ALTA

UNMATCHED SIMPLICITY

- No-touch combustion setup, engineered for five-minute start-up
- Self-diagnostic boiler control
- Rate-based temperature reset, no outdoor sensor required – assesses environmental conditions, continually adjusting boiler operation for comfort and efficiency
- Three-side unobstructed service access - fast removal of front and side panels
- Simple 2-step natural gas-to-LP conversion with no kits or additional parts required
- Easy lift, wall hanging design (floor stand optional)
- Alta FastPipe (primary/secondary piping) included on combi models, optional on heating models

NEXT-GENERATION ADAPTIVE COMBUSTION

- Continuous high-efficiency combustion without manual throttle or offset adjustments
- Automatic self-calibration adjusts to variables in environment, component wear, gas & vent pressure
- Low gas pressure capability (2.5 in. wc gas, 8.0 in. wc LP)

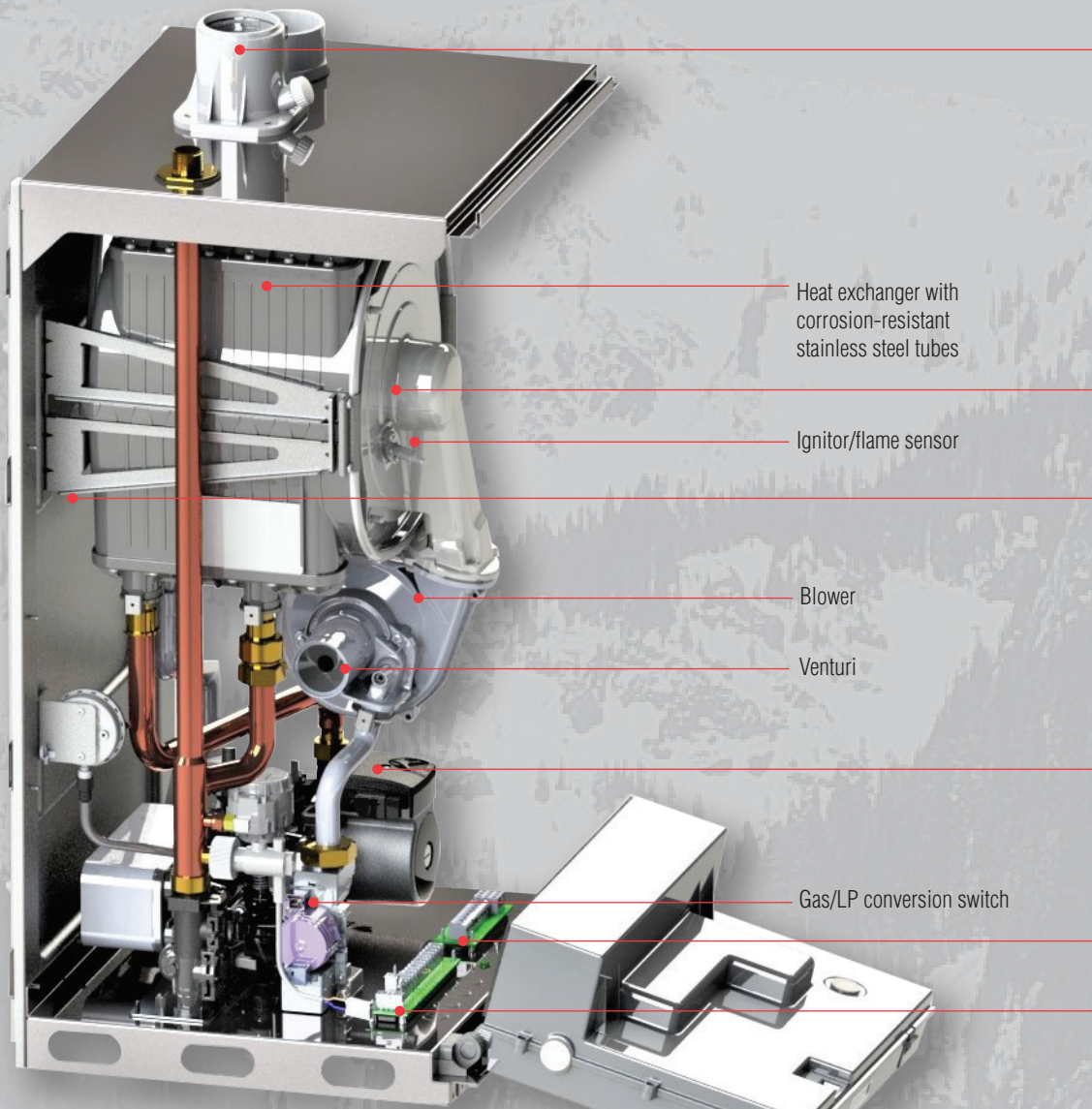
HIGH PERFORMANCE COMBI MODELS

- **The world's first 10:1, gas adaptive combi boiler!**
- Virtually instantaneous DHW response time
- Selectable economy or comfort/recirculation modes
- DHW temperature maintained under all demand conditions
- 10:1 DHW turndown conserves fuel and extends boiler life
- Integrated DHW hydro block with quick-disconnect flat plate DHW heat exchanger, boiler circulator, 3-way valve, and instantaneous DHW flow sensor

INDUSTRY-LEADING VALUE

- 5-year parts warranty, 12-year limited warranty on heat exchanger
- Universal vent connection for CPVC, polypropylene
- Boiler flow safety switch (UL353)
- 95% AFUE





Alta combi models (service view)

Heat exchanger with corrosion-resistant stainless steel tubes

Ignitor/flame sensor

Blower

Venturi

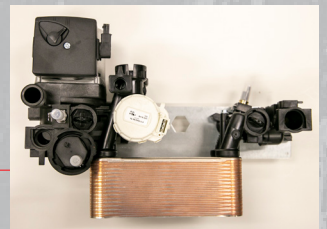
Gas/LP conversion switch



2" universal vent connection, 2" intake

Heat exchanger door with quick 4-nut access

Unibody enclosure with removable front & side panels permits unobstructed 3-side service access



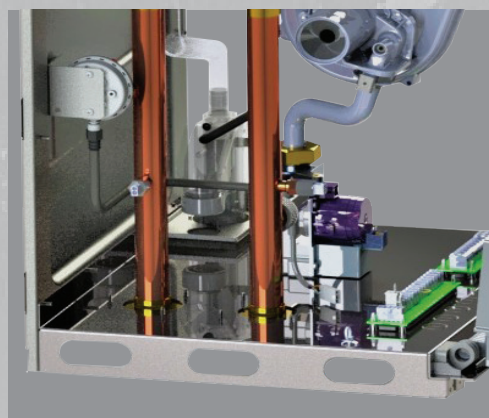
Integrated DHW hydro block with quick disconnect heat exchanger

120 VAC connection board

Low voltage connection board



Boiler control enclosure – hinges downward for access



Alta heating-only models (service view)

Near Boiler Piping

AltaFastPipe (primary/secondary header) is included with Alta combi boilers. This single piece copper component includes a temperature/pressure gauge and 1-1/4" supply/return connections.

A near boiler piping kit (P/N: 111577-01) is available as an option on Alta heating-only models. This kit provides a premium manifold, isolation valves, fittings and copper piping to complete 1 1/4 inch primary/secondary piping.





Standard Equipment - All Models

- Direct vent, 10:1 turndown, sealed combustion appliance
- Stainless steel 316L heat exchanger, corrosion resistant
- Alta Control System
 - Automatic “no-touch” combustion management
 - Built-in self diagnostics
 - 2 inputs (T-stat, DHW)
 - Warm weather shutdown
 - Two step LP conversion at gas valve switch and display - no kit purchase required
 - Sensor-less, rate-based reset
 - Fuse protected, spare fuses provided
 - Separated high and low voltage connections
- Boiler flow safety switch (UL353)
- Low gas pressure capability;
 - Min: 2.5 in. wc (nat gas), 8.0 in. wc (LP gas)
- Three side, unobstructed service access jacket
- Vent connection for CPVC/PVC, polypropylene
- Pre-installed hanging bracket and wall mount kit
- Circulator
 - Grundfos 26-99 (heating-only models)
 - Grundfos UPS-78 Special (combi models)

Combi Models

- Integrated hydro block system with flat plate heat exchanger, boiler circulator, and 3-way valve
- AltaFastPipe (pre-made primary/secondary manifold)

Ratings & Specifications

Model	 AFUE %	Heating Input (MBH) min-max	DOE Heating Capacity (MBH)	Net AHRI (MBH)	DHW Rates			Vent Size (In.)	Boiler Wt. (lbs.)
					at 70° TR (GPM)	at 77° TR (GPM)	Input (MBH) min-max		
ALTAC-136	95.0	13.6-120	112	97	3.7	3.4	13.6-136	2	95
ALTAC-200	95.0	20-150	141	123	5.2	4.7	20.0-200	2	116
ALTA-120	95.0	13.6-120	112	97	—	—	—	2	76
ALTA-150	95.0	20-150	141	123	—	—	—	2	103
ALTA-180	95.0	20-180	169	147	—	—	—	2	103

Net AHRI Water Ratings shown are based on a piping and pickup allowance of 1.15. The manufacturer should be consulted before selecting a boiler for installations having unusual piping and pickup requirements, such as intermittent operation, extensive piping systems, etc.

Safety Relief Valve Pressure, Water – 30 PSI std. ASME certified “H”. Maximum Allowable Working Pressure at 50 PSI. Max allowable temperature setting 210°F. Target setpoint is 180°F, manual reset high limit setpoint is 210°F. Boilers shipped set for natural gas. Above performance is for elevations to 2000'. Never install a boiler SKU with a 'G02' suffix above 2000 ft.

Boiler Depth

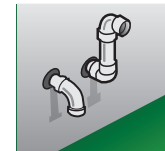
Model	“A” (Inches)
ALTAC-136	16.3
ALTAC-200	20.4
ALTA-120	16.3
ALTA-150	20.4
ALTA-180	20.4

Accessories:

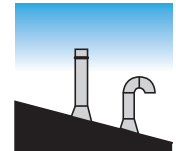
- Near boiler piping kit for heating-only models (P/N: 111577-01)
- Floor stand kit (P/N: 111576-01)
- Service part kit (P/N 111419-01)
- Kit, CPVC starter and PVC vent terminations: (2” P/N: 107039-01)

Typical Venting Configurations (Horizontal and Vertical)

Illustrations are for representation only. For complete venting information, please see Installation, Operating and Service Instructions.



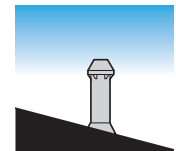
Horizontal 2-pipe



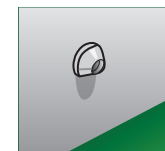
Vertical 2-pipe



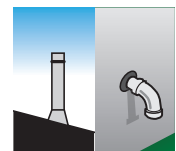
Horizontal 2-pipe low profile



Vertical 2-pipe concentric



Horizontal 2-pipe concentric



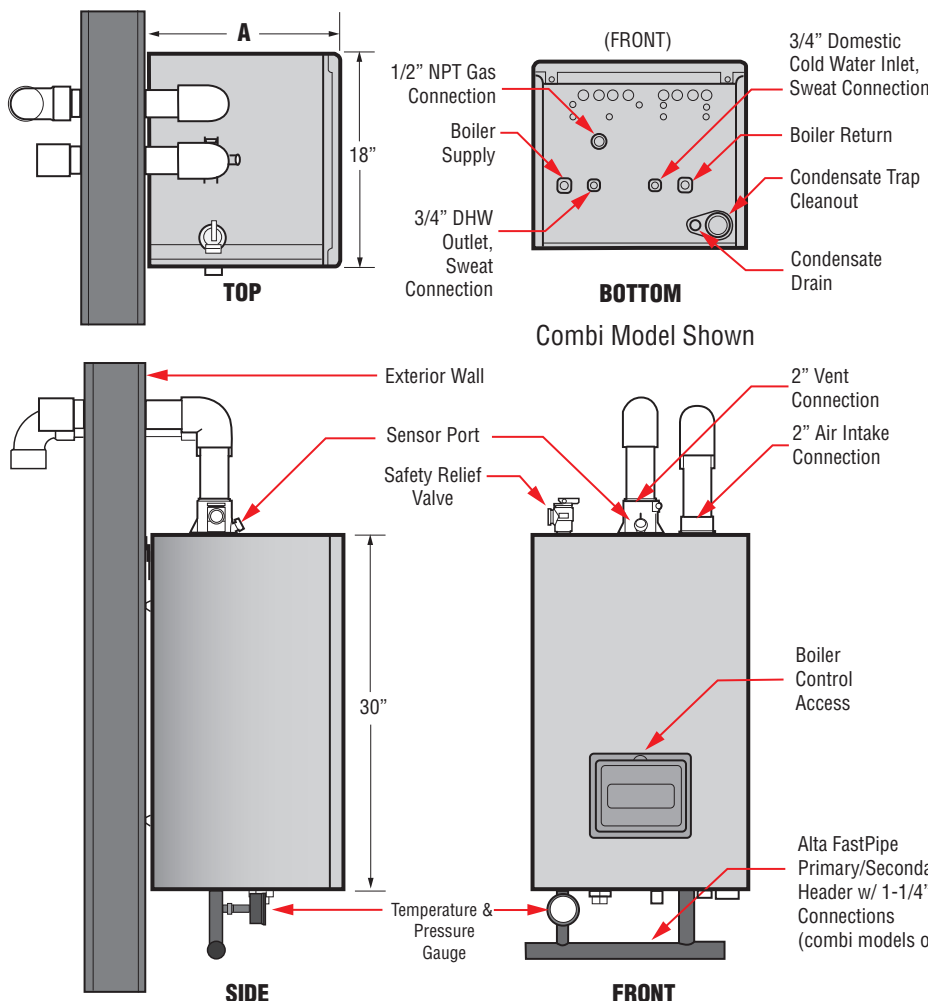
Hybrid



Vertical exhaust/sealed B-vent for combustion air



PLUS polypropylene chimney chase option



www.usboiler.net

©2022 U.S. Boiler Company, Inc.
Lancaster, PA
Phone: 1-888-432-8887