



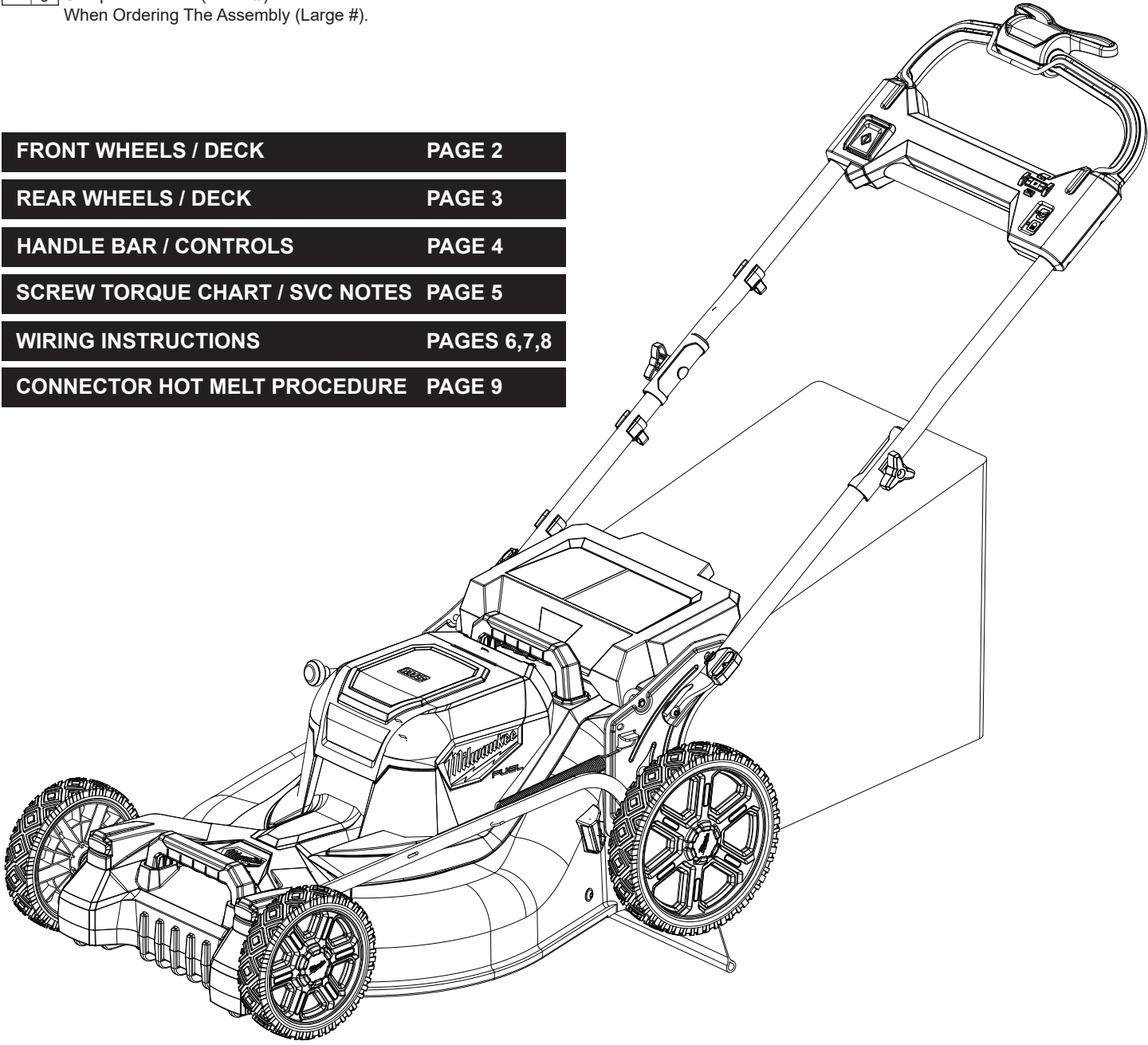
# SERVICE PARTS LIST

**BULLETIN NO.  
54-00-2823**

<b>SPECIFY CATALOG NO. AND SERIAL NO. WHEN ORDERING PARTS</b>		REVISED BULLETIN	DATE
<b>M18 FUEL™ 21" Self-Propelled Dual Battery Mower</b>			Feb. 2023
<b>CATALOG NO.</b>	<b>2823-20</b>	<b>STARTING SERIAL NO.</b>	<b>M44A</b>
		<b>WIRING INSTRUCTION See Pages 6, 7 &amp; 8</b>	

**EXAMPLE:**  
 Component Parts (Small #) Are Included  
 When Ordering The Assembly (Large #).

<b>FRONT WHEELS / DECK</b>	<b>PAGE 2</b>
<b>REAR WHEELS / DECK</b>	<b>PAGE 3</b>
<b>HANDLE BAR / CONTROLS</b>	<b>PAGE 4</b>
<b>SCREW TORQUE CHART / SVC NOTES</b>	<b>PAGE 5</b>
<b>WIRING INSTRUCTIONS</b>	<b>PAGES 6,7,8</b>
<b>CONNECTOR HOT MELT PROCEDURE</b>	<b>PAGE 9</b>



210	1	2b	3	4	9
	10	11	13	14	15
	16	17	18	144	147

205	2b	2c	5	6
	7	27	42	130

206	2c	12	20
	22	27	

204	2b	23	24	27
	28	29	38	53

200	2b	8	30	35b	43
	44	45	46	79	108

207	26	50
	51	52

202	47	48
	49	

201	2b	18b	21c	25	28
	29	31	32	33	39
	42	128			

203	28	29	36	61
	110b	139		

209	54	55	56
	57	58	59

FIG.	PART NO.	DESCRIPTION OF PART	NO. REQ.
1		Battery Power Head Cover	(1)
2b	06-82-1076	M4 x 16mm Pan Hd. Tapitite T-20 Screw	(27)
2c	06-82-1076	M4 x 16mm Pan Hd. Tapitite T-20 Screw	(8)
3		Rubber Bumper	(2)
4		Power Head Housing	(1)
5		Battery Interface - Left	(1)
6		Battery Interface - Middle	(1)
7		Battery Interface - Right	(1)
8		Back Mower Housing	(1)
9		Power Cable Strain Relief	(1)
10		Top Cover Torsion Spring	(1)
11		Top Cover Hinge Pin	(1)
12		Flat Washer	(2)
13		Fuel Power Lens	(1)
14		Lens Plate	(1)
15		Fuel Gauge PCBA	(1)
16	06-82-0276	M3 Pan Washer Hd. ST Phillips Screw	(2)
17		Hinge Containment Tab	(2)
18	05-81-1195	M3 x 8mm Pan Hd. SP T-10 Screw	(8)
19	31-44-0219	Rear Deck Lift Handle	(1)
20		Boat Securing Bracket	(1)
21c	05-81-0005	M3 x 11mm Pan Hd. Tapitite T-10 Screw	(4)
22		Main PCBA	(1)
23	31-44-0221	Front Deck Lift Handle	(1)
24		Front Mower Housing	(1)
25		Headlight Assembly	(1)
26		Front Shaft Mount	(2)
27	05-71-0017	M4 x 10mm Pan Hd. ST T-20 Screw	(5)
28		3/16" Wire Clip	(15)

FIG.	PART NO.	DESCRIPTION OF PART	NO. REQ.
29	05-88-1100	M3 x 10mm Pan Washer Hd. ST T-10 Sc.	(15)
30	16-01-0072	Motor	(1)
31	05-55-0022	M5 Hex Nut with Nylon Insert	(4)
32		Sidelight Assembly-Left	(1)
33		Right Sidelight Housing	(1)
34		Height Adjustment Backstop	(1)
36		M8 Square Nut	(1)
37		Rear Guard	(1)
38	05-74-0246	M6 x 16mm Pan Hd. T-30 Mach. Screw	(7)
39		Left Sidelight Housing	(1)
41	05-78-0032	M5 x 13mm Pan Hd. T-25 Mach. Screw	(4)
42		Wire Cover	(1)
43		Mower Deck	(1)
44	31-44-0381	Blade Motor Housing	(1)
45		Flat Washer	(4)
46	05-74-0242	M6 x 25mm Pan Hd. T-30 Mach. Screw	(4)
47	45-94-0084	Plastic Wheel Cap	(2)
48	05-55-0158	M10 Hex Nut with Nylon Insert	(2)
49		Front Wheel	(2)

FIG.	PART NO.	DESCRIPTION OF PART	NO. REQ.
50		Front Axle Weldment	(1)
51		Front Axle Mount Plate	(2)
52	05-74-0243	M5 x 44mm TH T-25 Machine Screw	(4)
53		Front Deck Baffle	(1)
54		Fan Spacer	(1)
55		Blade Motor Fan	(1)
56		21" Lawn Mower Blade	(1)
57	28-20-0102	Shear Plate	(1)
58		Blade Washer	(1)
59	44-40-0027	M12 Flange Nut	(1)
61		Rear Discharge Baffle	(1)
110b	05-74-0244	M8 x 20mm BUWH Hex Recess Screw	(3)
128		Sidelight Assembly-Right	(1)
130		Cord Clamp	(1)
139	05-74-0245	M6 x 10mm Pan Hd. Hex Recess Mach.	(1)
142		Rear Guard Plate	(1)
144	19-98-0163	Fuel Gauge Decal	(1)
147	10-20-7266	2 Battery Decal	(1)
200	14-50-0053	Mower Chassis and Motor Assembly	(1)
201	14-46-0408	LED Worklight Assemblies	(1)
202	28-41-0033	Front Wheel Assembly (Set of One)	(2)
203	42-14-0029	Baffle Assembly	(1)
204	28-50-0019	Front Housing Assembly	(1)
205	44-81-0014	Battery Rail Assembly	(1)
206		Main PCBA Service Kit	(1)
207	42-12-0024	Front Axle Service Kit	(1)
208	28-41-0018	Rear Guard Service Kit	(1)
209	22-84-0017	Blade/Motor Fan Service Kit	(1)
210	14-38-0113	Power Head Cover Assembly	(1)

FIG.	PART NO.	DESCRIPTION OF PART	NO. REQ.
35b	05-74-0241	M8 x 16mm Pan Hd. T-40 Mach. Screw	(10)
40	-----	Deck Height Adjustment Spring	(1)
43	-----	Mower Deck	(1)
47	45-94-0084	Plastic Wheel Cap	(2)
48	05-55-0158	M10 Hex Nut with Nylon Insert	(2)
60	-----	Height Adjustment Linkage Weldment	(1)
62	-----	Rear Wheel Assembly	(2)
63	-----	Wheel Gear	(2)
64a	05-78-5311	M5 x 18mm Pan Hd. Plast. T-20 Screw	(6)
65	-----	Retaining Ring	(2)
66	-----	Transmission Shaft Pinion	(2)
67	05-81-0266	M4 x 8mm Pan Hd. T-20 Mach. Screw	(2)
68	-----	Rear Wheel Drive Cover	(2)
69	-----	Height Adjustment Handle	(1)

70	-----	Deck Height Adjustment Torsion Spring	(1)
71	-----	Cotter Pin	(1)
72	-----	Rear Axle Weldment	(1)
73	-----	E-Retaining Ring	(4)
74	-----	Rear Bagger Door Hanging Rod	(1)
75	-----	Rear Door Torsion Spring	(1)
76	-----	Rear Bagger Door	(1)

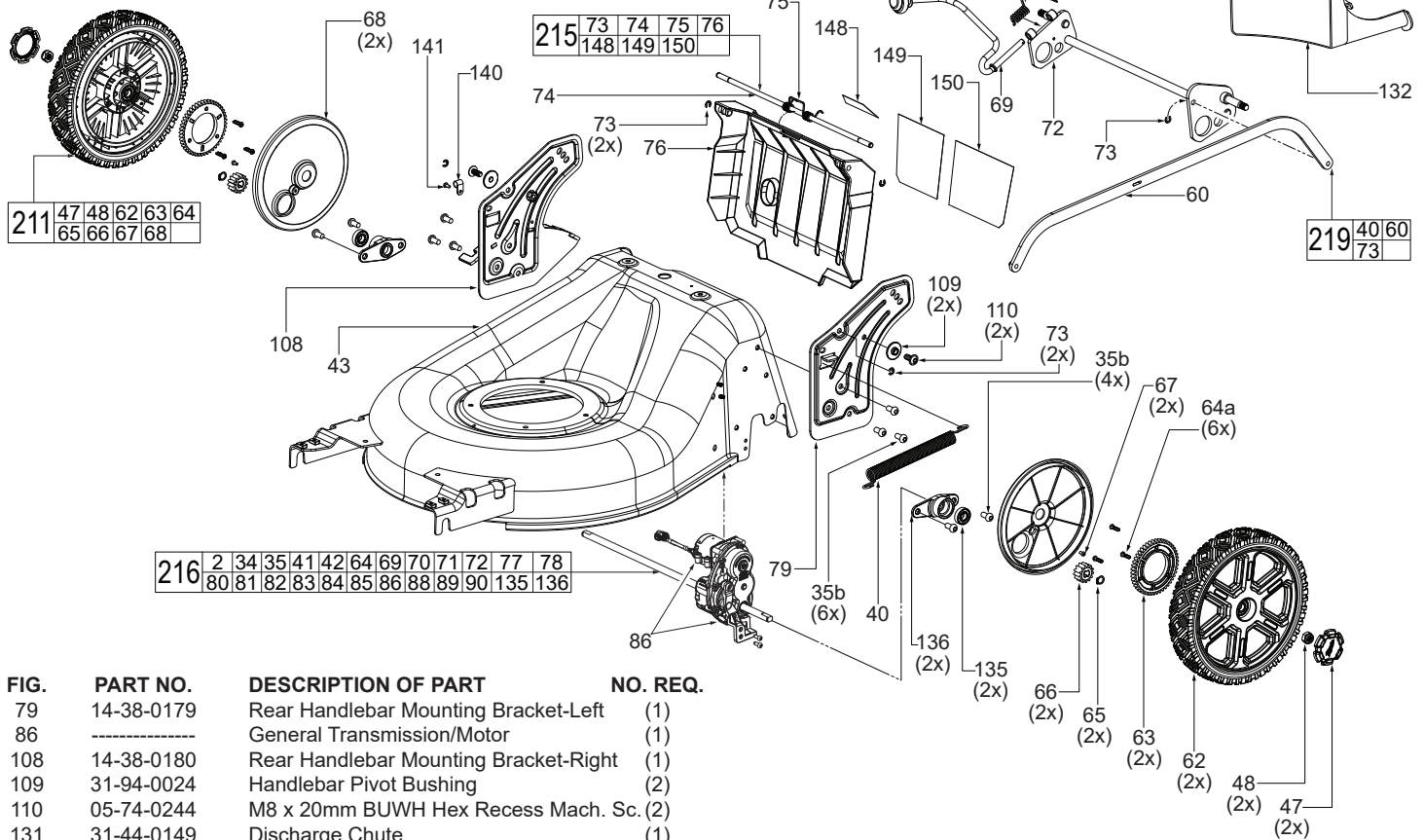
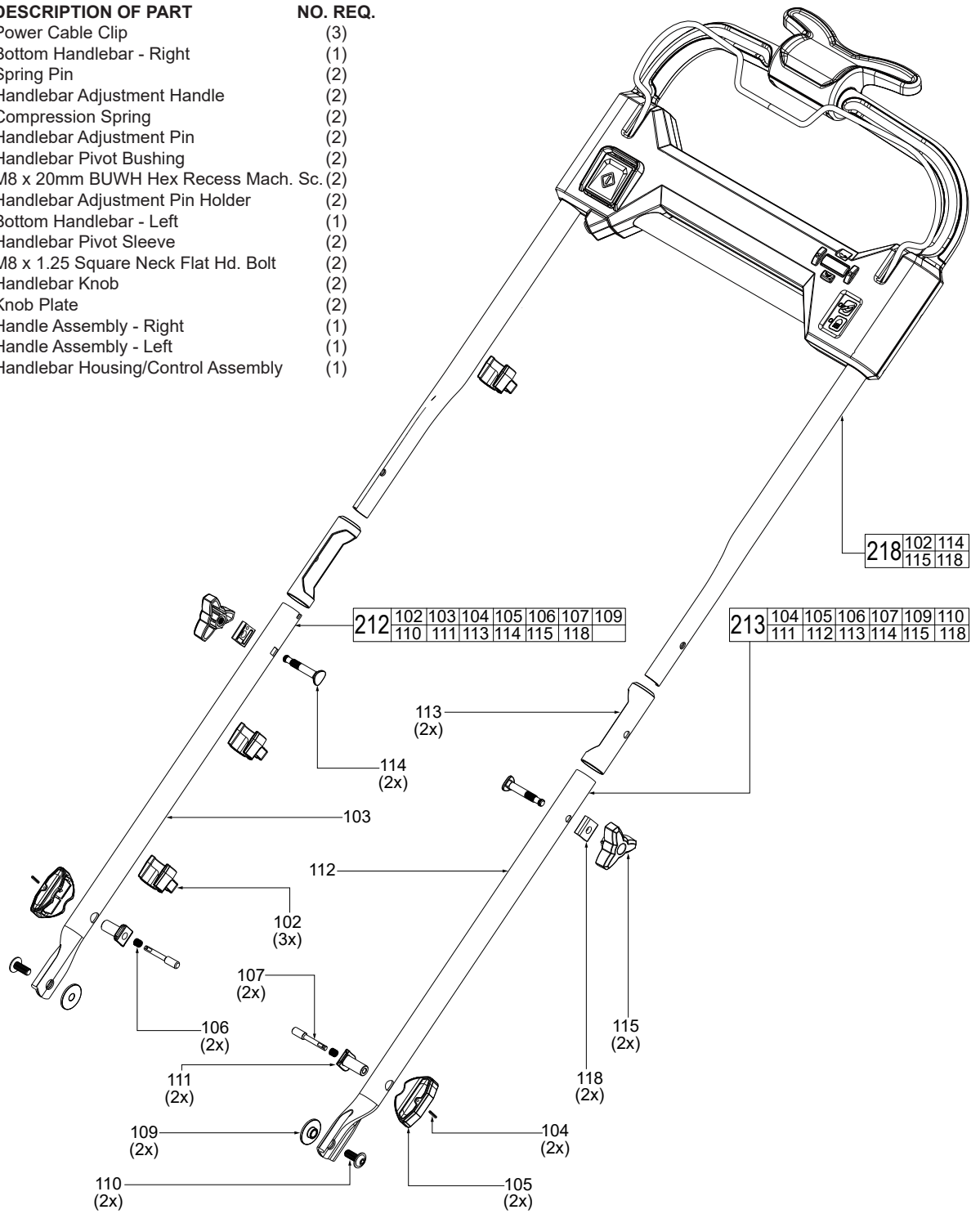


FIG.	PART NO.	DESCRIPTION OF PART	NO. REQ.
79	14-38-0179	Rear Handlebar Mounting Bracket-Left	(1)
86	-----	General Transmission/Motor	(1)
108	14-38-0180	Rear Handlebar Mounting Bracket-Right	(1)
109	31-94-0024	Handlebar Pivot Bushing	(2)
110	05-74-0244	M8 x 20mm BUWH Hex Recess Mach. Sc.	(2)
131	31-44-0149	Discharge Chute	(1)
132	31-44-0147	Mower Mulch Plug	(1)
133	28-20-0212	Rear Discharge Bagger Assembly	(1)
134	43-62-0049	Bagger Frame Weldment	(1)
135	-----	Ball Bearing	(2)
136	-----	Rear Wheel Drive Hub	(2)
140	-----	3/8" Wire Clip	(1)
141	05-81-1030	M4 Hex Screw	(1)
148	12-20-0525	Service Nameplate	(1)
149	10-20-7258	Warning and Safety Decal-Right	(1)
150	10-20-7257	Warning and Safety Decal-Left	(1)
211	28-50-0023	Rear Wheel Assembly (Set of One)	(2)
215	43-70-0021	Rear Bagger Door Assembly	(1)
216	23-30-0017	Transmission and Motor Assembly	(1)
219	43-40-0021	Linkage/Spring Service Kit	(1)

FIG.	PART NO.	DESCRIPTION OF PART	NO. REQ.
102	22-44-0010	Power Cable Clip	(3)
103	-----	Bottom Handlebar - Right	(1)
104	-----	Spring Pin	(2)
105	-----	Handlebar Adjustment Handle	(2)
106	-----	Compression Spring	(2)
107	-----	Handlebar Adjustment Pin	(2)
109	31-94-0024	Handlebar Pivot Bushing	(2)
110	05-74-0244	M8 x 20mm BUWH Hex Recess Mach. Sc.	(2)
111	-----	Handlebar Adjustment Pin Holder	(2)
112	-----	Bottom Handlebar - Left	(1)
113	31-44-0174	Handlebar Pivot Sleeve	(2)
114	05-74-0102	M8 x 1.25 Square Neck Flat Hd. Bolt	(2)
115	43-98-0307	Handlebar Knob	(2)
118	45-88-0279	Knob Plate	(2)
212	31-44-0173	Handle Assembly - Right	(1)
213	31-44-0189	Handle Assembly - Left	(1)
218	31-44-0196	Handlebar Housing/Control Assembly	(1)

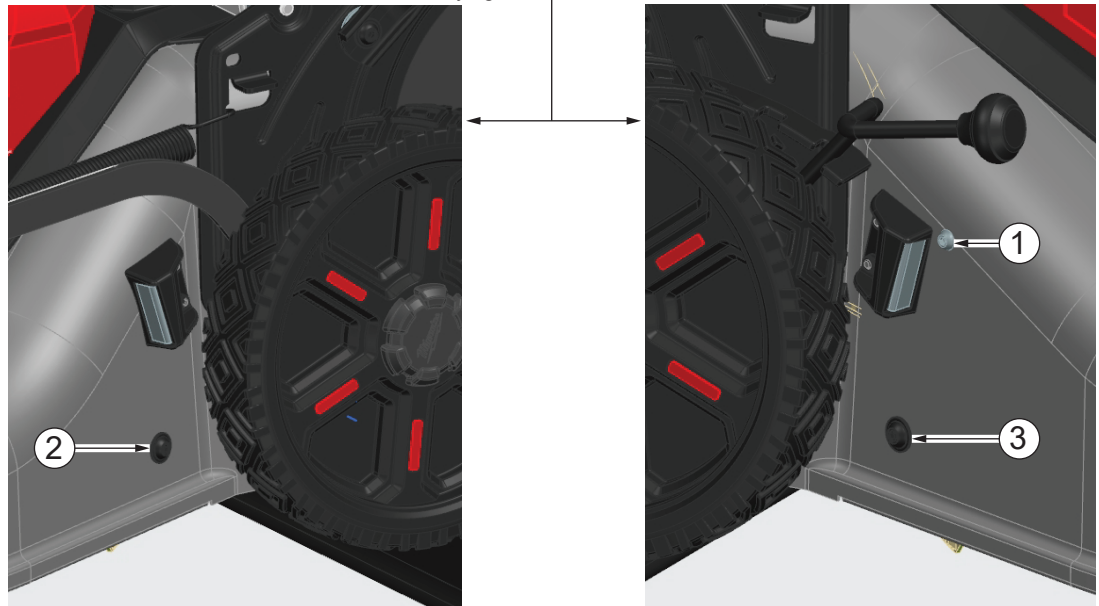
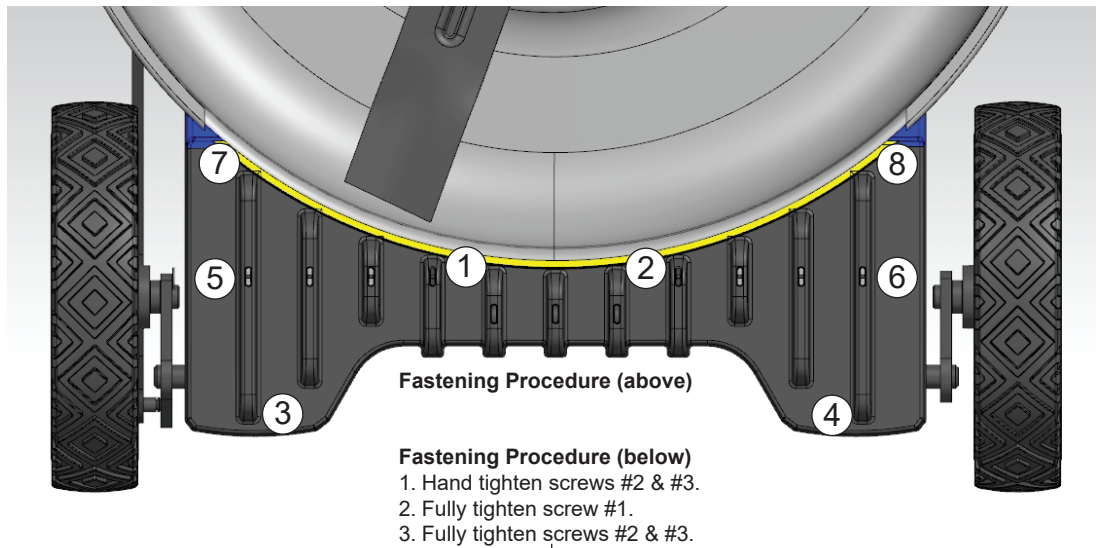




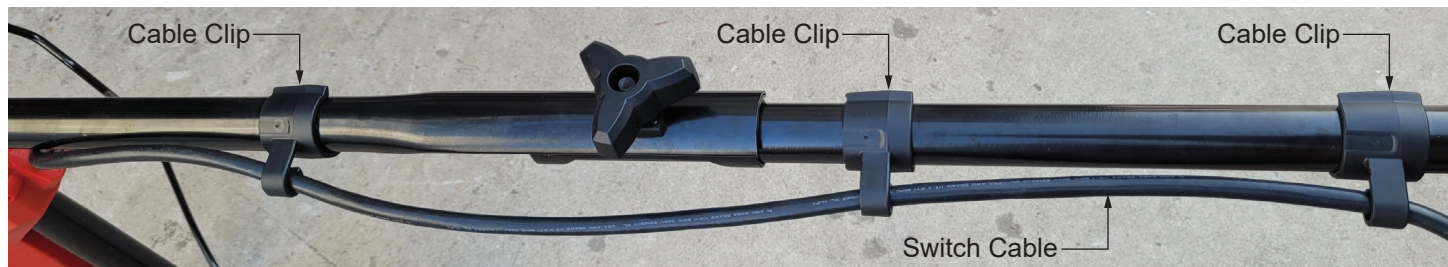
# SCREW TORQUE SPECIFICATIONS

FIG.	PART NO.	DESCRIPTION OF FASTENER	WHERE USED	SEAT TORQUE	
				(KG/CM)	(IN/LBS)
2b	06-82-1076	M4 x 16mm Pan Hd. Taptite T-20 Screw	Front Deck Baffle	14±1.5	12.15±1.3
2b	06-82-1076	M4 x 16mm Pan Hd. Taptite T-20 Screw	Wire Cover	14±1.5	12.15±1.3
2b	06-82-1076	M4 x 16mm Pan Hd. Taptite T-20 Screw	Power Head Housing	14±1.5	12.15±1.3
2b	06-82-1076	M4 x 16mm Pan Hd. Taptite T-20 Screw	Battery Interface - Left, Left & Middle	14±1.5	12.15±1.3
2b	06-82-1076	M4 x 16mm Pan Hd. Taptite T-20 Screw	Cord Clamp	14±1.5	12.15±1.3
2b	06-82-1076	M4 x 16mm Pan Hd. Taptite T-20 Screw	Blade Mower Housing	14±1.5	12.15±1.3
2c	06-82-1076	M4 x 16mm Pan Hd. Taptite T-20 Screw	Boat Securing Bracket	14±1.5	12.15±1.3
2c	06-82-1076	M4 x 16mm Pan Hd. Taptite T-20 Screw	Battery Interface - Left and Right	14±1.5	12.15±1.3
16	06-82-0276	M3 Pan Washer Hd. ST Phillips Screw	Fuel Gauge PCBA	4.0±1	3.47±0.86
18	05-81-1195	M3 x 8mm Pan Hd. SP T-10 Screw	Light Head Assembly	4.0±1	3.47±0.86
18	05-81-1195	M3 x 8mm Pan Hd. SP T-10 Screw	Hinge Containment Tab	3.0±.5	2.60±0.43
21c	05-81-0005	M3 x 11mm Pan Hd. Taptite T-10 Screw	Sidelight Assembly - Left and Right	5.0±1	4.33±0.86
27	05-71-0017	M4 x 10mm Pan Hd. ST T-20 Screw	Main PCBA	7.0±1	6.07±0.86
27	05-71-0017	M4 x 10mm Pan Hd. ST T-20 Screw	Back Mower Housing	14±1.5	12.15±1.3
29	05-88-1100	M3 x 10mm Pan Washer Hd. ST T-10 Sc.	Wire Clip	3.5±1	3.03±0.86
31	05-55-0022	M5 Hex Nut with Nylon Insert	Sidelight Housing - Left and Right	18±2	15.62±1.7
35b	05-74-0241	M8 x 16mm Pan Hd. T-40 Mach. Screw	Rear Handlebar Mounting Bracket - L & R	165±15	143±13.0
35b	05-74-0241	M8 x 16mm Pan Hd. T-40 Mach. Screw	Rear Wheel Drive Hub	165±15	143±13.0
38	05-74-0246	M6 x 16mm Pan Hd. T-30 Mach. Screw	Rear Guard and Mower Deck	30±3	26.03±2.6
41	05-78-0032	M5 x 13mm Pan Hd. T-25 Mach. Screw	Mower Deck	23±3	19.96±2.6
46	05-74-0242	M6 x 25mm Pan Hd. T-30 Mach. Screw	Blade Mower Housing	30±3	26.03±2.6
48	05-55-0158	M10 Hex Nut with Nylon Insert	Front Axle Weldment	180±10	156.2±8.67
48	05-55-0158	M10 Hex Nut with Nylon Insert	Rear Axle Weldment	180±10	156.2±8.67
52	05-74-0243	M5 x 44mm TH T-25 Machine Screw	Front Axle Mount Plate	18±2	15.62±1.7
*59	44-40-0027	<b>Blade Flange Nut</b>	<b>Shear Plate/Blade Washer/Mower Blade</b>	<b>380±20</b>	<b>329±17</b>
64a	05-78-5311	M5 x 18mm Pan Hd. Plast. T-20 Screw	Wheel Gear	16±1.5	13.88±1.3
67	05-81-0266	M4 x 8mm Pan Hd. T-20 Mach. Screw	Rear Wheel Gear Cover	10±1	8.67±0.86
110	05-74-0244	M8 x 20mm BUWH Hex Recess Mach. Sc.	Rear Handlebar Mounting Bracket - L & R	35±3.5	30.37±3.0
110b	05-74-0244	M8 x 20mm BUWH Hex Recess Screw	Rear Discharge Baffle	35±3.5	30.37±3.0
110b	05-74-0244	M8 x 20mm BUWH Hex Recess Screw	Mower Deck	165±15	143±13.0
139	05-74-0245	M6 x 10mm Pan Hd. Hex Recess Mach.	Rear Discharge Baffle	30±3	26.03±2.6
141	05-81-1030	M4 Hex Screw	Wire Clip	10±1	8.67±0.86

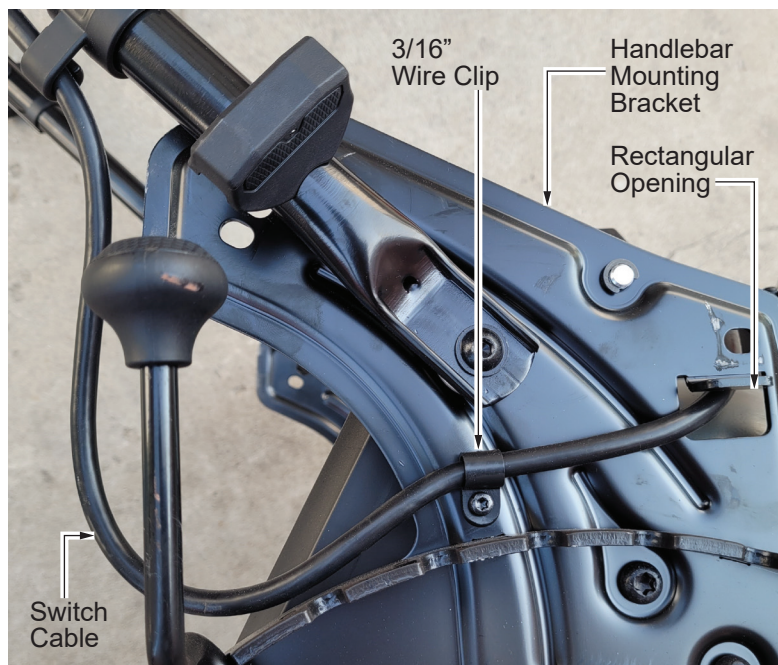
\*Indicates Critical Torque



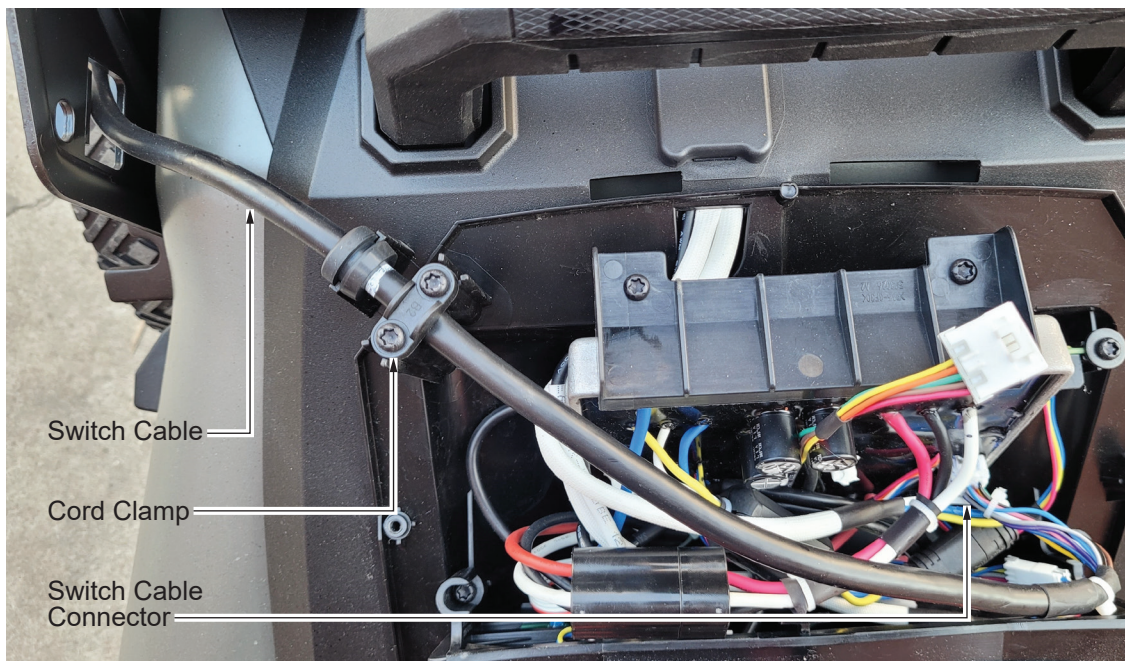
## Wire Routing for Switch Cable



Secure the Switch Cable with three Cable Clips, as shown.



Secure the Switch Cable with Wire Clip as shown. Route Switch Cable through the rectangular opening of the Handlebar Mounting Bracket.



Plug the connector of the Switch Cable into connector from the Main PCBA. Secure Switch Cable with a Cord Clamp and two screws.