



SERVICE PARTS LIST

BULLETIN NO.
54-05-0060

SPECIFY CATALOG NO. AND SERIAL NO. WHEN ORDERING PARTS		REVISED BULLETIN	DATE
M18™ DRUM MACHINE for 3/8"-1/2" Cables			Dec. 2022
CATALOG NO. 2817-20	STARTING SERIAL NO. M58A	WIRING INSTRUCTION SEE PAGE 3	

SwiThPack™ Cable Drive
System No. 47-53-2816
Reference Service
Bulletin 54-05-0005

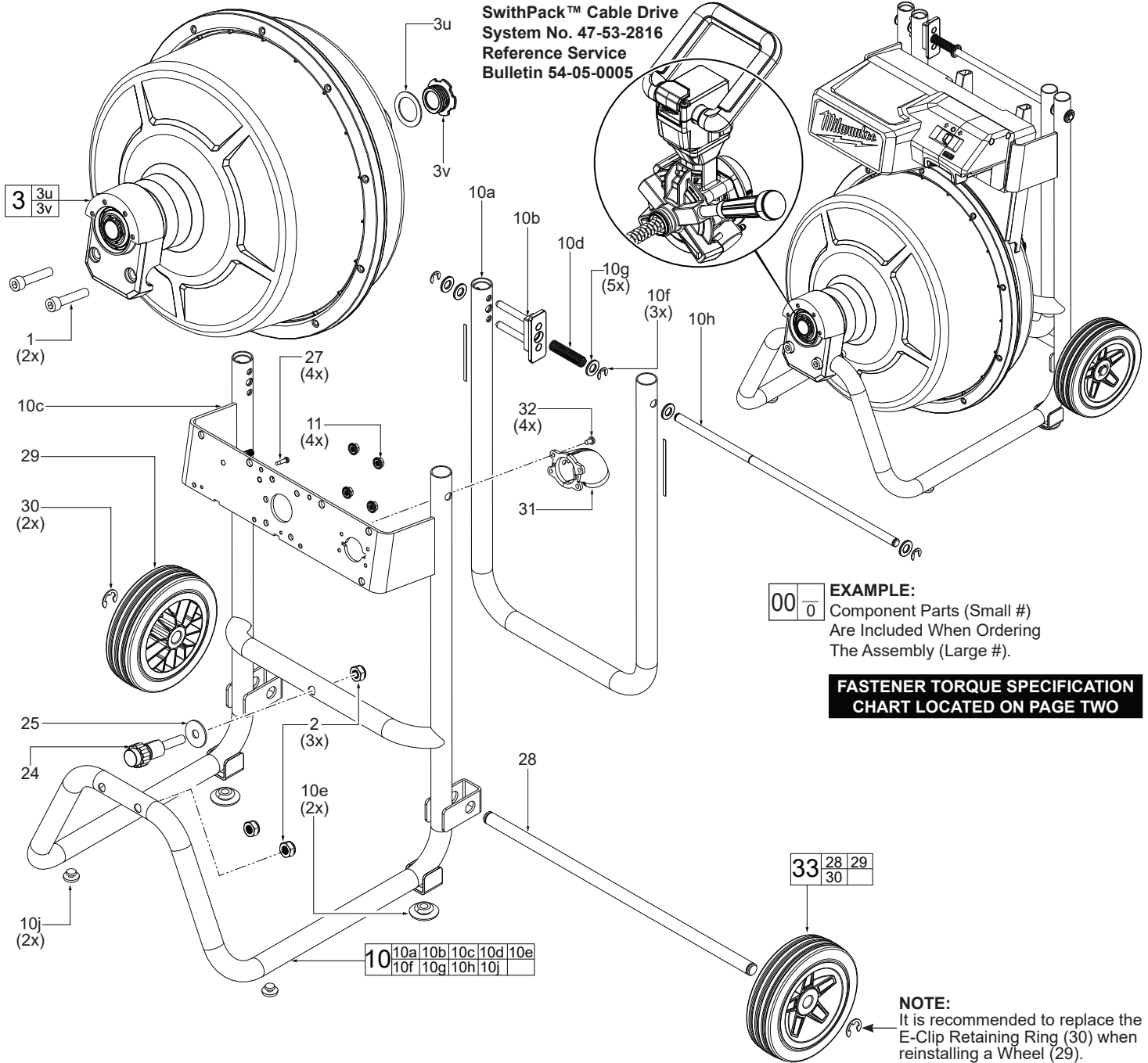
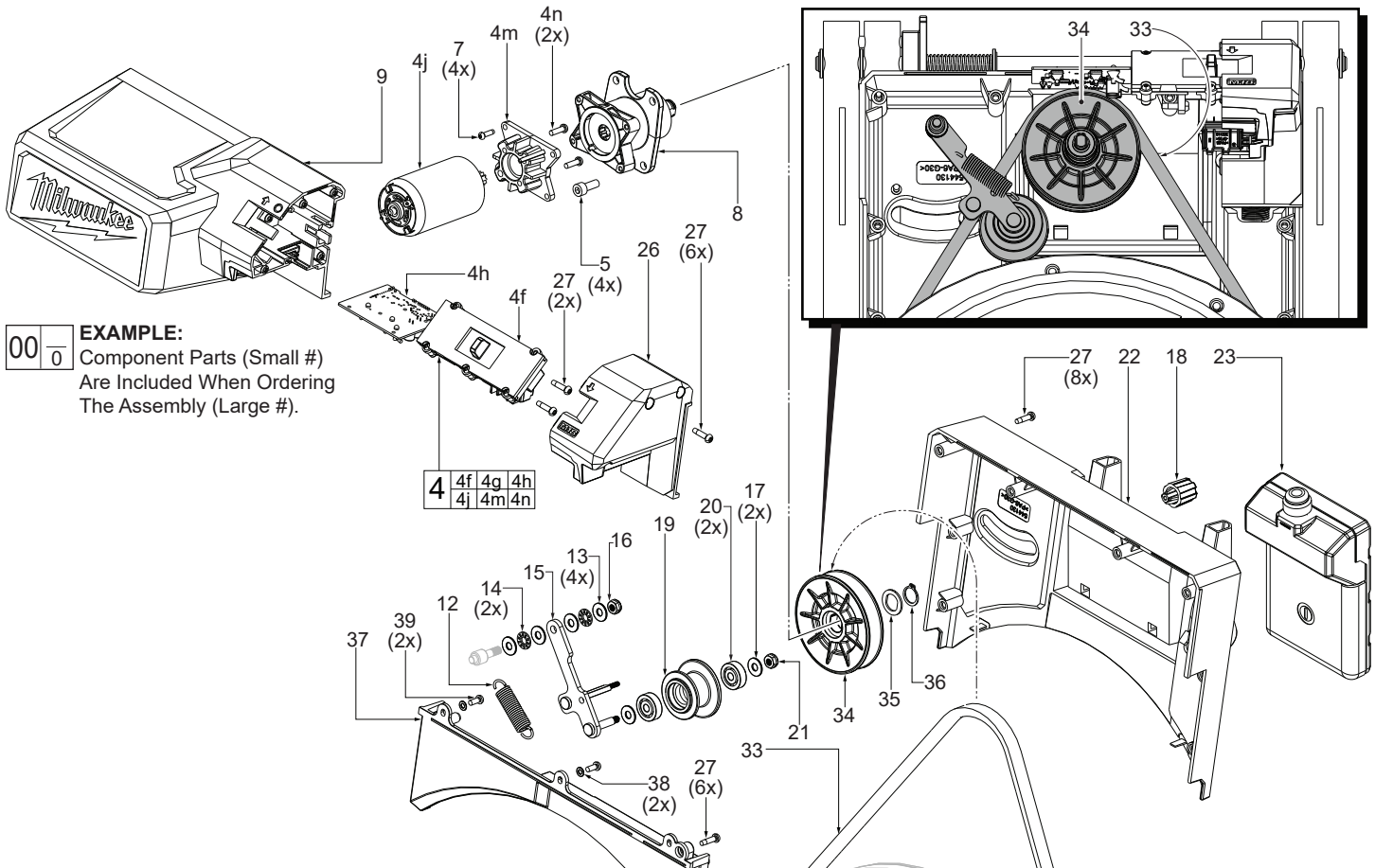


FIG.	PART NO.	DESCRIPTION OF PART	NO. REQ.
1	05-81-1097	M10 x 50mm Cap Hd. Hex Recess	(2)
2	05-55-0158	M10 x 10mm Hex Nut	(3)
3	42-36-0142	Drum Assembly	(1)
3u	45-06-0072	Drum Plug Seal	(1)
3v	31-15-0296	Drum Plug	(1)
10	43-40-0048	Frame Assembly	(1)
10a	31-86-0017	Upper Frame Handle	(1)
10b	31-44-0313	Handle Lock Block	(1)
10c	43-40-0056	Lower Frame	(1)
10d	40-50-0284	Lock Spring	(1)
10e	44-34-0067	Large Rubber Foot	(2)
10f	34-60-0127	E-Clip Retaining Ring	(3)
10g	45-88-0159	Flat Washer	(5)
10h	44-94-0053	Pivot Rod	(1)
10j	44-34-0068	Small Rubber Foot	(2)

FIG.	PART NO.	DESCRIPTION OF PART	NO. REQ.
11	06-57-0012	M6 Serrated Flange Lock Nut	(4)
24	36-90-0035	Drum Shaft	(1)
25	45-88-0268	Flat Washer	(1)
27	06-82-4003	M4 x 16mm Pan Hd. ST T-20 Screw	(4)
28	23-16-0022	Wheel Shaft	(1)
29	45-94-0033	Wheel	(2)
30	44-90-0206	E-Clip Retaining Ring	(2)
31	22-56-0055	Connector Housing Combination	(1)
32	05-81-1099	M5 x 8mm Pan Hd. T-25 Mach. Screw	(4)
33	45-94-0041	Wheel Service Kit	(1)
50	12-20-0349	Service Nameplate (Not Shown)	(1)



EXAMPLE:
 00 0 Component Parts (Small #)
 Are Included When Ordering
 The Assembly (Large #).

4	4f	4g	4h
	4j	4m	4n

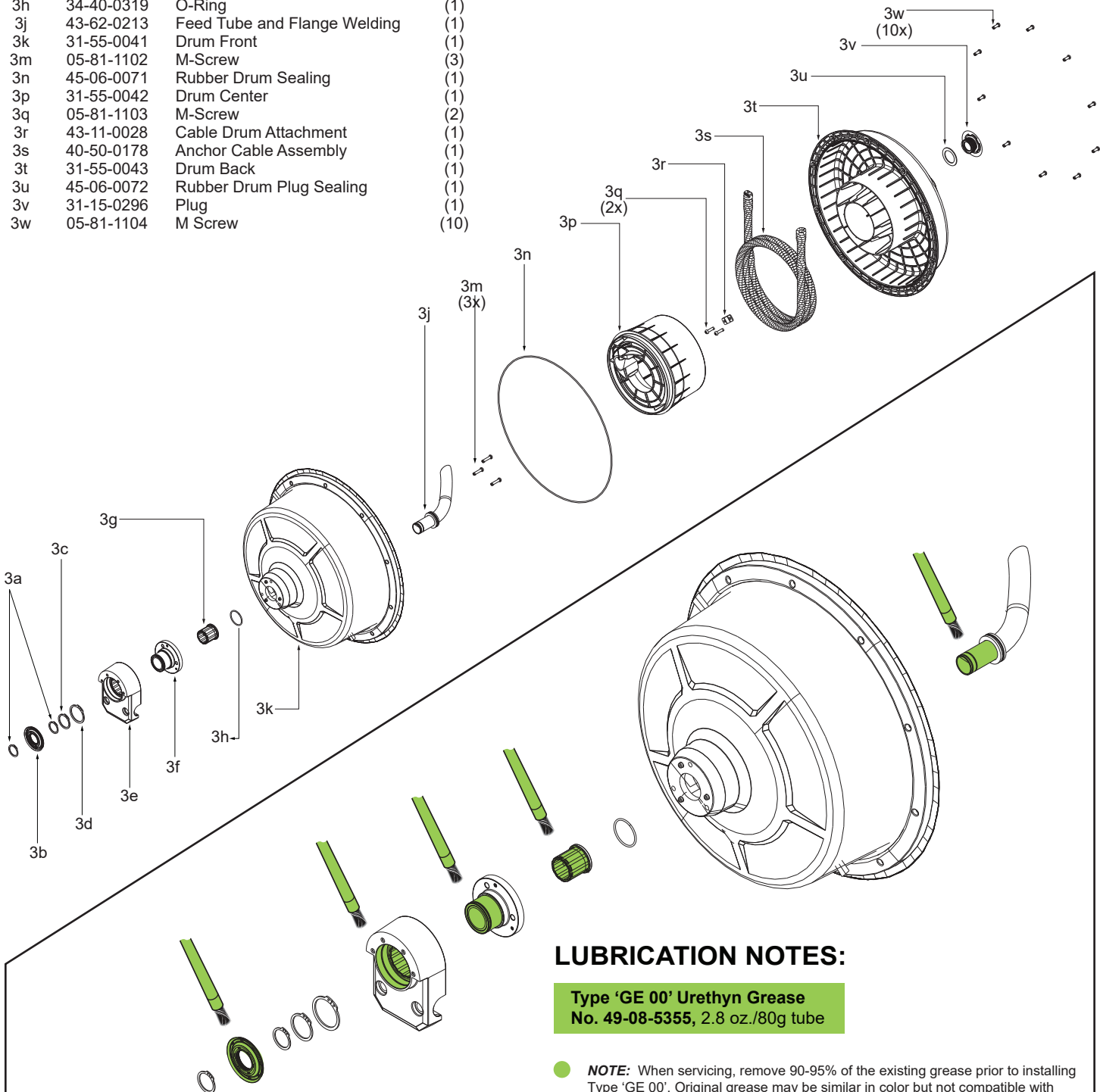
FIG.	PART NO.	DESCRIPTION OF PART	NO. REQ.
4	14-30-0128	Motor/Electronics Assembly	(1)
4f	-----	Switch Hall Board Assembly	(1)
4h	-----	PCB Assembly	(1)
4j	-----	Motor Assembly	(1)
4m	-----	Motor Mount	(1)
4n	-----	M4 x 14mm Pan Hd. T-20 Mach. Screw	(2)
5	05-81-1098	M6 x 16mm Cap Hd. Hex Recess Scr.	(4)
7	05-78-0106	M3.5 x 12.5mm Pan Hd. Tapt. T-10 Scr.	(4)
8	14-29-0107	Gearbox Assembly	(1)
9	28-50-0032	Front Housing - Left	(1)
12	40-50-0248	Tensioner Spring	(1)
13	45-88-0266	Flat Head Washer	(4)
14	02-50-0031	Thrust Needle Bearing	(2)
15	42-05-0013	Tensioner Arm	(1)
16	05-55-0156	M6 Hex Nut with Nylon Insert	(1)
17	45-88-0267	Flat Washer	(2)
18	43-98-0117	Manual Crank Knob	(1)
19	42-36-0084	Tensioner Pulley	(1)
20	02-02-0128	Ball Bearing	(2)
21	05-55-0157	M5 Hex Nut with Nylon Insert	(1)
22	31-17-0025	Cord Wrap	(1)
23	14-02-0012	Foot Pedal Assembly	(1)
26	31-17-0025	Front Housing - Right	(1)
27	05-74-0413	M4 x 16mm Pan Hd. ST T-20 Screw	(22)
33	40-50-0294	Single V Drive Belt - Type A51	(1)
34	44-77-0028	Driver Pulley	(1)

FIG.	PART NO.	DESCRIPTION OF PART	NO. REQ.
35	45-88-0269	Flat Washer	(1)
36	34-80-0026	Retaining Ring	(1)
37	42-92-0101	Belt Cover	(1)
38	05-74-0133	Flat Washer	(2)
39	05-81-1101	M4 x 10mm Pan Hd. T-20 Mach. Scr.	(2)

SCREW TORQUE SPECIFICATIONS

FIG.	PART NO.	DESCRIPTION OF FASTENER	WHERE USED	SEAT TORQUE	
				(kgf-cm)	(lb-in)
1	05-81-1097	M10 x 50mm Cap Hd. Hex Recess	Pillow Block to Frame	70-75	60.7-65.1
2	05-55-0158	M10 x 10mm Hex Nut	Pillow Block to Frame & Drum Shaft	70-75	60.7-65.1
4n	-----	M4 x 14mm Pan Hd. T-20 Mach. Screw	Motor Mount to Motor	10-12	8.6-10.4
5	45-04-1090	M6 x 16mm Cap Hd. Hex Recess Scr.	Gearbox Assembly to Frame	55-60	47-7-52.0
7	05-78-0106	M3.5 x 12.5mm Pan Hd. Tapt. T-10 Scr.	Motor Mount to Gearbox	8-9	6.9-7.8
11	06-57-0012	M6 Serrated Flange Lock Nut	Gearbox Assembly to Frame	N/A	N/A
16	05-55-0156	M6 Hex Nut with Nylon Insert	To welded stud on Lower Frame	13-15	11.2-13.0
21	05-55-0157	M5 Hex Nut with Nylon Insert	To welded stud on Tensioner Arm	13-15	11.2-13.0
27	06-82-4003	M4 x 16mm Pan Hd. ST T-20 Screw	All Locations	10-12	8.6-10.4
32	05-78-0029	M5 x 8mm Pan Hd. T-25 Mach. Screw	Connector Housing to Frame	13-15	11.2-13.0
39	05-81-1101	M4 x 10mm Pan Hd. T-20 Mach. Scr.	Belt Cover to Frame	10-12	8.6-10.4

FIG.	PART NO.	DESCRIPTION OF PART	NO. REQ.
3a	34-60-0112	Retaining Ring	(2)
3b	43-40-0202	Rubber Sealing for Feed Tube	(1)
3c	34-60-0113	Retaining Ring for Feed Tube	(1)
3d	34-60-0114	Retaining Ring for Front Mount	(1)
3e	43-56-0026	Front Pillow Block	(1)
3f	31-10-0122	Front Mount for Feed Tube	(1)
3g	42-40-0153	Feed Tube Bushing	(1)
3h	34-40-0319	O-Ring	(1)
3j	43-62-0213	Feed Tube and Flange Welding	(1)
3k	31-55-0041	Drum Front	(1)
3m	05-81-1102	M-Screw	(3)
3n	45-06-0071	Rubber Drum Sealing	(1)
3p	31-55-0042	Drum Center	(1)
3q	05-81-1103	M-Screw	(2)
3r	43-11-0028	Cable Drum Attachment	(1)
3s	40-50-0178	Anchor Cable Assembly	(1)
3t	31-55-0043	Drum Back	(1)
3u	45-06-0072	Rubber Drum Plug Sealing	(1)
3v	31-15-0296	Plug	(1)
3w	05-81-1104	M Screw	(10)



LUBRICATION NOTES:

Type 'GE 00' Urethyn Grease
No. 49-08-5355, 2.8 oz./80g tube

- NOTE:** When servicing, remove 90-95% of the existing grease prior to installing Type 'GE 00'. Original grease may be similar in color but not compatible with 'GE 00'. Prior to reinstalling, clean gear assemblies with a clean, dry cloth. Lightly coat all individual parts highlighted here with grease. Apply a greater amount of grease to all internal and external gear teeth.
- Prior to reinstalling, clean gear assemblies with a clean, dry cloth. Lightly coat all parts highlighted here with 'GE 00' grease. Apply a greater amount of grease to all internal and external gear teeth.
- Lightly coat all parts highlighted here with 'GE 00' grease unless directed otherwise.