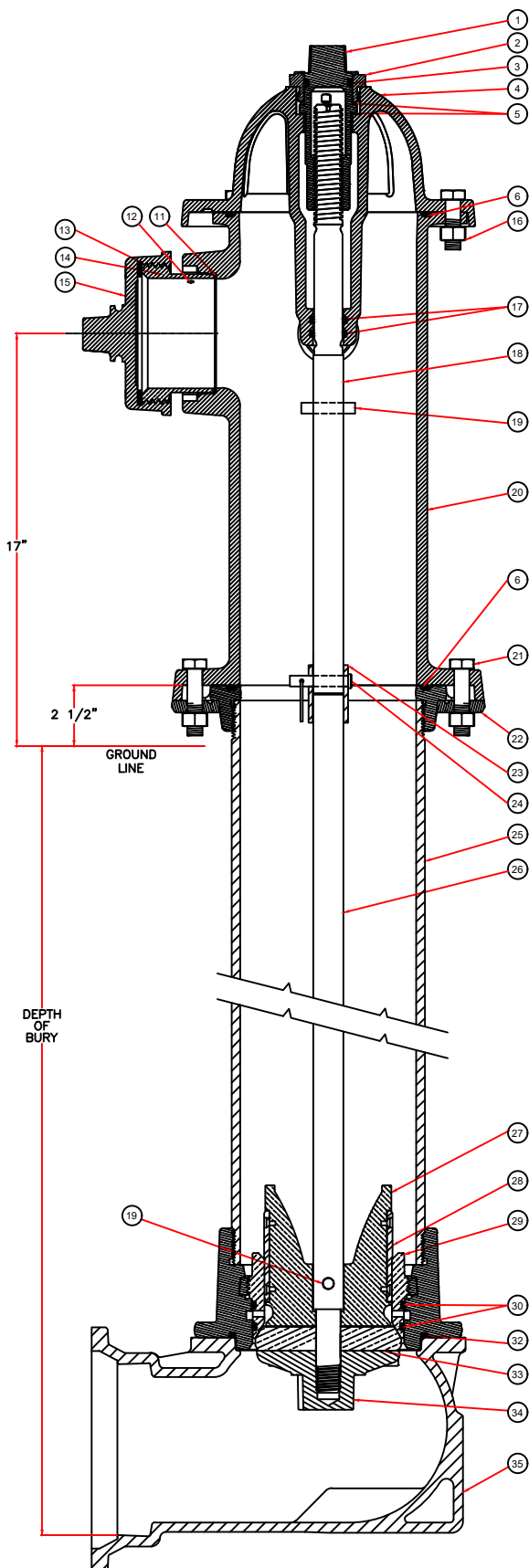


WaterMaster® 5CD250 Fire Hydrant 6" MJ Shoe



Product

WaterMaster® 5CD250 Fire Hydrant

Design Features

1. RATED WORKING PRESSURE = 250 PSI.
2. MEETS ANSI/AWWA C502.
3. UL LISTED/FM APPROVED.

Components

CAT NO.	PARTS LIST	MATERIAL
1	OPERATING NUT	BRONZE
2	HOLD DOWN NUT	BRONZE
3	WEATHER SEAL "O" RING	BUNA-N
4	TOP BONNET	D.I.
5	THRUST WASHER	DELTRIN
6	QUAD RINGS*	BUNA-N
7	HOSE NOZZLE "O" RING **	BUNA-N
8	HOSE NOZZLE **	BRONZE
9	HOSE NOZZLE GASKET **	RUBBER
10	HOSE NOZZLE CAPS **	C.I.
11	PUMPER NOZZLE "O" RING	BUNA-N
12	PIPE PLUG 1/4 NPTF SS HX	STN. STL
13	PUMPER NOZZLE GASKET	RUBBER
14	PUMPER NOZZLE	BRONZE
15	PUMPER NOZZLE CAP	C.I.
16	TOP BONNET BOLTS & NUTS	ZINC PL. GR. 8
17	RESERVOIR "O" RING	BUNA-N
18	OPERATING STEM TOP 24 1/4"	STEEL W/BRASS SLEEVE
19	DRIVE-LOC PIN	STN. STL
20	NOZZLE STANDPIPE	D.I.
21	SAFETY FLG. BOLTS & NUTS	ZINC PL. GR. 8
22	SWIVEL FLANGES (FRANGIBLE)	C.I.
23	STEM COUPLING (FRANGIBLE)	GALV. STL
24	COUPLING PIN & RING COTTER	STN. STL
25	STANDPIPE LOWER SECTION	D.I. W/BRONZE INSERT
26	OPERATING STEM LOWER	STEEL
27	HIGH PRESSURE DRIP SHUTOFF	BRONZE
28	INSERTS	HDPE
29	VALVE SEAT	BRONZE
30	VALVE SEAT "O" RING	BUNA-N
31	BRASS DRAIN HOLE BUSHING **	BRASS
32	INLET FLANGE "O" RING	BUNA-N
33	SEATING VALVE RUBBER	RUBBER
34	VALVE WASHER	D.I./EPOXY
35	BOTTOM INLET	D.I./EPOXY
36	INLET FLG. BOLTS & NUTS **	STN. STL. 18-8
37	CHAINS **	ZN. PL. STL
38	SET SCREW (1/4 - 20 SS CONE PT) **	STN. STL
39	INSERT SCREWS **	STN. STL

* NOT A REPLACEMENT PART

** NOT SHOWN

Drawing Revision

Designer: MWP 08/25/20

Revised By: MCA 08/02/23

Disclaimer

Weights (lbs./kg) dimensions (inches/mm) and drawings provided for your guidance. We reserve the right to modify specifications without prior notice.

CONFIDENTIAL: This drawing is the property of EJ GROUP, Inc., and embodies confidential information, registered marks, patents, trade secret information, and/or know how that is the property of EJ GROUP, Inc. Copyright © 2023 EJ GROUP, Inc. All rights reserved.

Contact

800 626 4653

ejco.com