



## LIGHT SERVICE COMMERCIAL ELECTRIC REPLACEMENT PARTS LIST

# Light Service Energy Saver SLE Models



### Models Covered:

SLE2(65,80,120)T\*

(\* ) Denotes Warranty Years

Includes Hydrojet®  
Total Performance System

**Effective: March, 2022**  
**ECO 8514**

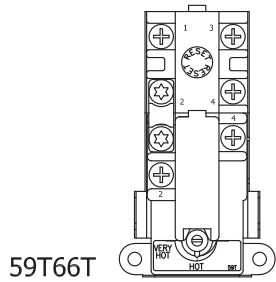
NOTE: BOTH MODEL AND SERIAL  
NUMBERS ARE REQUIRED FOR  
ORDERING REPLACEMENT PARTS

Dimensions and specifications  
subject to change without notice.

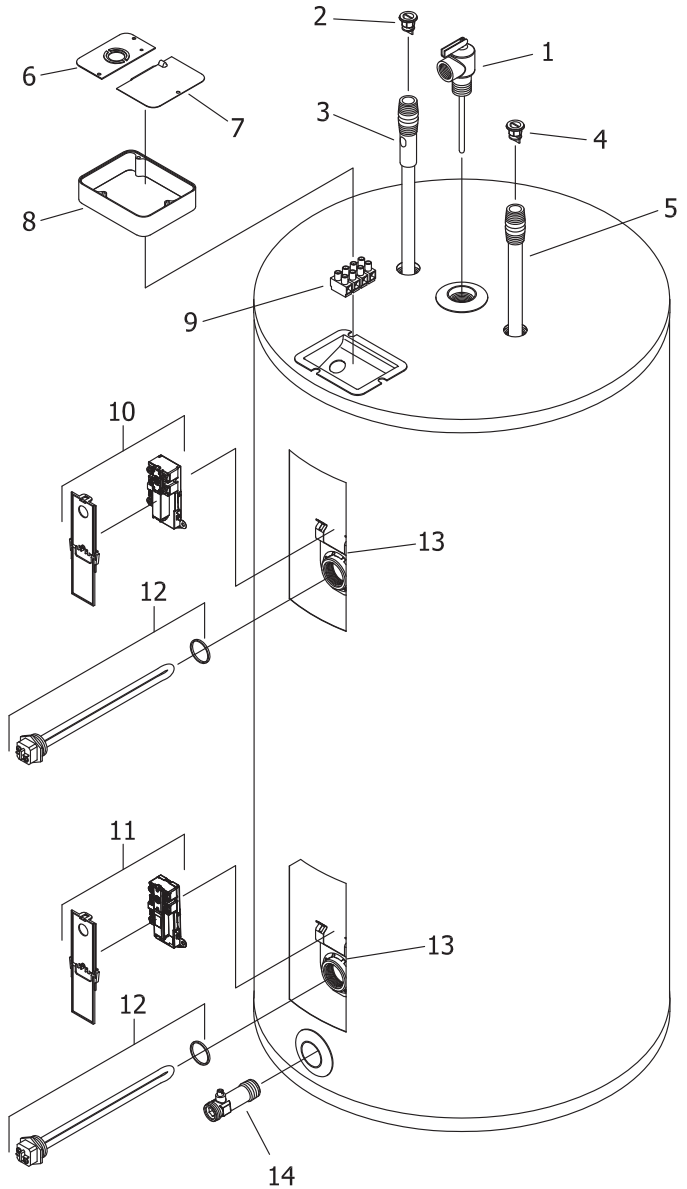
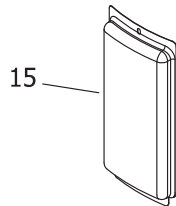
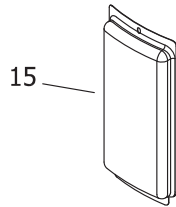
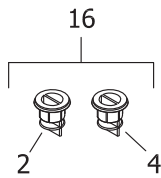
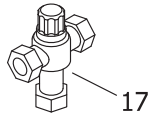
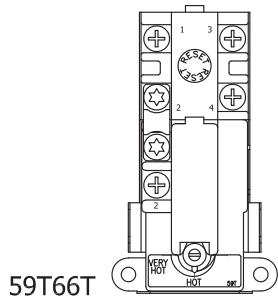


As required by the state of California Proposition 65.

**TOP LOCATION**  
 ● Double element water heater.



**BOTTOM LOCATION**  
 ● Single element water heater.  
 ● Double element water heater.



Item	Description	Model SLE265T	Model SLE280T	Model SLE2120T
1	T&P Relief Valve	230-40594-02	230-40594-02	230-40594-02
2	Heat Trap Insert (Outlet)	239-45167-00	239-45167-00	239-45167-00
3	Hot Water Outlet Anode Magnesium ♦ #	224-47776-19	224-47776-27	224-47780-01
	Aluminum ♦ #	224-32999-28	224-32999-28	224-45036-01
	A420 (Aluminum)#	224-49560-08	224-49560-08	---
4	Heat Trap Insert (Inlet)	239-51556-00	239-51556-00	239-51556-00
5	Cold Water Inlet Tube PEX ♦♦	229-51230-22	229-51230-33	---
	Cold Water Inlet Tube Polysulfone ♦♦	---	---	229-45032-01
6	Cover Conduit/Ground	243-39451-00	243-39451-00	243-39451-00
7	Cover Junction Box	243-39452-00	243-39452-00	243-39452-00
8	Junction Box Extender	239-40587-00	239-40587-00	239-40587-00
9	Terminal Block (4 pole)	243-49908-00	243-49908-00	243-49908-00
10	Upper and Lower Thermostat (59T66T) & Protector ▲ Φ	415-51046-00	415-51046-00	415-51046-00
11	Lower Thermostat (59T66T) & Protector ▲ Φ	415-50691-00	415-50691-00	415-50691-00
12	Heating Element 277V 6100W with Gasket*	415-42547-16	415-42547-16	415-42547-16
13	Thermostat Mounting Bracket	415-50689-00	415-50689-00	415-50689-00
14	Brass Drain Valve	265-42351-02	265-42351-02	265-42351-02
15	Access Cover	243-36618-02	243-36618-02	243-36618-02
16	Heat Trap Insert Kit (PEX)	265-51572-00	265-51572-00	265-51572-00
17	ASSE Approved Mixing Valve	239-51778-00	239-51778-00	239-51778-00

- ♦ Order with item 2.
- ♦♦ Order with item 4.
- ▲ Thermostat protector provided in kit with thermostat.
- Φ Mounting bracket (Item #13) not provided in kit with thermostat.
- # Anode may need to be cut to length, please see page 5 for reference chart of anode length by model.

**Reference Chart of Anode Length by Model**

Model	AOD Anode Cut (End to end)	
	Inches	Millimeters
SLE265T	51.13	1303
SLE280T	51.13	1303
SLE2120T	50.81	1291



## United States

---

**Sales** 800-523-2931

**Technical Support** 800-334-3393

**Email** [techserv@bradfordwhite.com](mailto:techserv@bradfordwhite.com)

**Warranty** 800-531-2111

**Email** [warranty@bradfordwhite.com](mailto:warranty@bradfordwhite.com)

**Service Parts** 800-538-2020

**Email** [parts@bradfordwhite.com](mailto:parts@bradfordwhite.com)

## Canada

---

**Sales & Technical Support** 866-690-0961 905-203-0600

**Fax** 905-636-0666

**Warranty** [bwccwarranty@bradfordwhite.com](mailto:bwccwarranty@bradfordwhite.com)

**Technical Support** [bwccotech@bradfordwhite.com](mailto:bwccotech@bradfordwhite.com)

**Service Parts** [orders@bradfordwhitecanada.com](mailto:orders@bradfordwhitecanada.com)

**Orders** [ca.orders@bradfordwhite.com](mailto:ca.orders@bradfordwhite.com)

For U.S. and Canada field service,  
contact your professional installer or  
local Bradford White sales representative.

## International

---

**General Contact** [international@bradfordwhite.com](mailto:international@bradfordwhite.com)