



SERVICE PARTS LIST

BULLETIN NO.
54-27-2870

SPECIFY CATALOG NO. AND SERIAL NO. WHEN ORDERING PARTS		REVISED BULLETIN	DATE
M18™ FUEL™ 1-1/4" Compact Pipe Threader			May 2022
CATALOG NO. 2870-20	STARTING SERIAL NO. M71A	WIRING INSTRUCTION See Page 4	

EXAMPLE:
Component Parts (Small #)
Are Included When Ordering
The Assembly (Large #).

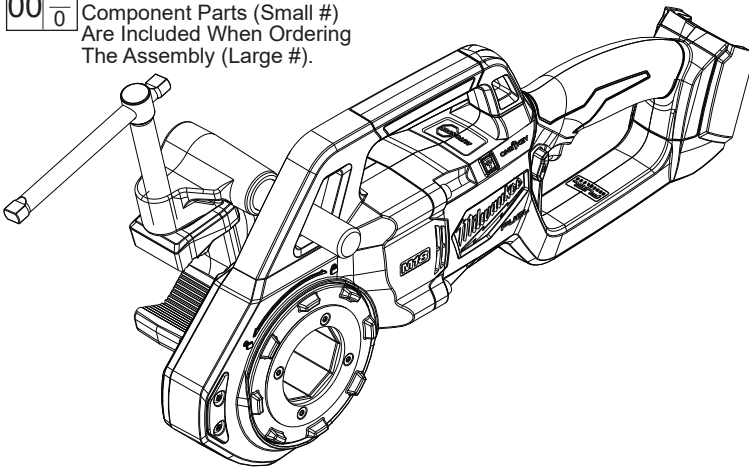
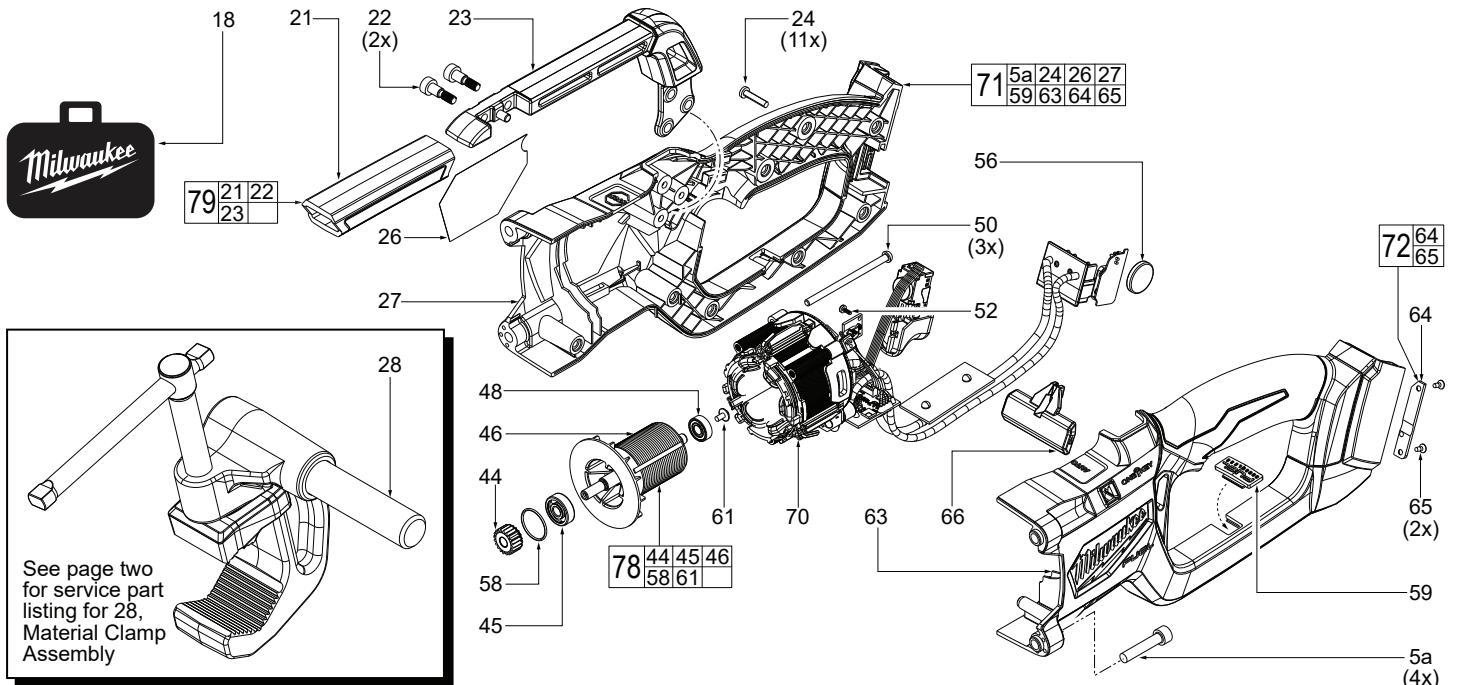


FIG.	PART NO.	DESCRIPTION OF PART	NO. REQ.
23	-----	Upper Handle with Dowel Pin	(1)
24	06-82-7261	6-19 x 11/16" Pan Hd. Tapt. T-15 Screw	(11)
26	12-20-0457	Service Nameplate	(1)
27	-----	Right Handle Housing Halve-Cover	(1)
28	28-10-0102	Material Clamp Assembly	(1)
44	-----	Motor Pinion	(1)
45	-----	Ball Bearing	(1)
46	-----	Motor Armature	(1)
50	05-74-0193	M4 x 67mm Pan Hd. T-20 Mach. Screw	(3)
52	05-88-0106	M2.0 x 5.5mm Pan Hd. T-8 PT Screw	(1)
56	-----	3V Coin Cell Battery (CR2032)	(1)
58	-----	O-Ring	(1)
59	43-84-0033	FUEL Badge	(1)
61	-----	M3 x 6mm Phillips Screw	(1)
63	-----	Left Handle Housing Halve-Support w/ Lens	(1)
64	-----	Coin Cell Cover	(1)
65	05-81-1100	M2.6 x 6mm Flat Hd. ST Phillips Screw	(2)
66	23-66-0281	Switch Lever	(1)
70	31-06-0028	Electronic Assembly	(1)
71	31-44-0273	Handle Housing Service Kit	(1)
72	31-15-0281	Coin Cell Door Service Kit	(1)
78	16-01-0092	Armature Service Kit	(1)
79	31-44-0278	Upper Handle Service Kit	(1)

FIG.	PART NO.	DESCRIPTION OF PART	NO. REQ.
5a	05-74-0026	M6 x 30mm Cap Hd. Hex Recess Mach. Scr. (4)	(4)
18	42-55-0176	Blow Molded Carrying Case	(1)
21	-----	Rubber Upper Handle Grip	(1)
22	05-74-0416	M5 x 19mm Cap Hd. T-25 Shoulder Screw	(2)



See page two for service part listing for 28, Material Clamp Assembly

SCREW TORQUE SPECIFICATIONS

FIG.	PART NO.	DESCRIPTION OF FASTENER	WHERE USED	SEAT TORQUE	
				(KGF/CM)	(IN/LBS)
1	05-74-0234	M4 x 12mm Flat Hd. T-20 Mach. Screw	Worm Gearcase/Retaining Plate	20±3	17±2
4	05-89-0056	10-32 UNF Pan Hd. Phillips Shoulder Screw	Palm Handle/Gearcase Cover & Support	18±3	15±2
5a	05-74-0414	M6 x 30mm Cap Hd. Hex Recess Mach. Scr.	Handle Hsg./ Gearcase Cover & Support	45±6	39±5
5b	05-74-0414	M6 x 30mm Cap Hd. Hex Recess Mach. Scr.	Handle Hsg./ Gearcase Cover & Support	38±	33±4
19	05-74-0415	M5 x 24mm Pan Hd. T-25 Mach. Screw	Worm Gearcase Cover & Support	33±5	29±4
22	05-74-0416	M5 x 19mm Cap Hd. T-25 Shoulder Screw	Upper Handle	34±5	29±4
24	06-82-7261	6-19 x 11/16" Pan Hd. Tapt. T-15 Screw	Right Handle Housing Halve-Cover	16±3	14±2
43	05-74-0235	M4 x 12mm Pan Hd. T-20 Mach. Screw	Planetary Carrier	18±3	15±2
50	05-74-0236	M4 x 67mm Pan Hd. T-20 Mach. Screw	Planetary Carrier	17±2	14.7±2
52	05-88-0106	M2.0 x 5.5mm Pan Hd. T-8 PT Screw	Electronics/Left Handle Housing Halve	2.0±0.5	0.17±0.25
61	-----	M3 x 6mm Phillips Screw	Ball Bearing/ Armature	12±1	10.4±1
65	05-74-0418	M2.0 x 5.5mm Pan Hd. T-8 PT Screw	Coin Cell Door	3.0±0.5	2.6±0.25

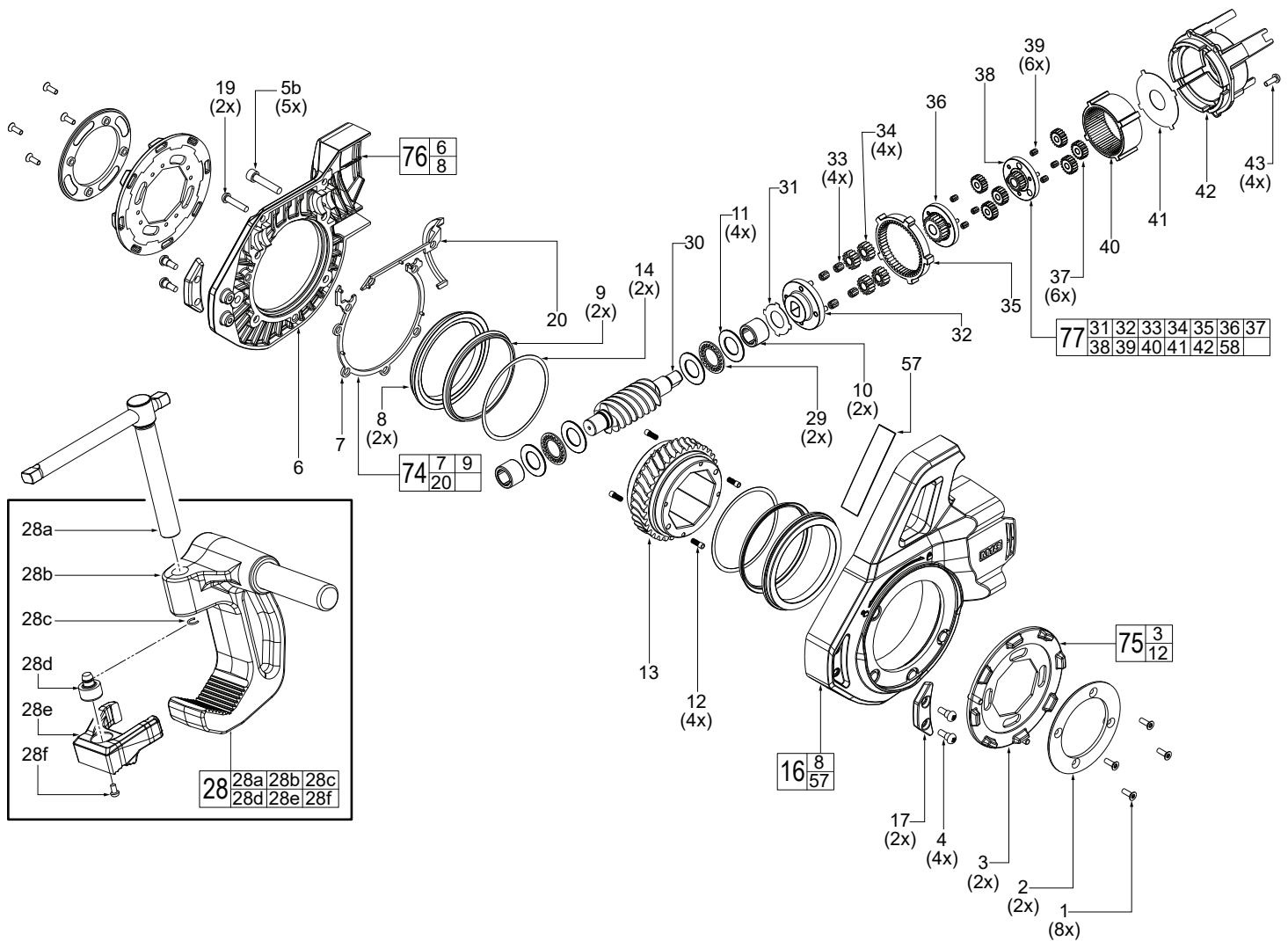

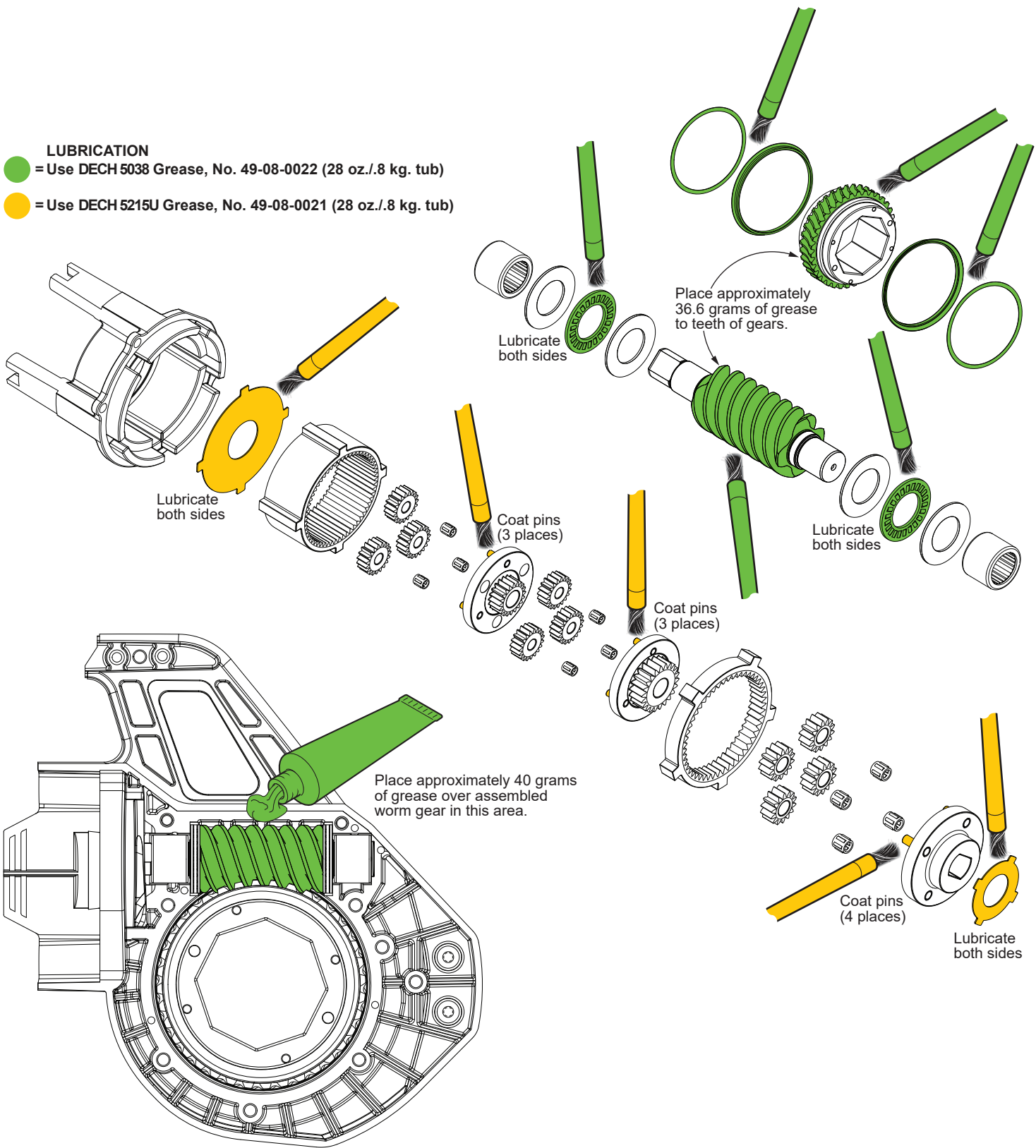


FIG.	PART NO.	DESCRIPTION OF PART	NO. REQ.	FIG.	PART NO.	DESCRIPTION OF PART	NO. REQ.
1	05-78-0013	M4 x 12mm Flat Hd. T-20 Mach. Screw	(8)	38	-----	2nd Sun Gear	(1)
2	44-66-0221	Retaining Plate	(2)	39	-----	Needle Bearing	(6)
3	-----	Die Lock Ring	(2)	40	-----	1st and 2nd Ring Gear	(1)
4	05-78-0023	10-32 UNF Pan Hd. Shoulder Screw	(4)	41	-----	External Tooth Flat Washer	(1)
5b	05-74-0026	M6 x 30mm Cap Hd. Hex Recess Mach. Scr.	(5)	42	-----	Planetary Carrier	(1)
6	-----	Worm Gearcase Cover	(1)	43	05-88-1206	M4 x 12mm Pan Hd. T-20 Mach. Screw	(4)
7	-----	Rubber Housing Gasket	(1)	57	10-20-3086	Warning Label	(1)
8	-----	Bushing with Recess	(2)	74	45-06-0112	Seal Service Kit	(1)
9	-----	Rubber V-Ring	(2)	75	44-90-0062	Lock Ring/Plunger Service Kit (Set of 1)	(2)
10	02-50-0028	Needle Bearing	(2)	76	28-20-0018	Worm Gearcase Cover /Bushing Svc. Kit	(1)
11	45-88-0118	Flat Washer	(4)	77	14-29-0116	Gear Service Kit	(1)
12	44-70-0037	Spring Plunger (Set of 4)	(1)				
13	32-75-0022	Worm Gear	(1)				
14	45-88-0258	Flat Washer	(2)				
16	28-14-0062	Worm Gearcase Support with Dowel Pins	(1)				
17	45-88-0099	Rubber Palm Handle	(1)				
19	06-82-3001	M5 x 24mm Pan Hd. T-25 Mach. Screw	(2)				
20	-----	Rubber Case Seal	(1)				
28	28-10-0102	Material Clamp Assembly	(1)				
28a	43-64-0021	Threaded Rod	(1)				
28b	42-30-0027	Material Clamp Body	(1)				
28c	34-60-0091	Retaining Ring	(1)				
28d	45-08-0071	Inserted Shaft	(1)				
28e	43-98-0038	Upper Jaw	(1)				
28f	05-81-0166	M4 x 7mm Pan Hd. T-20 Machine Screw	(1)				
29	02-50-0012	Needle Bearing	(2)				
30	32-60-0046	Worm Pinion	(1)				
31	-----	External Tooth Flat Washer	(2)				
32	-----	Carrier	(1)				
33	-----	Needle Bearing	(4)				
34	-----	3rd Planet Gear	(4)				
35	-----	3rd Ring Gear	(1)				
36	-----	3rd Sun Gear	(1)				
37	-----	1st and 2nd Planet Gear	(6)				

LUBRICATION

 = Use DECH 5038 Grease, No. 49-08-0022 (28 oz./1.8 kg. tub)

 = Use DECH 5215U Grease, No. 49-08-0021 (28 oz./1.8 kg. tub)

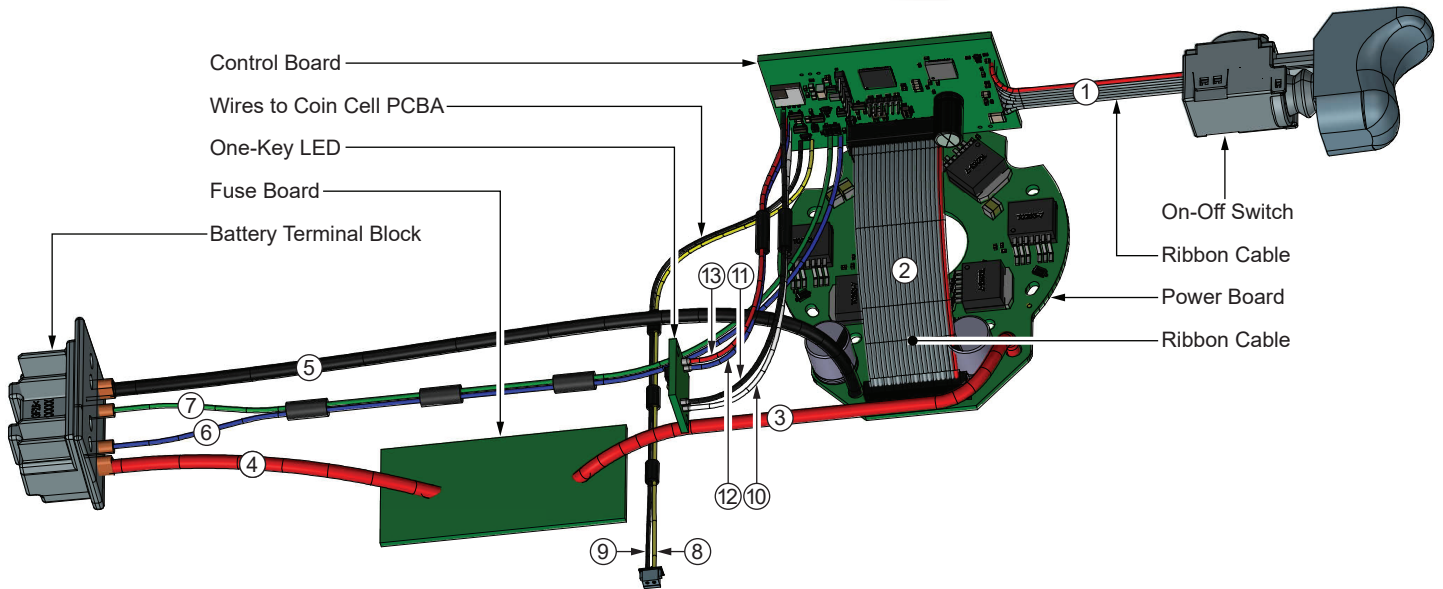
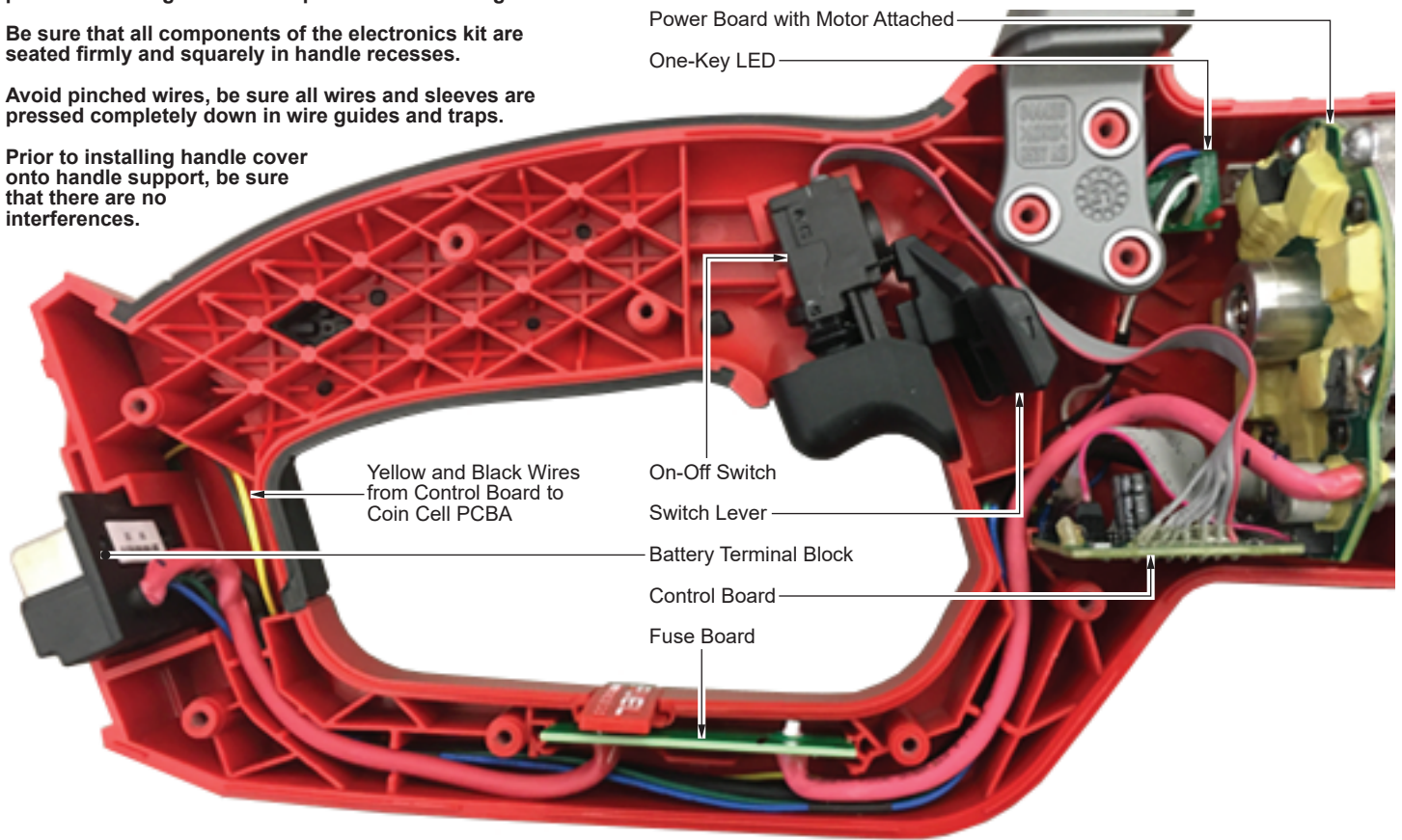


As an aid to reassembly, take notice of wire routing and position in wire guides and traps while dismantling tool.

Be sure that all components of the electronics kit are seated firmly and squarely in handle recesses.

Avoid pinched wires, be sure all wires and sleeves are pressed completely down in wire guides and traps.

Prior to installing handle cover onto handle support, be sure that there are no interferences.



WIRE SPECIFICATIONS

WIRE NO.	WIRE DESCRIPTION	WIRE COLOR	WIRE ROUTING	WIRE LENGTH	ASSY. SEQ.
1	7 Pin Ribbon Cable	Gray / Red	From Control Board to On-Off Switch	N/A	-----
2	20 Pin Ribbon Cable	Gray / Red	From Control Board to Power Board	N/A	-----
3	-----	Red	From Power Board to Fuse Board	N/A	-----
4	-----	Red	From Battery Terminal Block to Fuse Board	N/A	-----
5	-----	Black	From Battery Terminal Block to Power Board	N/A	-----
6	-----	Blue	From Battery Terminal Block to Control Board	N/A	-----
7	-----	Green	From Battery Terminal Block to Control Board	N/A	-----
8	-----	Yellow	From Control Board to Male Connector. To Coin Cell PCBA	N/A	-----
9	-----	Black	From Control Board to Male Connector. To Coin Cell PCBA	N/A	-----
10	-----	White	From Control Board to One-Key LED	N/A	-----
11	-----	Black	From Control Board to One-Key LED	N/A	-----
12	-----	Blue	From Control Board to One-Key LED	N/A	-----
13	-----	Red	From Control Board to One-Key LED	N/A	-----