

# F1960 Poly PEX Coupling

Job Name	_____
Location	_____
Engineer	_____
Contractor	_____
Tag	_____ PO# _____

## Specifications

Manufactured to the highest industry standards, Jones Stephens' F1960 cold expansion fittings provide precise, secure, and leak-free connections. Made with strong polymer material, F1960 cold expansion fittings are corrosion and chlorine/chemical resistant – making them a great fit for aggressive water environments. Approved for use with PEX-A piping. Can be used with F1960 PEX rings.

## Applications

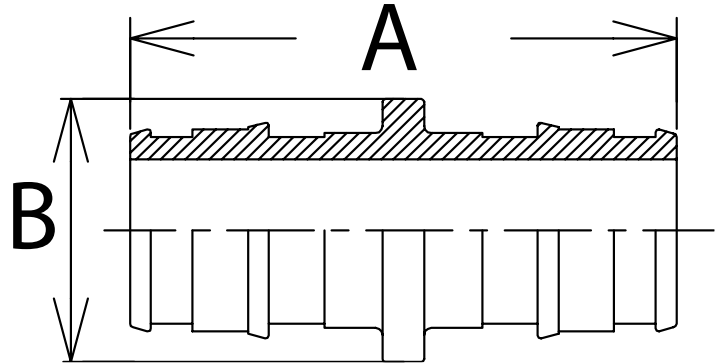
Jones Stephens' F1960 Poly PEX Couplings are approved for use with commercial and residential non-potable water applications.

## Materials

PPSU. Polymer construction. Manufactured of premium grade resin with non-mixed blends.

## Certifications/Listings/Approvals

- ASTM F1960-2018a
- ASTM F877-2020
- NSF/ANSI/CAN 61-2022
- NSF/ANSI 14-2016a
- NSF/ANSI/CAN 372-2022
- CSA B137.5-2020



	ID	OD
F1960 Specified Dimensions	in (mm)	in (mm)
1/2" End Connection	.40(10.20)	.61(15.59)
3/4" End Connection	.61(15.60)	.87(22.10)
1" End Connection	.82(20.80)	1.11(28.10)
1-1/4" End Connection	.97(24.64)	1.36(35.54)
1-1/2" End Connection	1.08(27.43)	1.49(37.85)
2" End Connection	1.48(37.59)	2.08(52.82)

**PRODUCT OFFERING ON PAGE 2**

**Dimensions and Product Offering**

PART NO.	SIZE	A - IN (MM)	A TOLERANCE ±IN(MM)	B - IN (MM)	B TOLERANCE ±IN(MM)	WEIGHT - LBS (G)	WEIGHT TOLERANCE ±LBS (G)
<b>F76754</b>	0.50"	1.54 (39.12)	0.02 (0.51)	0.82 (20.81)	0.07 (1.76)	0.02 (6.80)	0.01 (2.27)
<b>F76755</b>	0.75"	2.01 (51.12)	0.01 (0.32)	1.16 (29.58)	0.07 (1.79)	0.02 (6.80)	0.01 (2.27)
<b>F76756</b>	0.75" x 0.50"	1.78 (45.14)	0.02 (0.44)	1.16 (29.58)	0.07 (1.79)	0.02 (6.80)	0.01 (2.27)
<b>F76779</b>	1.00"	2.49 (63.19)	0.01 (0.20)	1.38 (35.14)	0.05 (1.35)	0.04 (15.88)	0.01 (2.27)
<b>F76758</b>	1.00" x 0.75"	2.24 (56.99)	0.02 (0.60)	1.38 (35.14)	0.05 (1.35)	0.04 (15.88)	0.01 (2.27)
<b>F76026</b>	1.25"	3.07 (78.00)	0.01 (0.25)	1.69 (43.00)	0.10 (2.54)	0.06 (31.38)	0.01 (2.27)
<b>F76030</b>	1.25" x 0.75"	2.57 (65.20)	0.01 (0.25)	1.69 (43.00)	0.10 (2.54)	0.05 (23.30)	0.01 (2.27)
<b>F76029</b>	1.25" x 1.00"	2.80 (71.20)	0.01 (0.25)	1.69 (43.00)	0.10 (2.54)	0.06 (31.38)	0.01 (2.27)
<b>F76027</b>	1.50"	3.59 (91.20)	0.01 (0.25)	1.97 (50.00)	0.10 (2.54)	0.09 (43.42)	0.01 (2.27)
<b>F76033</b>	1.50" x 0.75"	2.83 (71.80)	0.01 (0.25)	1.97 (50.00)	0.10 (2.54)	0.06 (31.38)	0.01 (2.27)
<b>F76032</b>	1.50" x 1.00"	3.06 (77.80)	0.01 (0.25)	1.97 (50.00)	0.10 (2.54)	0.07 (33.30)	0.01 (2.27)
<b>F76031</b>	1.50" x 1.25"	3.33 (84.60)	0.01 (0.25)	1.97 (50.00)	0.10 (2.54)	0.08 (38.72)	0.01 (2.27)
<b>F76028</b>	2.00"	4.51 (114.60)	0.01 (0.25)	2.64 (67.00)	0.10 (2.54)	0.24 (109.46)	0.01 (2.27)
<b>F76034</b>	2.00" x 1.50"	4.07 (103.40)	0.01 (0.25)	2.64 (67.00)	0.10 (2.54)	0.18 (82.96)	0.01 (2.27)