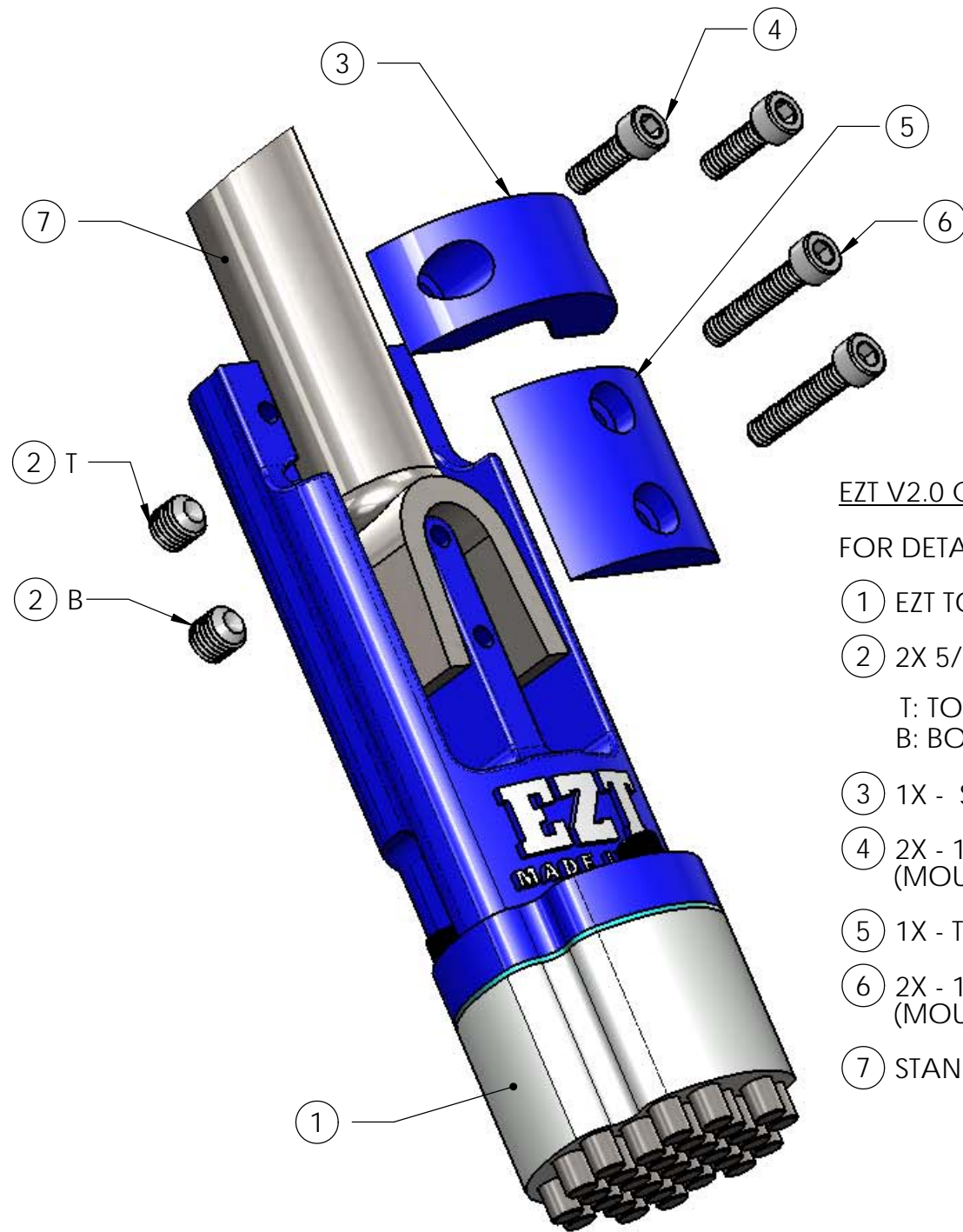


EZT HOME V2.0 PARTS LIST



EZT V2.0 COMPONENTS

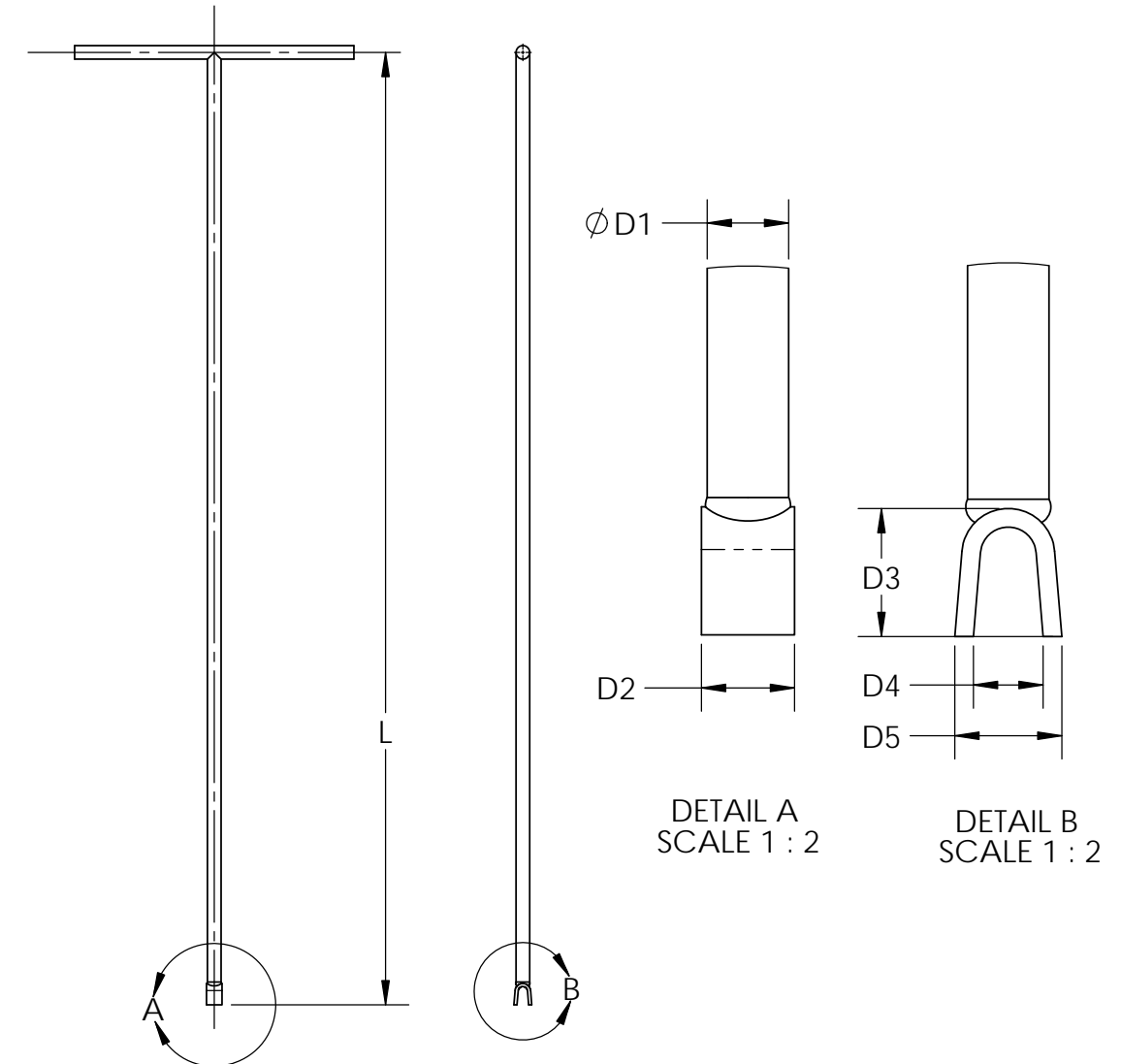
FOR DETAILED ASSEMBLY INSTRUCTIONS SEE PAGE 2

- ① EZT TOOL HEAD ATTACHMENT ASSY
- ② 2X 5/16-24 X 5/16" LG CUP POINT SET SCREW, STAINLESS STEEL
T: TOP
B: BOTTOM - OPTIONAL
- ③ 1X - SHAFT CLAMP BRACKET
- ④ 2X - 10-32X 5/8" LG SHCS, STAINLESS STEEL
(MOUNT SCREWS, SHAFT CLAMP BRACKET)
- ⑤ 1X - TOOL END CLAMP BRACKET
- ⑥ 2X - 10-32X 1.0" LG SHCS, STAINLESS STEEL
(MOUNT SCREWS, TOOL CLAMP BRACKET)
- ⑦ STANDARD CURB KEY (SOLD SEPERATELY)

FOR DETAILED ASSEMBLY INSTRUCTIONS SEE PAGE 2

STANDARD CURB KEY APPLICABLE SPECIFICATIONS

EZT HOME V2.0 HAS BEEN BROADLY DESIGNED TO ADAPT AND ASSEMBLE TO MOST STANDARD CURB KEYS REGARDLESS OF LENGTH WHILE STILL FITTING IN A 2 INCH PORT.



STANDARD CURB KEY DIMENSIONAL LIMITS

ALLOWABLE CURB KEY DIMENSIONS SHOWN IN TABLE BELOW.

DIM	DESCRIPTION	MIN	MAX
L:	CURB KEY LENGTH	ANY LENGTH	
ϕ D1	SHAFT DIAMETER	1/2"	1"
D2	WIDTH, TOOL END	13/16"	1 7/16"
D3	HEIGHT, TOOL END	1"	2"
D4	INNER SPAN, TOOL END	5/8"	-
D5	OUTER SPAN, TOOL END	1"	1 13/32"

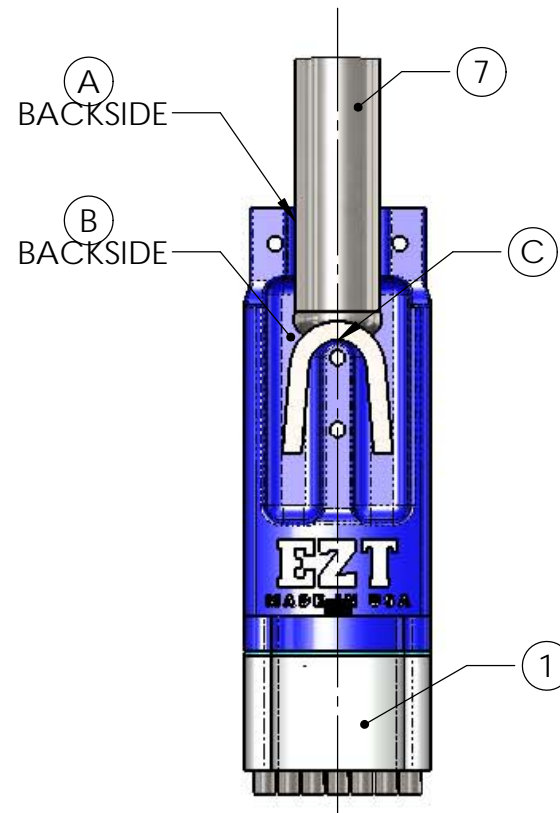
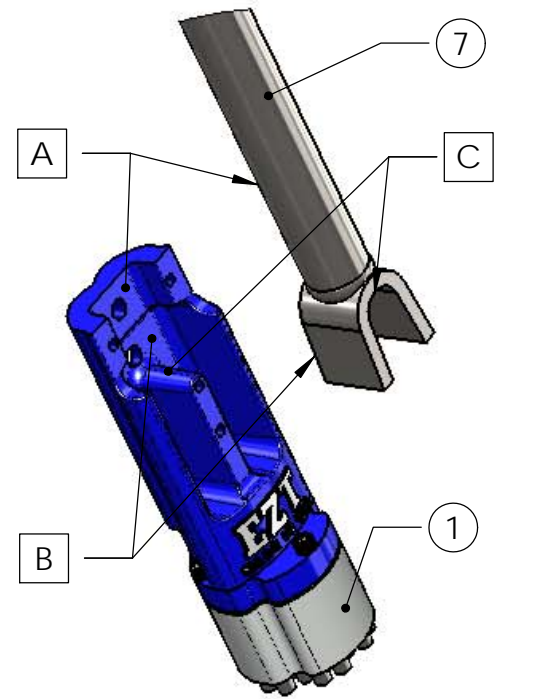
EZT HOME V2.0 - ATTACHMENT ASSEMBLY INSTRUCTIONS

- TOOL: 5/32" ALLEN WRENCH
- CONVERT YOUR STANDARD CURB KEY INTO A EZT BY FOLLOWING THESE THREE ONE TIME AND EASY ASSEMBLY STEPS.
- EZT ATTACHMENT CLAMPS FIRMLY AND SECURLY TO THE END OF YOUR CURB KEY AND WILL ROBUSTLY TRANSMIT FULL TORQUE TO VALVE ACUTATION.

STEP 1

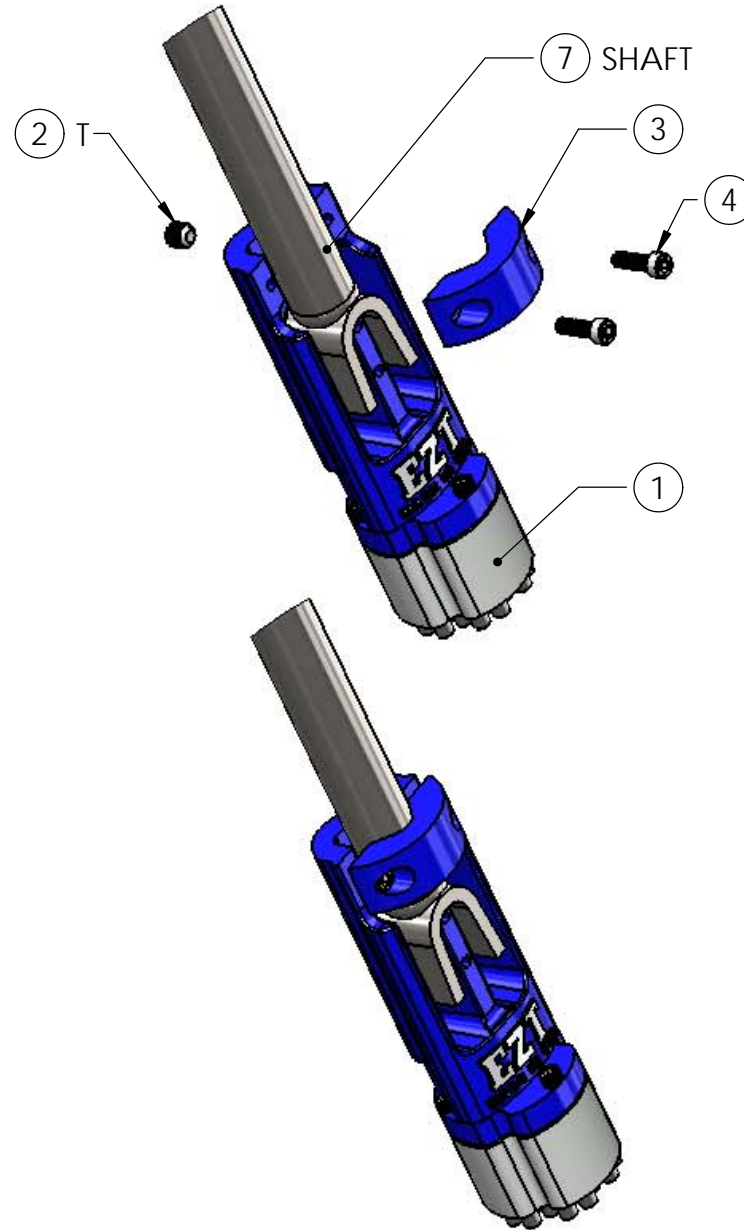
LOCATE EZT TOOL HEAD ATTACHEMENT ASSEMBLY ① ONTO CURB KEY ⑦ AT LOCATIONS:

- 1.1: ⑦ SHAFT ON ① SURF A
- 1.2: ⑦ TOOL END ON ① SURF B
- 1.3: ⑦ TOOL END "TOP OF U" ON ① SURF C



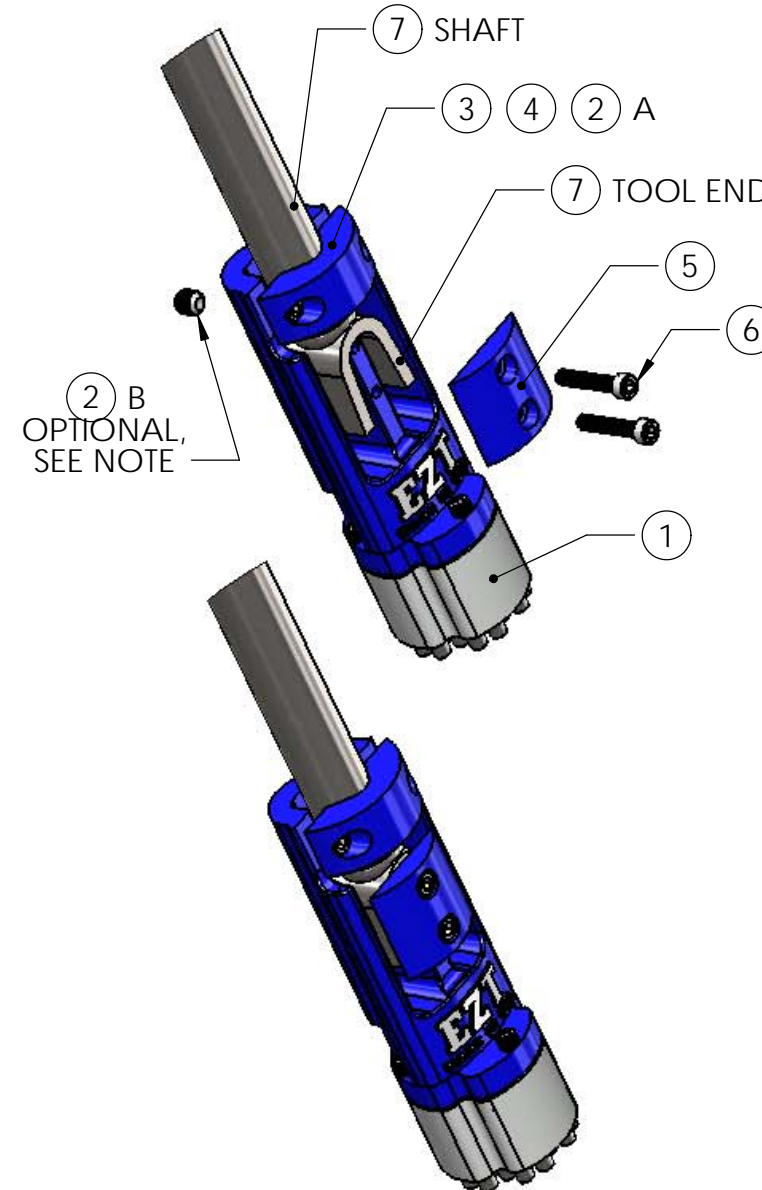
STEP 2

- 2.1 MOUNT SHAFT CLAMP ③ LOSELY AGAINST SHAFT OF CURB KEY ⑦ WITH TWO 10-32X 5/8" LG SHC SCREWS ④
- 2.2 THREAD IN SET SCREW ② T
- 2.3 LEAVE SLIGHTLY LOOSE UNTIL STEP 3.3



STEP 3

- 3.1 MOUNT TOOL END CLAMP ⑤ LOSELY AGAINST CURB KEY TOOL END, ⑦ WITH TWO 10-32X 1" LG SHC SCREWS ⑥
- 3.2 OPTION (SEE NOTE): IF NEEDED THREAD IN SET SCREW ② B.
- 3.3 LOCK AND ALIGN CURB KEY, ⑦ SHAFT DOWN BY TIGHTENING TWO SHC SCREWS ④ AND TOP SET SCREW ② A TO MAKE SECURE 3-POINT CLAMP.
- 3.4 LOCK DOWN TOOL END CLAMP ⑤ FIRMLY AGAINST CURB KEY ⑦ TOOL END BY TIGHTENING TWO SHC SCREWS ⑥.
- 3.5 OPTION (SEE NOTE): IF NEEDED TIGHEN SET SCREW ② B TO COMPLETE 3 POINT SECURE CLAMP WITH CURB KEY TOOL END ⑦. IF NOT NEEDED REMOVE ② B.



NOTE: OPTIONAL TOOL END SET SCREW ② B
 USAGE DEPENDS ON RELATIVE GEOMETRY OF CURB KEY SHAFT AND IT'S TOOL END WIDTH. IF TOOL END WIDTH IS TOO SMALL COMPARED TO SHAFT DIA THEN SET SCRWB SHOULD BE USED TO FILL IN GAP. IF NOT THEN REMOVE. SEE "CONDITION FOR USE" AND EXAMPLES BELOW:

CONDITION FOR USE:

1. **USE:** IF $d2 - \phi d1$ IS LESS THEN 3/8"
 - **EXAMPLE:**
 - $d1$ (SHAFT DIA) = 7/8"
 - $d2$ (TOOL END WIDTH) = 1 1/8"
 - $d2 - d1 = 1/4"$ IS LESS THEN 3/8":
 - **USE SET SCREW B**
2. **DO NOT USE:** IF $d2 - \phi d1$ IS GREATER THEN 3/8"
 - **EXAMPLE:**
 - $d1$ (SHAFT DIA) = 3/4"
 - $d2$ (TOOL END WIDTH) = 1 1/4"
 - $d2 - d1 = 1/2"$ IS GREATER THEN 3/8":
 - **DO NOT USE SET SCREW B**

