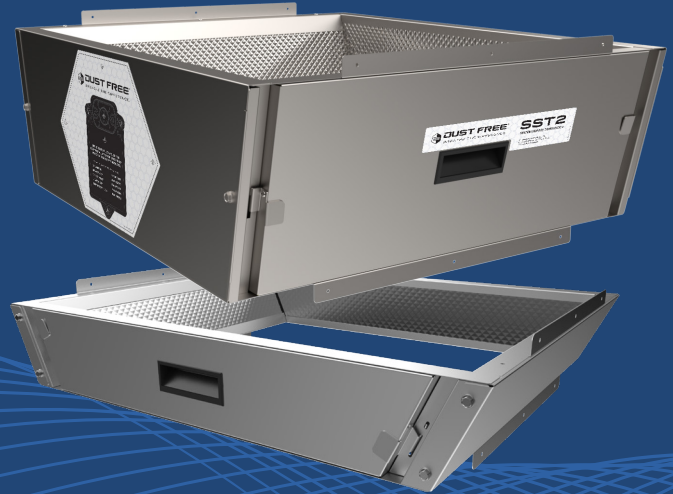


PERFORMANCE

SST2

The industry's only compact, knock-down, system transition with a true access door, large enough to allow for proper inspections and maintenance.



Optimized SEER Performance Plus Easy Service Solution.

The SST2™ System Service Transition solution allows for quick and efficient HVAC system service, while providing optimal SEER performance with 100% airflow. The removable, insulated, access door, gives the servicing contractor the space they need to properly inspect, clean, diagnose and maintain the evaporator coil and the furnace heat exchanger.

Optimized SEER Performance

The SST2 improves air flow distribution without block-offs or restrictions. Compatible with 2023 SEER2 standards.

No More Small "Inspection" Doors.

Extra-large door allows true access for inspections, cleaning, leak detection, and system checks.

Fits Multiple Applications.

Available in Side Access Series and Closet Series for upflow, horizontal, attic, closet, and basement applications.

Fully Insulated.

Fully lined with foil-backed, UV-safe, R4.3 insulation that meets application standards and code compliance for HVAC accessories.

Easy To Carry.

"Knock-down" format makes the SST2 easy to carry into tight spaces and field assemble in minutes.

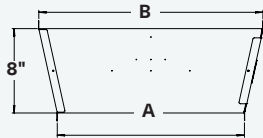
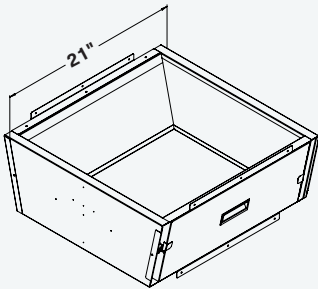
Save Time And Labor.

Save time dismantling or cutting into a system for service. Save time re-assembling and resealing the system afterward.

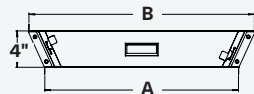
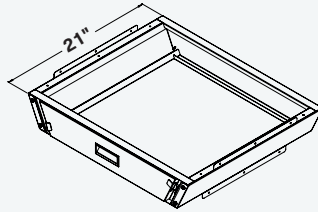
IAQ Ready.

Pre-fabricated for a variety of Dust Free® indoor air quality product installations.

SPECIFICATIONS



Side Access Series



Closet Series

Sizes	Part #	Dim A / B	Cabinet
Side Access Series	#19830	14" / 14.25"	A Furnace to A Coil
	#19831	14.25" / 17.75"	A Furnace to B Coil
	#19832	14.25" / 21.25"	A Furnace to C Coil
	#19833	17.5" / 17.75"	B Furnace to B Coil
	#19834	17.75" / 21.25"	B Furnace to C Coil
	#19835	17.75" / 24.75"	B Furnace to D Coil
	#19836	21" / 21.25"	C Furnace to C Coil
	#19837	21.25" / 24.75"	C Furnace to D Coil
	#19838	24.5" / 24.75"	D Furnace to D Coil

Sizes	Part #	Dim A / B	Cabinet
Closet Series	#19840	14" / 14.25"	A Furnace to A Coil
	#19841	14.25" / 17.75"	A Furnace to B Coil
	#19842	14.25" / 21.25"	A Furnace to C Coil
	#19843	17.5" / 17.75"	B Furnace to B Coil
	#19844	17.75" / 21.25"	B Furnace to C Coil
	#19845	17.75" / 24.75"	B Furnace to D Coil
	#19846	21" / 21.25"	C Furnace to C Coil
	#19847	21.25" / 24.75"	C Furnace to D Coil

IMAGES

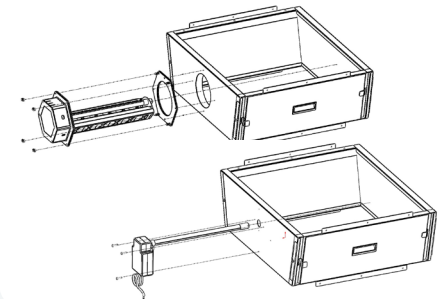


SST2 Side Access Series installed in furnace.



SST2 Closet Series installed in furnace.

IAQ READY



Side Access Series models come pre-drilled with pilot holes behind the mounting template for easy installation of Active, Carbon, Lightstick, and Lightstick Plus indoor air quality systems.

EPA Establishment No. 73316-TX-1

Dust Free® uses independent labs and universities for product testing.
 Visit <http://www.dustfree.com/testing>.

The product and technologies described are not medical devices, and are not intended to diagnose, treat, cure, or prevent any disease or illness.

1. All third-party laboratory testing paid for by Dust Free®.



Learn more at
<https://dustfree.com/product/sst2>