

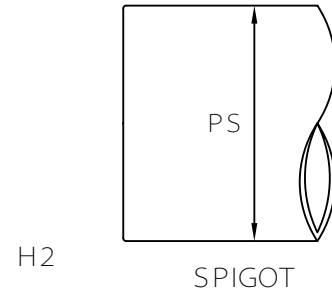
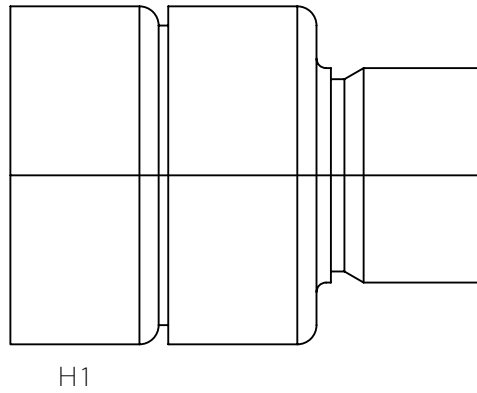
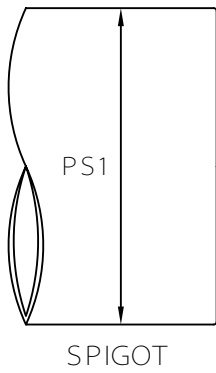


MULTI FITTINGS

# LAYING LENGTH

ISSUE DATE: NOV 15/17  
SUPERCEDES: MAY 10/05

## INCREASER COUPLING (HxH)



### FABRICATED FITTING (F)

	PS1	SIZE H1xH2	PART NUMBER	N REF	PS
F	SEW - 8.400	8x4	040610	-	SEW - 4.215
F	SEW - 10.500	10x4	040613	-	SEW - 4.215
F	SEW - 10.500	10x6	040614	-	SEW - 6.275
F	SEW - 12.500	12x4	040616	-	SEW - 4.215
F	SEW - 12.500	12x6	040617	-	SEW - 6.275
F	SEW - 12.500	12x10	040619	-	SEW - 10.500
F	SEW - 15.300	15x4	040620	-	SEW - 4.215
F	SEW - 15.300	15x6	040621	-	SEW - 6.275
F	SEW - 15.300	15x8	040622	-	SEW - 8.400
F	SEW - 18.701	18x10	040101	6.000	SEW - 10.500
P	SEW - 24.803	24x18	040086	-	SEW - 18.701