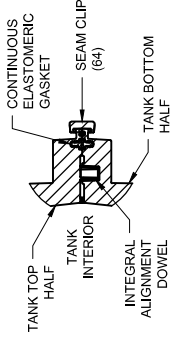


TANK EXTERIOR LENGTH	134.2 [3,409]
WIDTH	61.7 [1,567]
HEIGHT	54.5 [1,384]

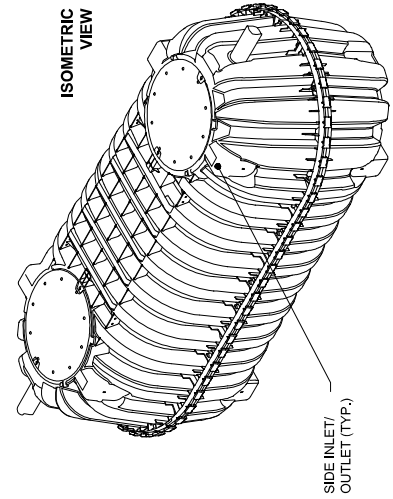
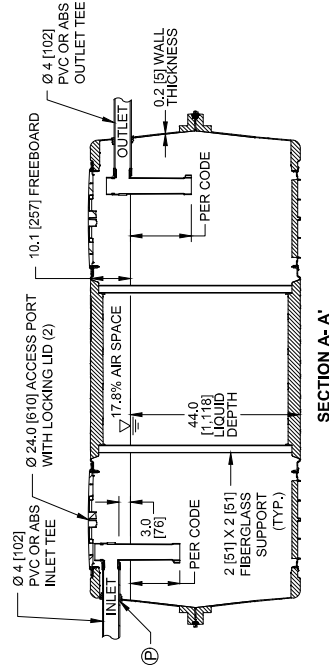
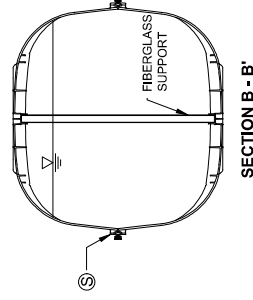
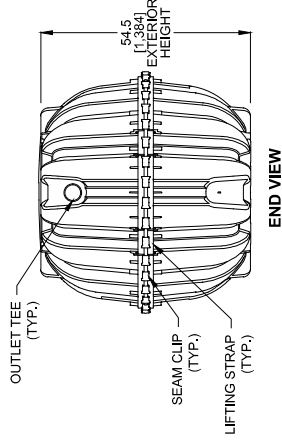
LIQUID DEPTH	44.0 [1,118]
INVERT DROP	3.0 [76]
FREEBOARD	10.1 [257]

Ⓟ PIPE PENETRATION SECTION DETAIL



TOTAL CAPACITY	1,309 GAL [4,956 L]
WORKING VOLUME	1,111 GAL [4,207 L]

Ⓢ MID-HEIGHT SEAM SECTION DETAIL



**NOTES:**

1. ALL DRAWING DIMENSIONS IN INCHES [MILLIMETERS] OR AS NOTED.
2. EXTERIOR OF ACCESS OPENING LID INCLUDES THE FOLLOWING WARNING IN ENGLISH, FRENCH & SPANISH: "DANGER DO NOT ENTER; POISON GASES."
3. TANK MARKINGS WILL INCLUDE: MANUFACTURER NAME, MODEL NUMBER, LIQUID CAPACITY, DATE OF MANUFACTURE, MAXIMUM BURIAL DEPTH, INLET, AND OUTLET.
4. MAXIMUM BURIAL DEPTH IS 48 in [1,219 mm].
5. MINIMUM BURIAL DEPTH IS 6 in [152 mm].
6. TANK IS FOR NON-TRAFFIC APPLICATIONS.
7. AIRSPACE IS 17.8%.
8. OUTLET TEE IS COMPATIBLE WITH AN EFFLUENT FILTER.
9. LENGTH TO WIDTH RATIO IS 2.3:1 (120.1-INCH LENGTH / 51.8-INCH WIDTH = 2.3).

DRAWN BY	P/N
DATE	10/15/2025
SCALE	NTS
SHEET NO.	04 of 04

**CM-Tank**

CM-1060

1-COMPARTMENT SEPTIC TANK CONFIGURATION

**Infiltrator**  
Water Technologies  
Part of **ADS**

INFILTRATOR WATER TECHNOLOGIES, LLC  
4 BUSINESS PARK RD. OLD SAYBROOK, CT 06475  
WWW.INFILTRATORWATER.COM  
PHONE: (800) 221-4436 / EMAIL: INFO@INFILTRATORWATER.COM

