

Fixture Type:

Catalog Number:

Project:

Location:

DESCRIPTION

Flexible, customizable, uniform illumination, with the lowest profile. Linear Alpine delivers seamless line of light and performance with premium light quality without the need for additional diffused covers or accessories. Strong 3M adhesive bond for easy installation.

FEATURES

- Damp Location listed
- Title 24 Compliant
- UL/cUL listed
- Available in convenient spools up to 100ft
- Cut and securely reconnect with ease
- May be cut every 2 inches
- Good color rendering
- Suitable for installation in a clothes closet
- 50,000 hour rated life
- 5 year product warranty

SPECIFICATIONS

Construction:	Flexible Light Strip
Cutting Interval:	2"
Input:	24VDC
Lumens:	100/200/300 lm/ft
CRI:	90
McAdams Steps:	3
Color Temp:	2700K, 3000K, 3500K, 4000K
Rated Life:	50,000 Hours
Operating Temp:	-4°F to 104°F (-20°C to 40°C)
Standards:	UL, cUL, Damp Location Listed, Title 24 Compliant
Max Run:	

Total Length of Lead Wire Between Power Supply to Tape	Max Run Length					
	GE1		GE2		GE3	
	60W	96W	60W	96W	60W	96W
6FT (Comes std. with PS)	40ft	40ft	24ft	30ft	15ft	24ft
12FT	40ft	40ft	24ft	30ft	15ft	24ft
18FT	40ft	40ft	24ft	26ft	15ft	17ft
24FT	32ft	32ft	20ft	20ft	12ft	12ft
30FT	25ft	25ft	16ft	16ft	10ft	10ft
40FT	19ft	19ft	12ft	12ft	7ft	7ft

System	Lumens	Max Run	Power	Length	Color Temp	Color
T24-GE1	100+ lm/ft	40ft (60W), 40ft (96W)	1.2W/ft	15 24 100	27 2700K 30 3000K 35 3500K 40 4000K	WT White
T24-GE2	200+ lm/ft	24ft (60W), 30ft (96W)	2.2W/ft			
T24-GE3	300+ lm/ft	15ft (60W), 24ft (96W)	3.9W/ft			

Example: **T24-GE3-24-27WT**

wacighting.com
Phone (800) 526.2588
Fax (800) 526.2585

Headquarters/Eastern Distribution Center
44 Harbor Park Drive
Port Washington, NY 11050

Central Distribution Center
1600 Distribution Ct
Lithia Springs, GA 30122

Western Distribution Center
1750 Archibald Avenue
Ontario, CA 91760

GEMINI

Power Supplies and Accessories



Class 2 Power Supply (Required)

		Model	Dimension	Input	Output	Dimming
	<ul style="list-style-type: none"> • ELV Dimming 100%-10% • 6ft Output lead wires 	EN-BT60-24	6½" x 2½" x 1¼"	120V	24VDC 60W	ELV
		EN-BT96-24	6½" x 2½" x 1¼"	120V	24VDC 96W	ELV
	<ul style="list-style-type: none"> • TRIAC, ELV Dimming 100%-1% • Universal Input, ≤ 0.9 pf • Overload and short circuit protection 	PS-24DC-U60R-BT	8½" x 2½" x 1¼"	120V-277V	24VDC 60W	ELV/TRIAC
		PS-24DC-U96R-BT	8½" x 2½" x 1¼"	120V-277V	24VDC 96W	ELV/TRIAC
	Remote	EN-24100-277-RB2	Includes a 6' lead wire. UL Class 2 output.	277VAC	24VDC / 96W	100%-5% 0-10V
	Wall Dimmer & Driver	EN-D24100-120-R	Includes a 6' lead wire. UL Class 2 output.	120VAC	24VDC / 96W	Integral

Accessories

Tape to Tape Connector		T24-BS-MM-CL	10 pcs	Clear	Connects Tape Sections
Tape to Tape Corner Connector		T24-BS-L-CL	2 pcs	Clear	Connects Tape Sections
Power to Tape Connector		T24-BS-PM-CL	10 pcs	Clear	Connects tape sections and power feed
Flex Y Connector		T24-BS-Y-WT T24-BS-Y-BK	1 pc	White Black	Connects tape sections and power feed
Flex X Connector		T24-BS-X-WT T24-BS-X-BK	1 pc	White Black	Connects tape sections and power feed, includes LED-T-B
Low Voltage Wiring Box		LED-T-B		White	Neatly house connections for up to 2 wires
Joiner Cable		T24-BS-IC-002 T24-BS-IC-006 T24-BS-IC-012 T24-BS-IC-036 T24-BS-IC-072	2 inches 6 inches 1 foot 3 feet 6 feet	BK Black WT White	Extends distance between tape sections
Extension Cable		T24-BS-EX2-072 T24-BS-EX2-144 T24-BS-EX2-240 T24-BS-EX2-480	6 feet 12 feet 20 feet 40 feet	BK Black WT White	Extends distance between tape sections and power supply (Includes a LED-T-B & screw driver)
Plastic Mounting Clip		T24-BS-CL1	10pcs	Clear	For installation on non-flat surfaces. Includes: 10 pcs plastic mounting clips and 10 pcs screws.
IR Sensor		IR-96-24VACDC-BK IR-96-24VACDC-WT		Black White	IR (Infrared sensor) switch works by turning the light on when it becomes unobstructed.

wacighting.com
Phone (800) 526.2588
Fax (800) 526.2585

Headquarters/Eastern Distribution Center
44 Harbor Park Drive
Port Washington, NY 11050

Central Distribution Center
1600 Distribution Ct
Lithia Springs, GA 30122

Western Distribution Center
1750 Archibald Avenue
Ontario, CA 91760

GEMINI

Indoor Aluminum Channels

WAC



Aluminum Channel **LED-T-CH** 5 feet
Additional End Caps **LED-T-CH-EC** 2 pcs

*Diffuses light from InvisiLED® tape
 Includes a diffuser, two end caps, and five screws*



Deep Aluminum Channel **LED-T-CH1** 5 feet
Additional End Caps **LED-T-CH1-EC** 2 pcs

*Eliminates visible hot spots
 Includes a diffuser, two end caps, and five screws*



45° Angled Aluminum Channel **LED-T-CH2** 5 feet
Additional End Caps **LED-T-CH2-EC** 2 pcs

Includes a diffuser, two end caps, and five screws



Deep Aluminum Channel - Flood 54° Beam Angle **LED-T-CH3-FL** 5 feet
Additional End Caps **LED-T-CH1-EC** 2 pcs

Eliminates visible hot spots / 54° beam angles



Deep Aluminum Channel - Spot 9° Beam Angle **LED-T-CH3-SP** 5 feet
Additional End Caps **LED-T-CH1-EC** 2 pcs

Eliminates visible hot spots / 9° beam angles



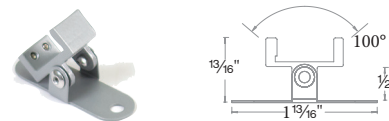
Deep Aluminum Channel - Wide Flood 84° Beam Angle **LED-T-CH3-WF** 5 feet
Additional End Caps **LED-T-CH1-EC** 2 pcs

Eliminates visible hot spots / 84° beam angles



Fixed Angle Channel Clip **LED-T-CL3-PT**

Includes 2 pieces, 4 screws. Use to mount Aluminum Channel.



Adjustable Channel Clip **LED-T-CL2-PT**

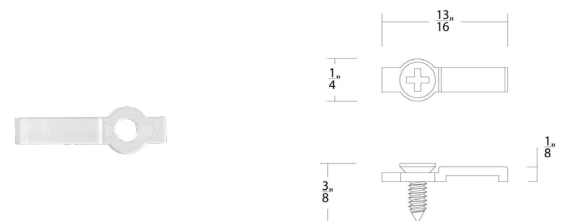
*Includes 2 pieces, 4 screws. Used to mount Aluminum Channel.
 Adjusts 50° from center either way.*

INDOOR MOUNTING ACCESSORIES



Aluminum Retrofit Channel **LED-T-RC** 3 feet

Can be bent to create fixed curves or used as a glare shield



Plastic Mounting Clip **T24-BS-CL1** *Clear*

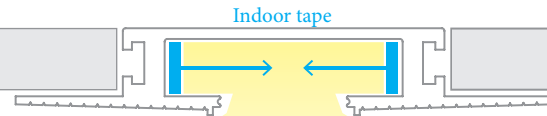
*For installation on non-flat surfaces
 Includes: 10 pcs plastic mounting clips and 10 pcs screws*

wacighting.com
 Phone (800) 526.2588
 Fax (800) 526.2585

Headquarters/Eastern Distribution Center
 44 Harbor Park Drive
 Port Washington, NY 11050

Central Distribution Center
 1600 Distribution Ct
 Lithia Springs, GA 30122

Western Distribution Center
 1750 Archibald Avenue
 Ontario, CA 91760

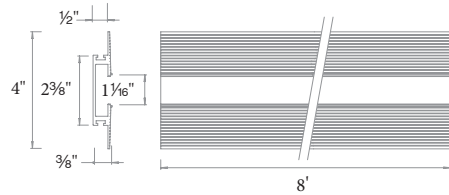


- Installs within $\frac{5}{8}$ " drywall depth
- Linear channel can be field cut
- Accommodates either one or two runs of indoor tape
- Includes a translucent white acrylic diffuser
- Dense foam insert to be removed in installation after spackling

8ft Linear Channel

LED-T-RCH1-WT

- Includes: 1 diffuser
- 8 perforated metal sheets

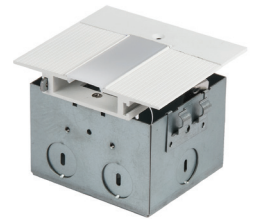
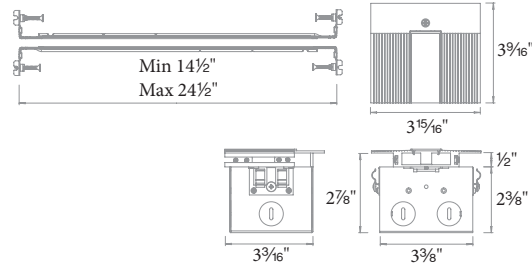


Power Feed

LED-T-RBOX1-WT

- The end cap may be placed on either side
- Hanger bars may be installed on any side of the wiring box
- Kit includes:

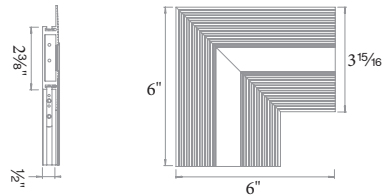
- 1 wiring box
- 2 hanger bars
- 4 five-pin adapters
- 2 end caps
- 1 diffuser
- 2 channel connectors
- 1 counter sink drill bit
- 1 drill bit
- 1 installation tool



Lateral Corner

LED-T-CTC1-WT

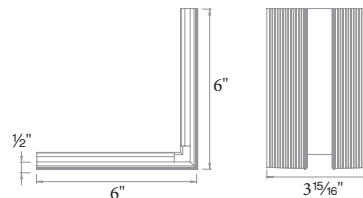
- Includes: Diffuser
- 2 channel connectors
- 2 perforated metal sheets



Perpendicular Corner

LED-T-WTC1-WT

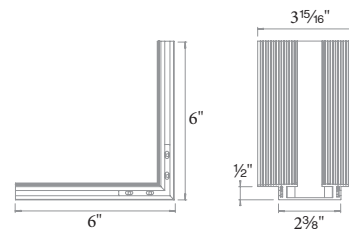
- Transitions between walls or wall to ceiling
- Includes: Diffuser
- 2 channel connectors
- 2 perforated metal sheets



Outside Corner

LED-T-WTW1-WT

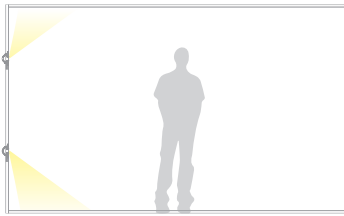
- Transitions around columns, bump outs, or soffits
- Includes: Diffuser
- 2 channel connectors
- 2 perforated metal sheets



GEMINI

Asymmetrical Recessed Channel

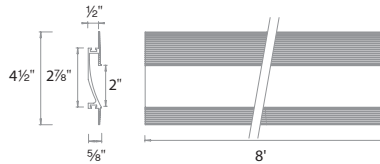
WAC



Installs within 5/8" drywall depth
 Linear channel can be field cut
 Accommodates one run of indoor tape
 Dense foam insert to be removed in installation after spackling
 Recommended installation within 15 inches of surface to be illuminated

8ft Linear Channel **LED-T-RCH2-WT**

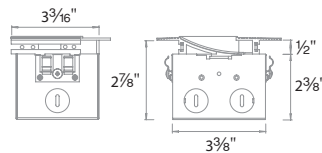
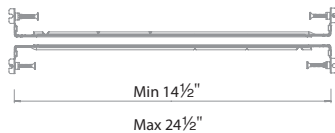
Includes: 8 perforated metal sheets
 2 channel connectors



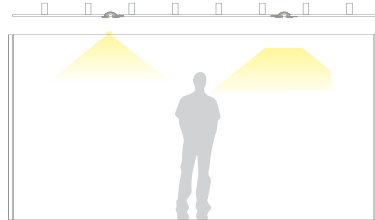
Power feed **LED-T-RBOX2-WT**

The end cap may be placed on either side
 Hanger bars may be installed on any side of the wiring box

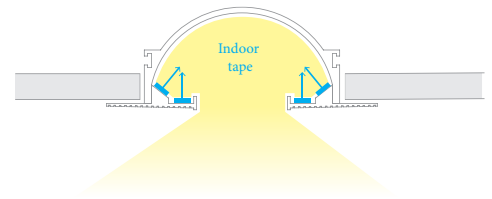
Includes: 1 wiring box
 2 hanger bars
 2 five-pin adapters
 2 end caps (left and right)
 2 channel connectors
 1 counter sink bit
 1 drill bit



Indirect Recessed Channel

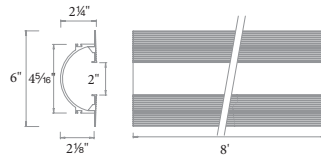


Linear channel can be field cut
 Accommodates up to four runs of indoor tape
 Dense foam insert to be removed in installation after spackling
 Allows option to use different color tape in one channel and switch them separately



8ft Linear Channel **LED-T-RCH3-WT**

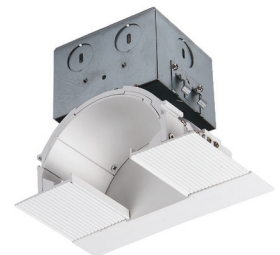
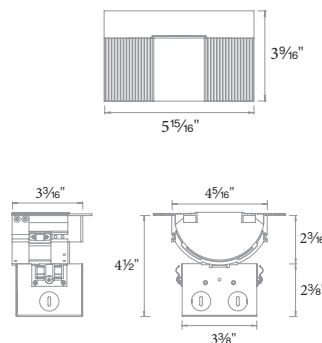
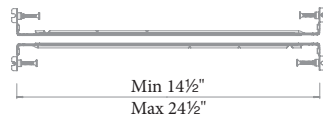
Includes: 10 perforated metal sheets
 2 channel connectors



Power feed **LED-T-RBOX3-WT**

The end cap may be placed on either side
 Hanger bars may be installed on any side of the wiring box

Includes: 1 wiring box
 2 hanger bars
 4 five-pin adapters
 1 end cap
 2 channel connectors
 1 counter sink drill bit
 1 drill bit



wacighting.com
 Phone (800) 526.2588
 Fax (800) 526.2585

Headquarters/Eastern Distribution Center
 44 Harbor Park Drive
 Port Washington, NY 11050

Central Distribution Center
 1600 Distribution Ct
 Lithia Springs, GA 30122

Western Distribution Center
 1750 Archibald Avenue
 Ontario, CA 91760