



**Irvine™**  
59" x 29-1/2" freestanding bath  
**K-26079**

**Features**

- Freestanding design creates a striking focal point in your bathing area
- 18" (457 mm) depth offers a deep soaking experience
- Integral lumbar support
- Slotted overflow allows for deep soaking
- Center toe-tap drain color-matched to the bath

**Material**

- Acrylic

**Installation**

- Freestanding
- Center drain

**Included Components**

1381626-0 Drain Assembly, White



**Codes/Standards**

CSA B45.5/IAPMO Z124  
ASTM E162  
ASTM E662


**KOHLER® Plastic Baths and Shower  
Bases Lifetime Limited Warranty**

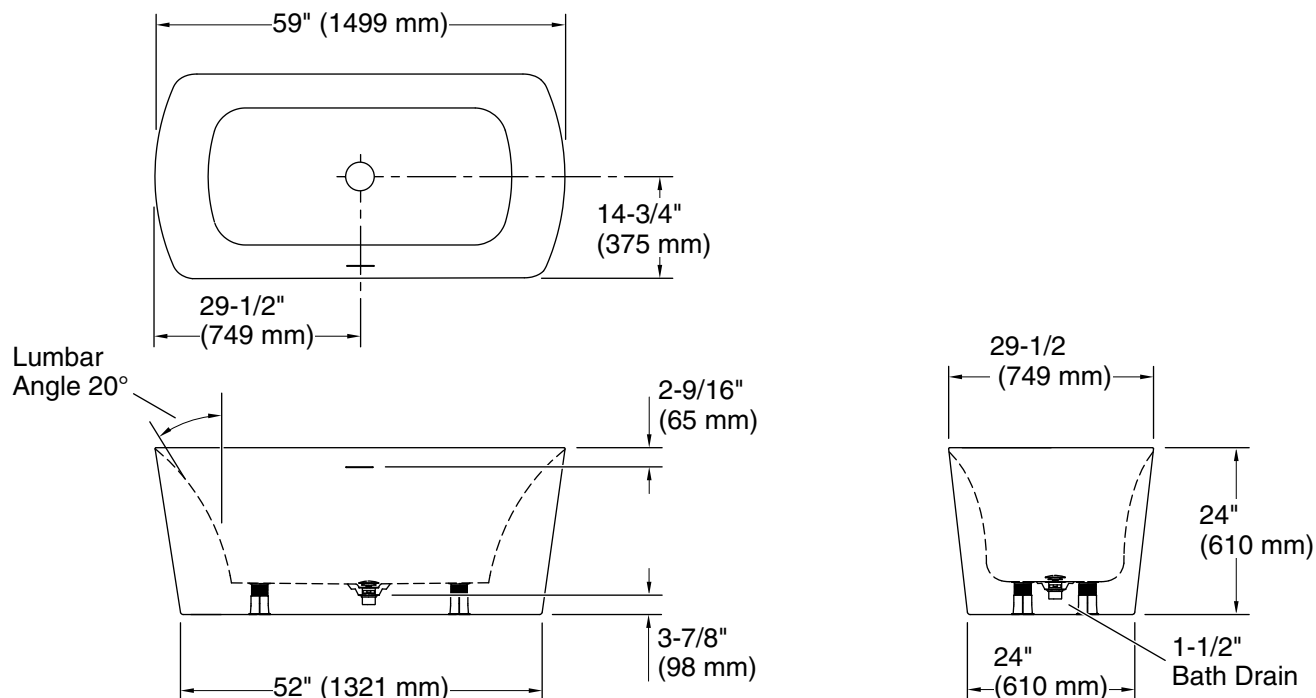
See website for detailed warranty information.

**Available Colors/Finishes**

*Color tiles intended for reference only.*

Color	Code	Description
-------	------	-------------

	0	White
---	---	-------



## Technical Information

All product dimensions are nominal.

Drain location:	Center
Basin area, bottom:	43-11/16" x 19-5/8" (1110 mm x 498 mm)
Basin area, top:	58-5/16" x 28-3/4" (1481 mm x 731 mm)
Weight:	90 lbs (40.8 kg)
Water depth:	15-13/16" (402 mm)

## Notes

Measure your actual product for rough-in details.

Install this product according to the installation instructions.

The hot water supply should be 70% of the capacity of the bath or greater. Installations will vary.