

Submittal Data

PROJECT:	UNIT TAG:	QUANTITY:
REPRESENTATIVE: _____	TYPE OF SERVICE:	DATE: _____
ENGINEER:	SUBMITTED BY:	DATE:
CONTRACTOR:	APPROVED BY:	DATE:
	ORDER NO.:	DATE:

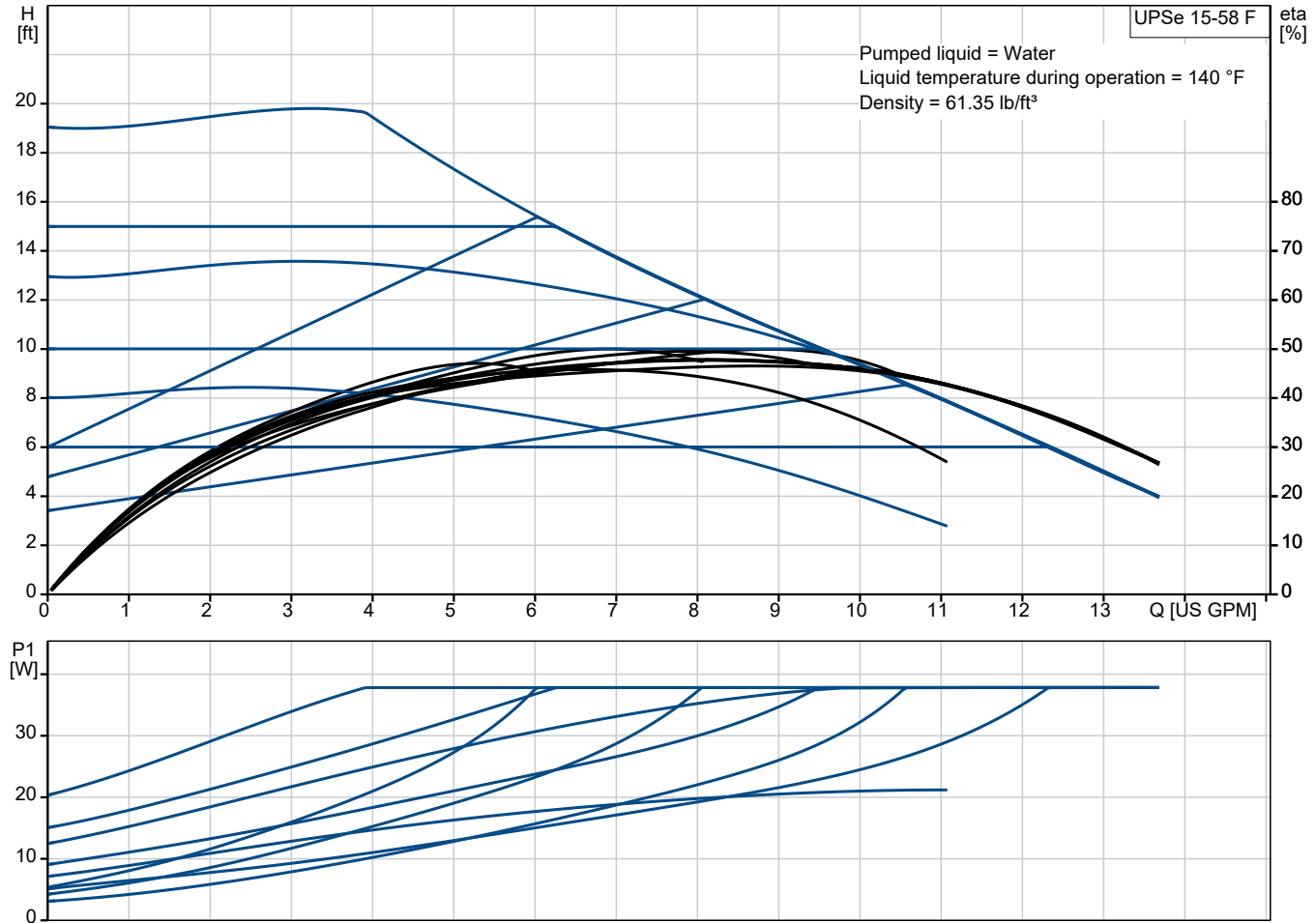


UPSe 15-58 F

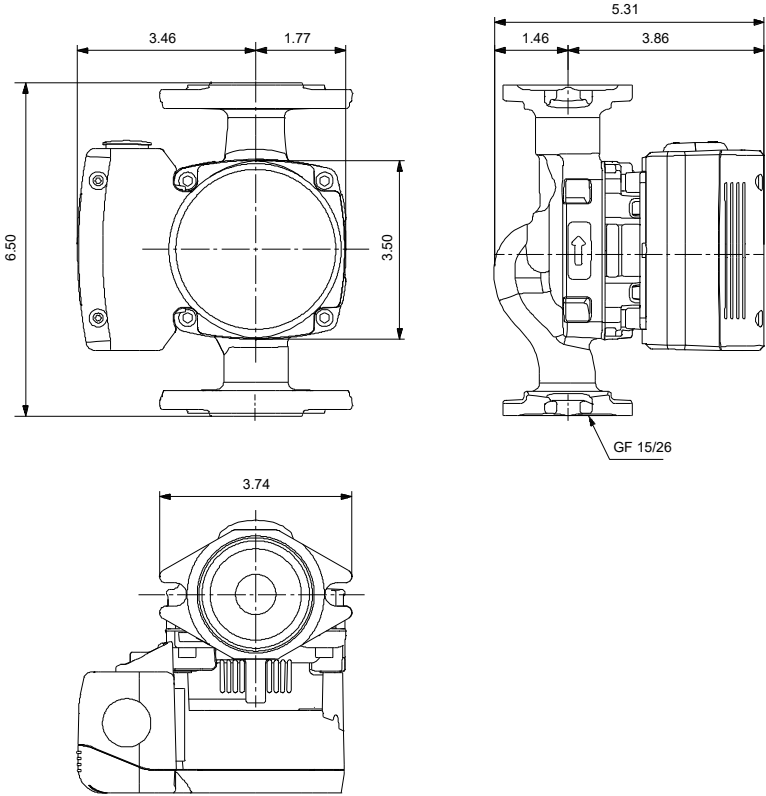
UPSe is a high-efficiency circulator designed for heating systems. It offers high energy savings compared to traditional non-ECM pumps and three control modes that make it suitable for any heating application.

Note! Product picture may differ from actual product

Conditions of Service	Pump Data	Motor Data
Liquid: Water	Maximum operating pressure: 175.0 PSI	Mains frequency: 60 Hz
Temperature: 140 °F	Liquid temperature range: 35.6 .. 230 °F	
Specific Gravity: 0.985	Maximum ambient temperature: 131 °F	
	Pipe connection: GF 15/26	
	Product number: 92603106	

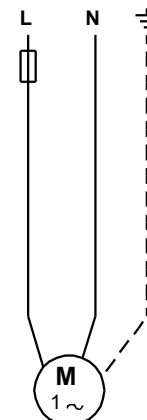
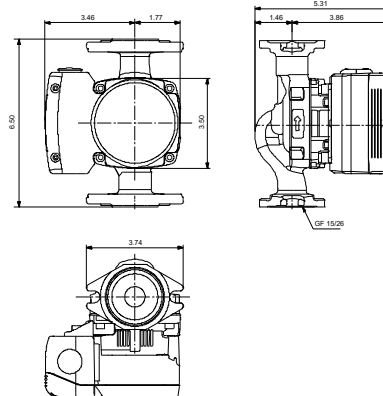
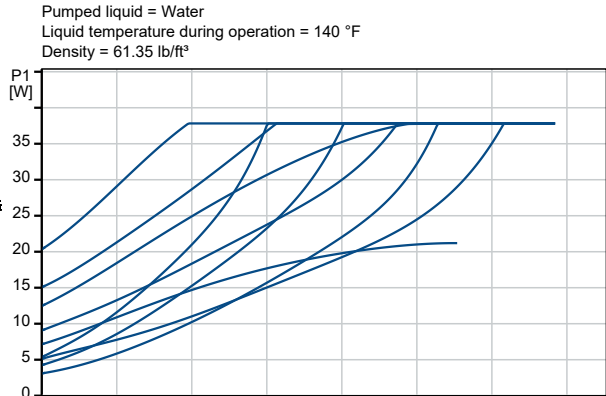
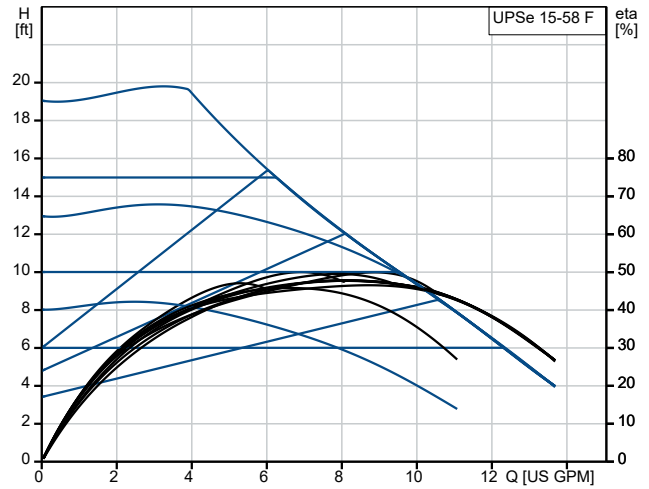


Submittal Data

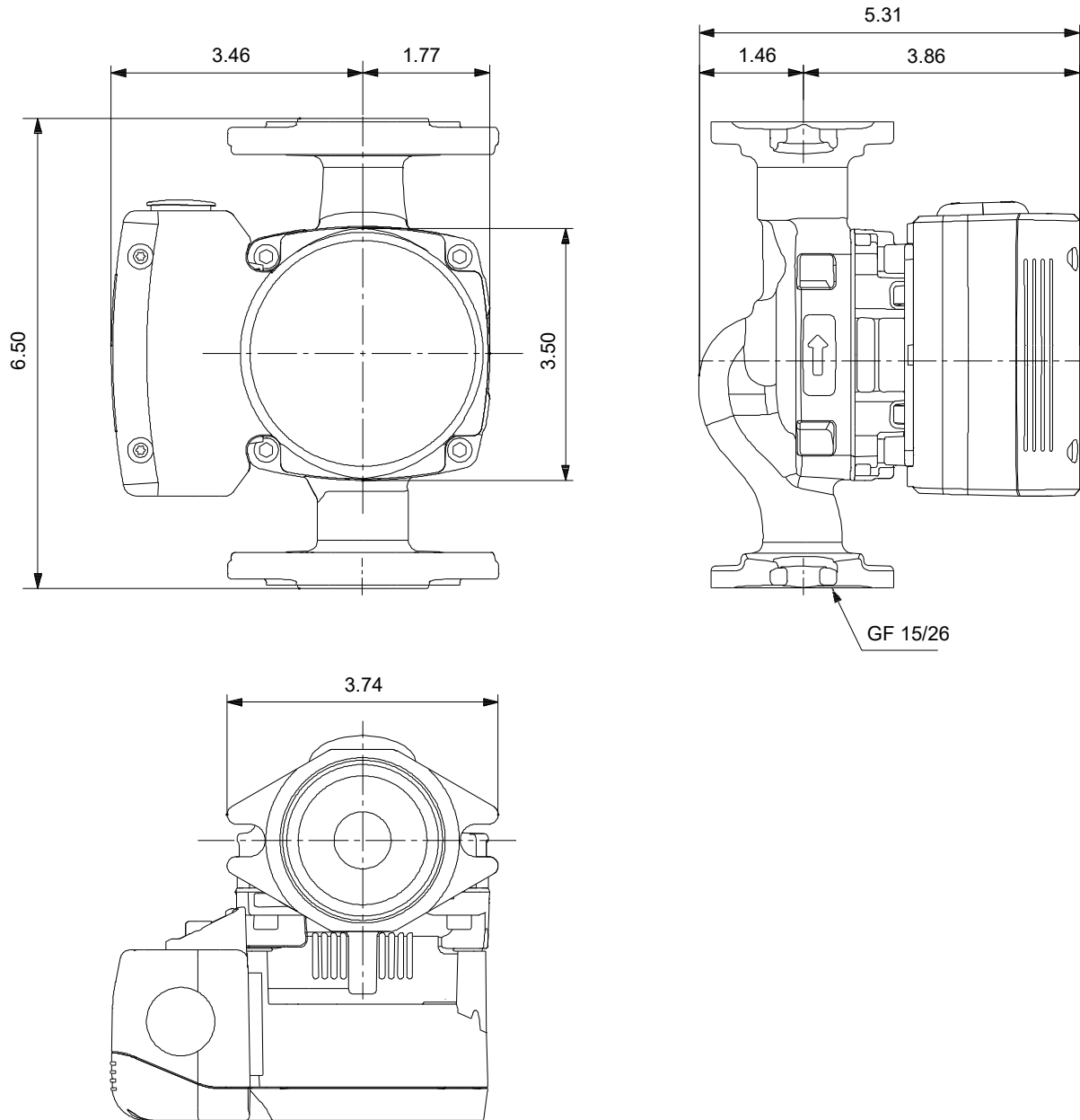


Materials:
Pump housing: Cast iron
Pump housing: ASTM A48-25A
Impeller: Composite

Description	Value
General information:	
Product name:	UPSe 15-58 F
Product No:	92603106
EAN number:	5715116925189
Technical:	
Rated flow:	8.37 US GPM
Rated head:	11.16 ft
TF class:	110
Approvals:	FCC, cULus
Model:	A
HI Energy Rating:	193
Materials:	
Pump housing:	Cast iron
Pump housing:	EN 1561 EN-GJL-150
Pump housing:	ASTM A48-25A
Impeller:	Composite
Impeller:	PESU 30% gf + PESU-GF20%
Installation:	
Range of ambient temperature:	32 .. 131 °F
Maximum permissible operating pressure:	175.0 PSI
Pipe connection:	GF 15/26
Pressure rating for connection:	PN 12
Port-to-port length:	6 1/2 in
Liquid:	
Pumped liquid:	Water
Liquid temperature range:	35.6 .. 230 °F
Selected liquid temperature:	140 °F
Density:	61.35 lb/ft³
Electrical data:	
P1 min.:	3.4 W
P1 max.:	38 W
Mains frequency:	60 Hz
Rated voltage:	1 x 115 V
Maximum current consumption:	0.71 A
Enclosure, Type:	2
Others:	
Net weight:	5.29 lb
Gross weight:	5.95 lb
Shipping volume:	0.25 ft³
Sales region:	Namreg
Country of origin:	DK
Custom tariff no.:	8413.70.2005



92603106 UPSe 15-58 F 60 Hz



Note! All units are in [in] unless others are stated.
Disclaimer: This simplified dimensional drawing does not show all details.



Company name:

Created by:

Phone:

Date: 02/10/2024

Order Data:

Position	Your pos.	Product name	Amount	Product No	Total
		UPSe 15-58 F	1	92603106	