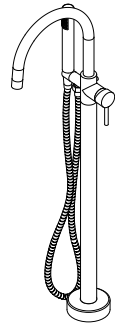






SYMMONS® DIA™



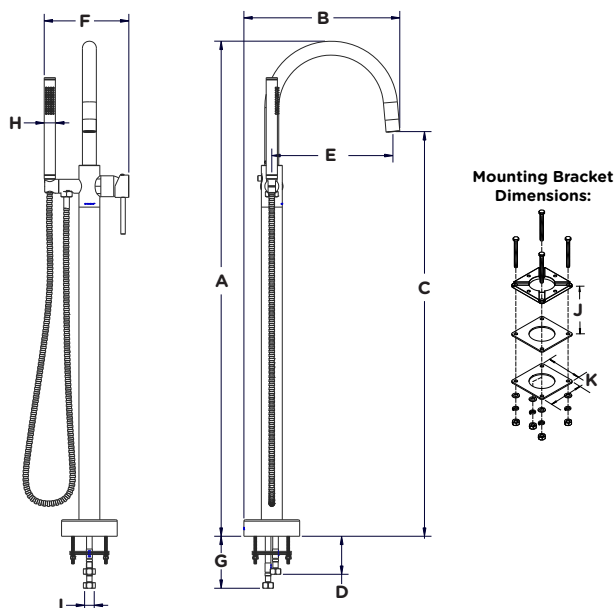
FSTF357220
Floor Standing Tub Filler
Specification Submittal

Model Numbers	Feature Highlights
<input type="checkbox"/> FSTF357220 <i>Floor standing tub filler</i>	<ul style="list-style-type: none">• Ceramic cartridge• push button to divert from spout to hand shower• 60" flexible metal hose• 1 mode hand shower• 2.0 gpm (7.6 L/min) hand shower• Floor Standing Tub Filler shall be metal construction plated in standard polished chrome finish• 5.3 gpm (20.1 L/min) at 45 psi• 6.5 gpm (24.6 L/min) at 60 psi
Options/ Modifications	Warranty
<input type="checkbox"/> STN <i>Satin nickel finish</i> <input type="checkbox"/> MB <i>Matte black finish</i> <input type="checkbox"/> BBZ <i>Brushed bronze finish</i>	<p>Limited Lifetime - to the original end purchaser in consumer/residential installations.</p> <p>10 Years - for commercial/industrial installations. Refer to www.symmons.com/warranty for complete warranty information.</p>
<p>Note: Append appropriate -suffix to model number.</p>	
Compliance	
<p>- ASME A11.18.1 - CSA B125.1</p> 	

Architectural/Engineering Specification

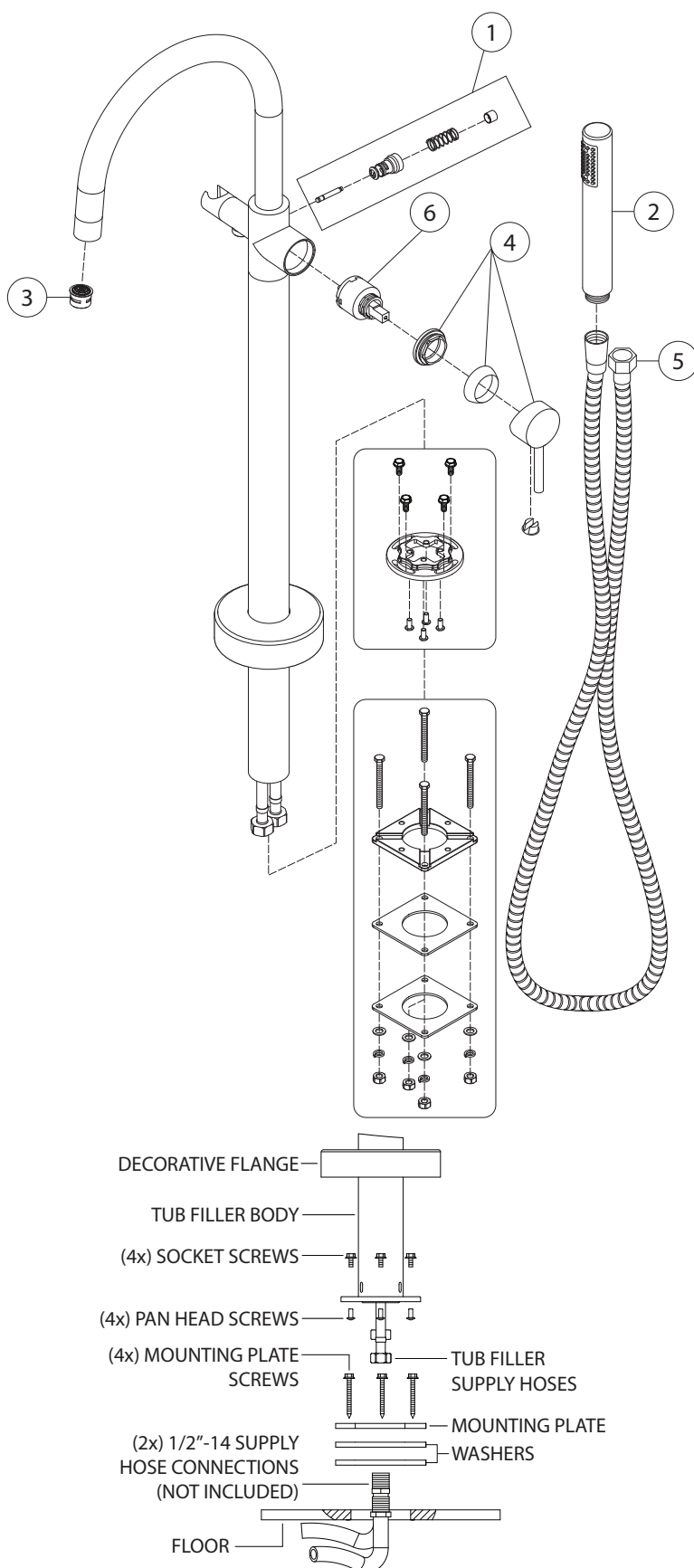
Floor standing tub filler with ceramic cartridge and push button to divert from spout to hand shower. Includes 60" flexible metal hose and a 2.0 gpm (7.6L/min) hand shower. Modifications include "Satin nickel finish", "Matte black finish", and "Brushed bronze finish".

Dimensions



Measurements	
A	42", 1067mm
B	13-1/4" 336mm
C	34-3/8", 872mm
D	3-1/4", 82mm
E	10-1/4", 261mm
F	7-3/16", 182mm
G	4-1/2", 112mm
H	15/16", 24mm
I	2X1/2-14NPSM
J	1.25" MAX FLOOR THICKNESS, 25mm
K	2.75", 70mm

Installation/Parts Breakdown



Item	Description	Part Number
1	Push Button Kit	RFST001*
2	Hand Shower	432W-2.0*
3	Stream Straightener	RT-05209
4	Handle Kit	RFST002*
5	60" Hose	RTS-045*
6	Cartridge	RT-05173

*Note: Append -STN, -MB, or -BBZ to part number for premium finish.

Tools Required	
Adjustable Wrench	
Drill	
Phillips Head Screwdriver	
Plumber Tape	
Safety Glasses	
Silicone	

Installation Notes:

- 1) Apply a bead of silicone around the perimeter of all faucet trim installed to deck surface.
- 2) Apply plumber tape to threaded connections as necessary. DO NOT use plumber tape on fittings with face seal washers or o-rings.
- 3) DO NOT OVERTIGHTEN fittings with face seal washers or o-rings.