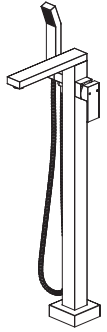



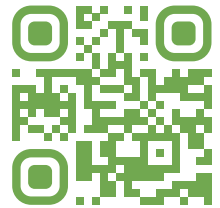


**SYMMONS® DURO™**

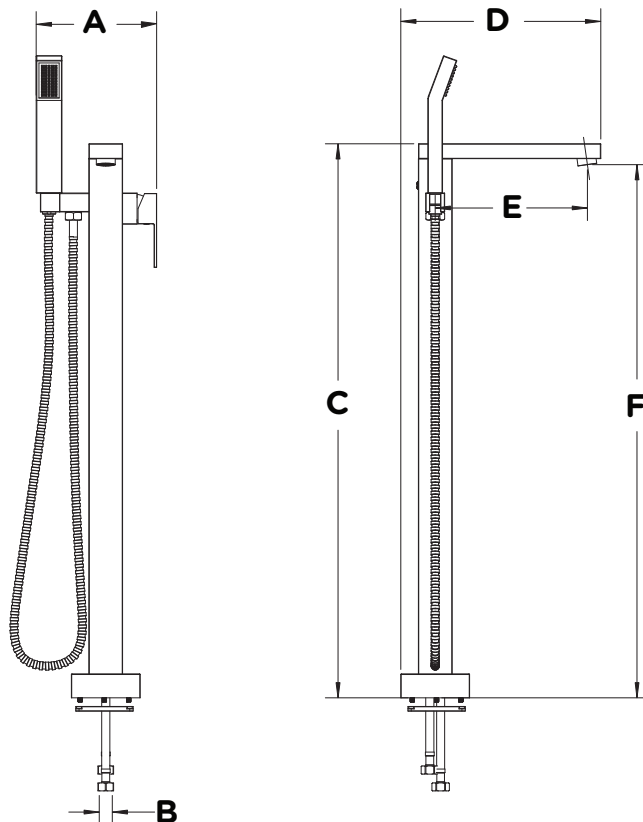


FSTF367220  
Floor Standing Tub Filler  
**Operation & Maintenance Manual**

Model Numbers	Feature Highlights
<input type="checkbox"/> <b>FSTF367220</b> Floor standing tub filler	<ul style="list-style-type: none"><li>• Ceramic cartridge</li><li>• Push button to divert from spout to hand shower</li><li>• 60" flexible metal hose</li><li>• 1 mode hand shower</li><li>• 2.0 gpm (7.6 L/min) hand shower</li><li>• Floor Standing Tub Filler shall be metal construction plated in standard polished chrome finish</li><li>• 5.3 gpm (20.1 L/min) at 45 psi tub filler</li><li>• 6.5 gpm (24.6 L/min) at 60 psi tub filler</li></ul>
Options/Modifications	
<input type="checkbox"/> <b>STN</b> Satin nickel finish	
<input type="checkbox"/> <b>MB</b> Matte black finish	
<input type="checkbox"/> <b>BBZ</b> Brushed bronze finish	<b>Warranty</b>
<b>Note:</b> Append appropriate -suffix to model number.	
Compliance	<b>Limited Lifetime</b> - to the original end purchaser in consumer/residential installations. <b>10 Years</b> - for commercial/industrial installations. Refer to <a href="http://www.symmons.com/warranty">www.symmons.com/warranty</a> for complete warranty information.
- ASME A11.18.1 - CSA B125.1	



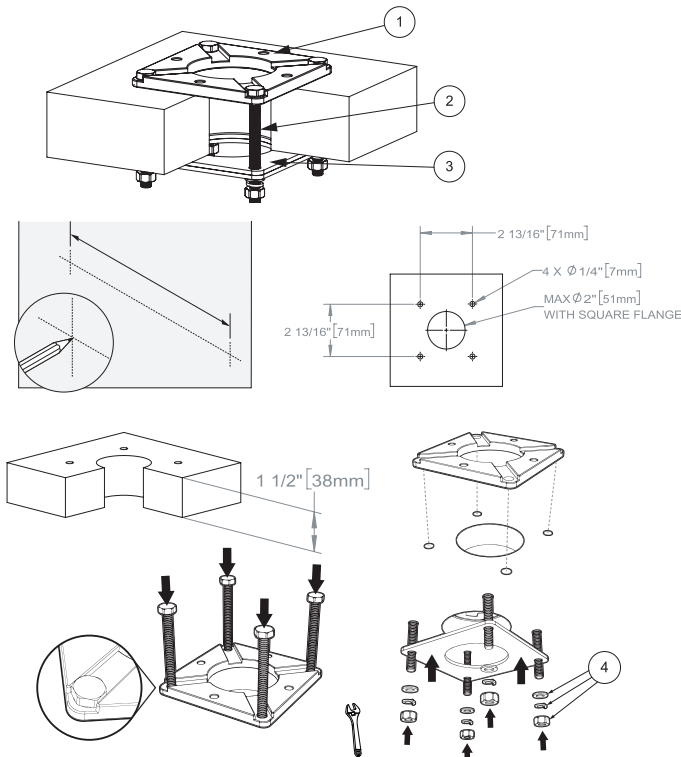
**Dimensions**



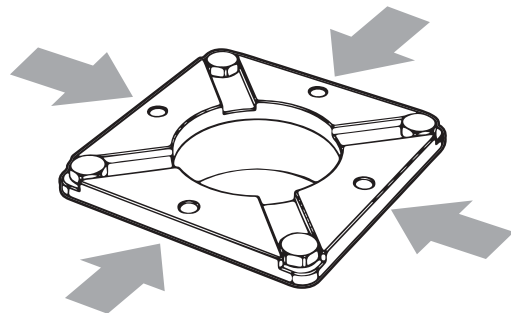
Measurements	
<b>A</b>	7", 178mm
<b>B</b>	2X1/2-14NPSM
<b>C</b>	32-5/16", 821mm
<b>D</b>	11-5/8", 296mm
<b>E</b>	8-7/8", 225mm
<b>F</b>	31-1/8", 790mm

**Note:** Dimensions subject to change without notice.

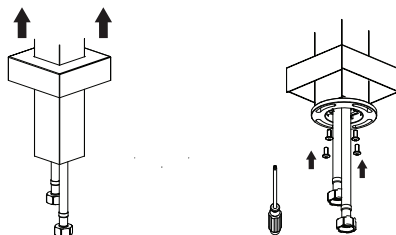
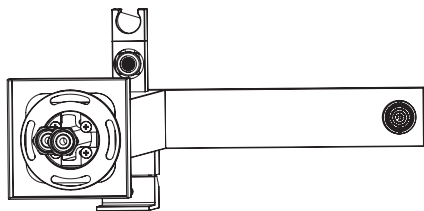
## Installation A) Wooden subfloor with access underneath



### Section A



### Section B



### Section C

### Section A: (Steps 1-4)

1. Measure and mark centerlines for mounting bracket installation using dimensions in the subfloor (1 1/2" thick) where you would like the faucet to be located.
2. Drill a hole 2" and (4x) 1/4" holes. Use the floor flange (1) as a template.
3. Align with the holes of the floor flange (1) and the holes in the floor and insert (4x) bolts (2).
4. From underneath, install the holding plate, washers, lock washers, and nuts (4). Tighten the nuts with a wrench.

### Section B: (Step 5)

5. Install flooring around the floor flange.

### Section C (Steps 6 & 7)

6. Slide the decorative flange onto the faucet body.
7. Attach the flange to the body, using the 4 screws provided.

### Section D (Step 8-10)

#### Direct Faucet body Installation:

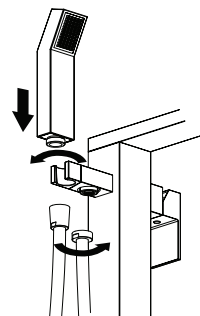
8. Connect the faucet body and the floor flange together using the screws provided.
- Note: do not tighten screws entirely.
9. Before tightening the screws, rotate the faucet body in order to obtain the desired position for the spout.
10. Slide the decorative flange towards the floor.

### Section E (Step 11)

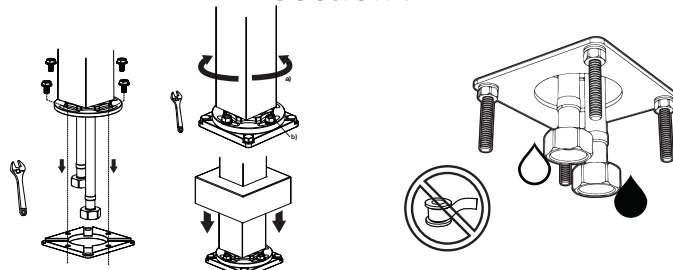
11. Connect the cold and hot water inlets. Check for leaks.

### Section F (Step 12)

12. Connect the hose and handshower to the shower holder connector. Check for leaks.



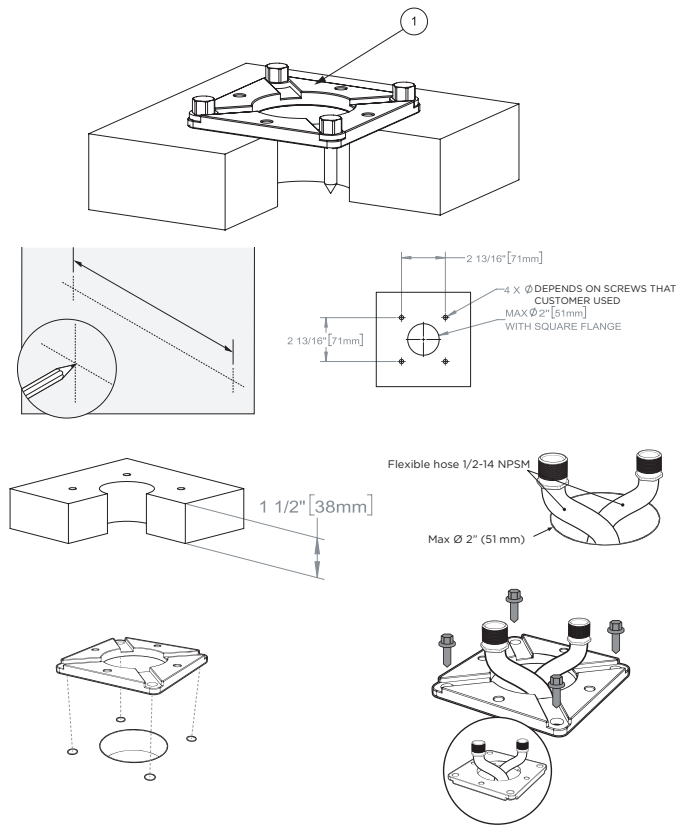
### Section F



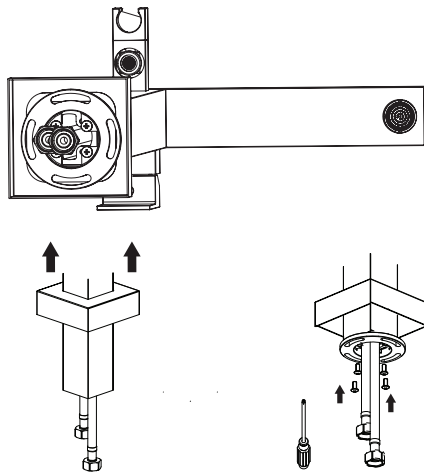
### Section D

### Section E

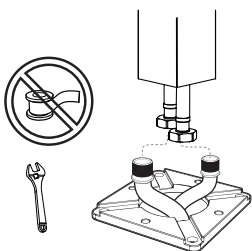
## Installation B) Subfloor without access underneath



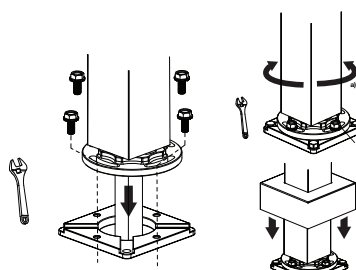
### Section A



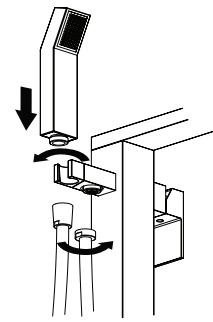
### Section B



### Section C



### Section D



### Section E

#### Section A: (Steps 1-3)

1. Measure and mark centerlines for mounting bracket installation using dimensions in the subfloor (1 1/2" thick) where you would like the faucet to be located.
2. Drill a hole 2" and (4x) holes (diameter depends on screws that customer used). Use the floor flange(1) as a template.

3. Flexible hose 1/2-14 NPSM, aligned with the corner holes of the floor flange and use appropriate screws according to the surface you are fastening the floor flange to (screws not included).

Note: The floor flange can be flipped and used as shown if necessary.

#### Section B: (Step 4 & 5)

4. Slide the decorative flange onto the faucet body.
5. Attach the flange to the body, using the 4 screws provided.

#### Section C (Steps 6)

6. Connect the cold and hot water inlets. Check for leaks.

#### Section D (Step 7-9)

7. Push the connected flexible hoses under the subfloor, then connect the faucet body and the floor flange together using the screws provided.
- Note: do not tighten screws entirely.
8. Before tightening the screws, rotate the faucet body in order to obtain the desired position for the spout.
9. Slide the decorative flange towards the floor.

#### Section E (Step 10)

10. Connect the hose and handshower to the shower holder connector. Check for leaks.