

# 6030STTM – EVERYDAY TUB/SHOWERS

60 x 30 x 75 inches



## FEATURES

- Tub-shower
- Subway tile finish
- Ergonomic backrest
- Above-floor rough
- Slip-resistant textured bottom
- Left or right hand drain
- AcrylX™ applied acrylic surface
- Lifetime limited warranty

## OPTIONS

- Grab bar reinforcement
- Factory installed assisted care grab bars
- Designer drain, waste & overflow

## AQUATIC ADVANTAGE

- National distribution
- 7 manufacturing facilities
- Private fleet
- Centralized customer service
- Field support

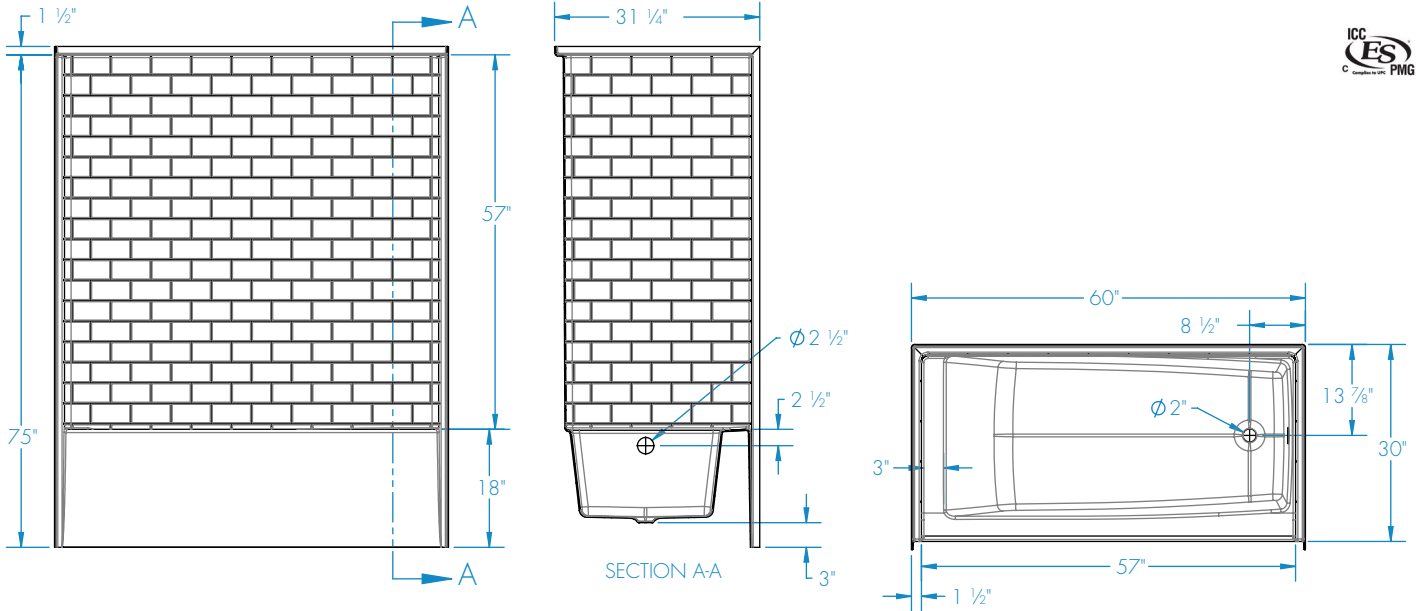
## COLOR OPTIONS

Stock	Upgraded	Premium
White	Almond Biscuit/Linen Bone	Black Mexican Sand Sand Bar Sterling Silver



# 6030STTM

60 x 30 x 75 inches



**FEATURES** lbs      Dimensional Tolerance  $\pm 3/8"$ . Dimensions needed for site preparation should be measured from the unit. Aquatic assumes no responsibility for preparatory work.

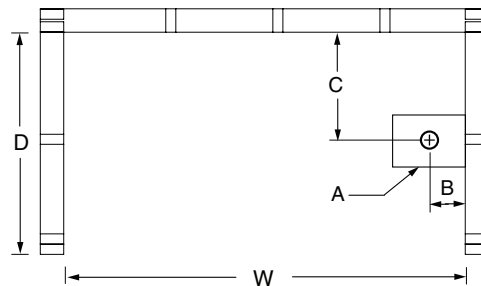
Model #	Material	Wall Finish	Jets	Motor	Controls	Drain	Net Wt.	Pkg. Wt.
AFR Tub-Shower #6030STTM	AcrylX™	Subway Tile	-	-	-	LH or RH	125	130

## DIMENSIONS

Specifications	inches
Width: Overall / Net	60
Depth: Overall / Net	31 1/4 / 30
Height: Overall / Net	76 1/2 / 75
Enclosure Opening	57
Skirt Height	18
Drain Rough-In (from Back Wall)	13 7/8
Drain Rough-In (from Side Wall)	2 5/8
Drain: Diameter / Clearance	2 / 3

## FRAMING DIMENSIONS inches

Type	D Depth	W Width	H Height	A	B	C
Alcove	31 1/2	60 1/8	-	Box Out	2 5/8	13 7/8



## SUMP DATA

Top of Drain to Bottom of Overflow	Capacity to Overflow gal	Min. Operating Capacity gal	WIDTH @ centerline		DEPTH @ centerline	
			Top	Bottom	Top	Bottom
10 3/8	44	-	52 1/4	43 1/2	24 1/2	21 3/4