



OLYMPIA FAUCETS, INC.
3325 S. Garfield Ave.
Commerce, CA 90040
(888) 772-7701
www.olympiafaucets.com

INSTALLATION

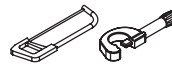
Tools:



Adjustable
Wrench



Teflon Tape



Hacksaw &
Pipe Cutter



Propane
Torch



Lead-Free
Solder



PEX Crimp
Tool



Model Number: V-2500B

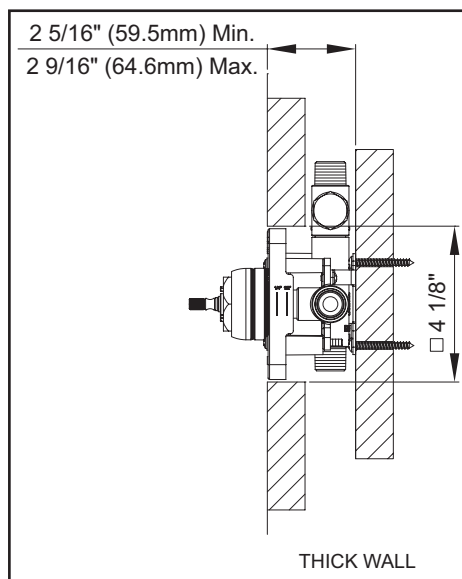
Warnings and Notes:

Check with local plumbing code requirements before installation.
This product should be installed by a local listed plumber.

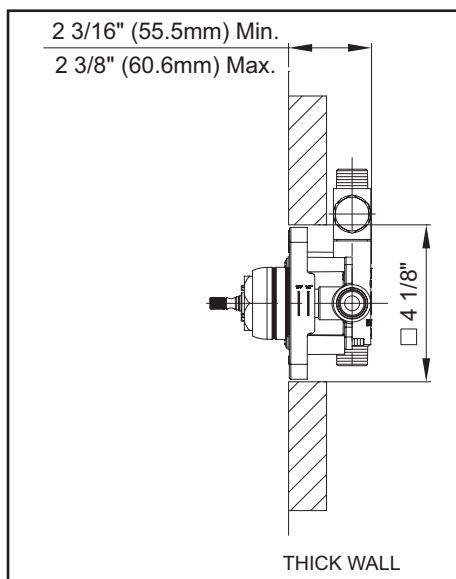
Do not use plumbers putty on threads.

Installation Steps:

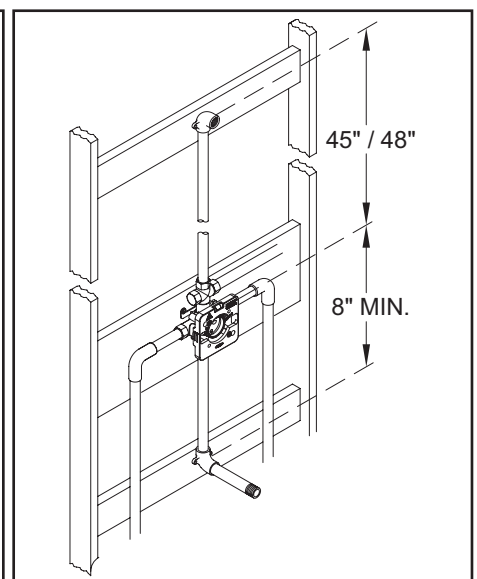
Single Handle Tub/Shower Pressure Balancing Valve With Built-in 2 Way Diverter



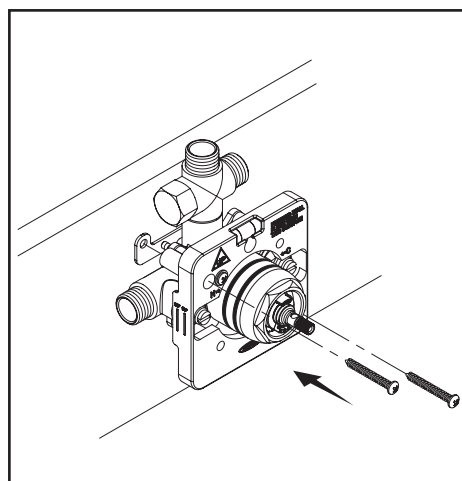
(1) Installation Distance With Bracket.



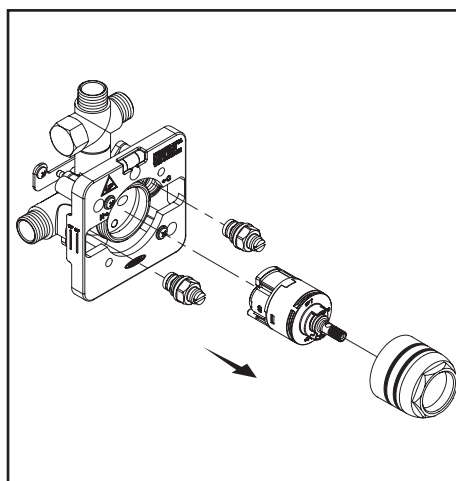
(2) Installation Distance Without Bracket.



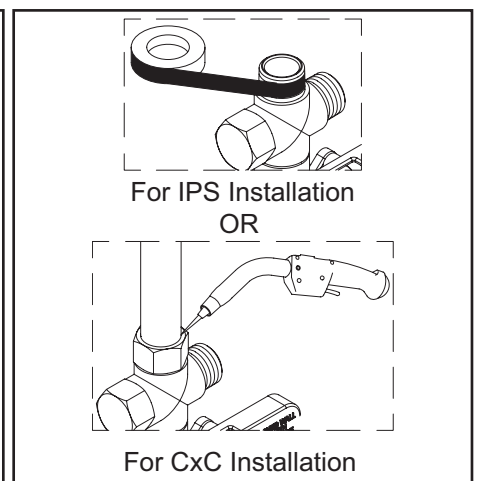
(3) For Tub Spout Use 1/2" copper or IPS Pipe
Only For Shower Only Use Provided 1/2" Cap to
cap tub outlet.



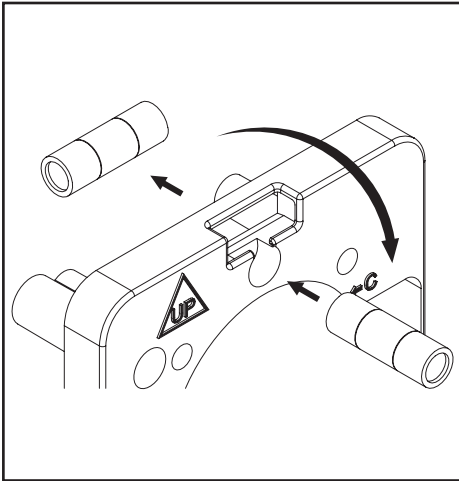
(4) Install Valve with 2 Wood screws provided.



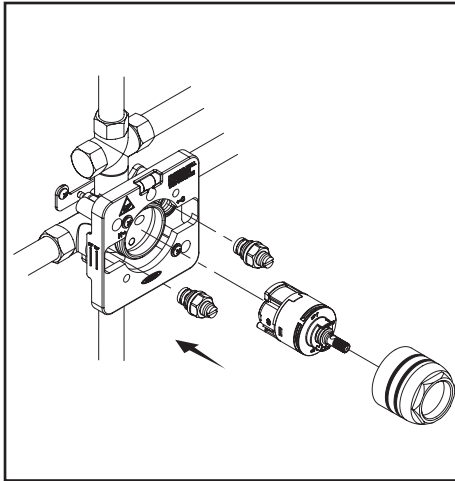
(5) For CXC Installation :- Remove Mud Guard
Plate, Sleeve Nut, Test Cap And Inlet Stop As-
semblies Before Soldering.



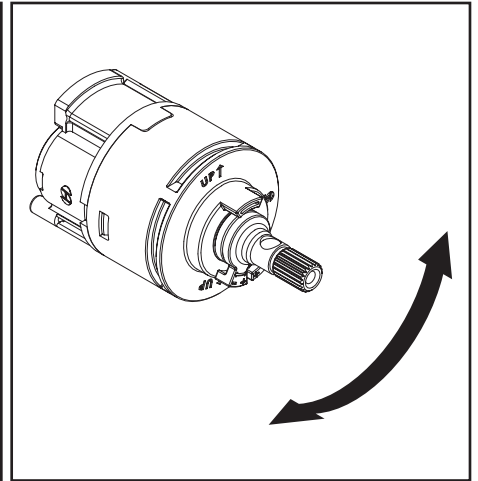
(6) Connect valve body to water inlets using the
proper fittings (Copper, IPS, PEX-Crimp, PEX-
Cold Expansion, CPVC). Note:- For PEX, be
sure to use the right fitting for crimping and the
right fitting for Cold Expansion.



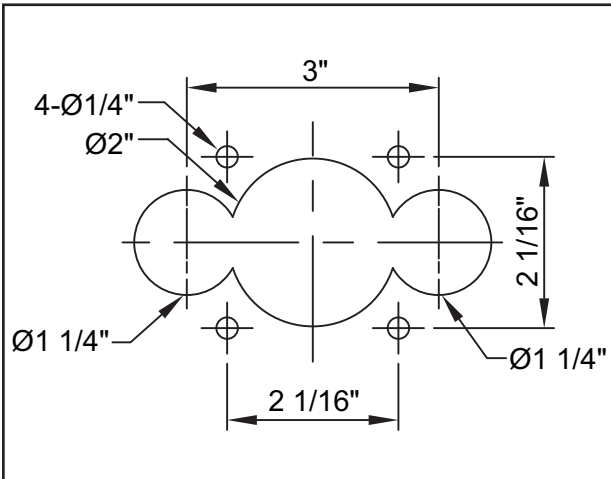
(7) Ensure Valve is leveled. To check vertical leveling remove level and put in the front hole in mud guard.



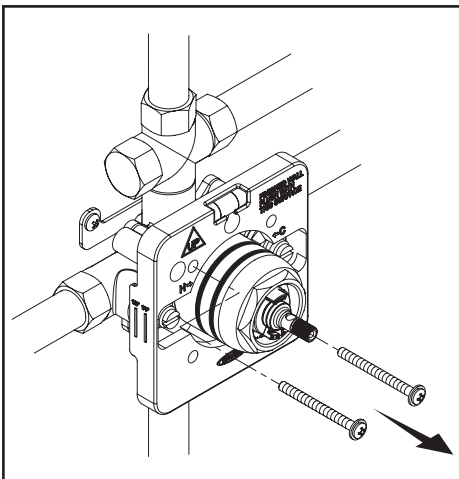
(8) For CXC Installation :- Assemble Cartridge, Sleeve Nut and Inlet Stop Assemblies after installation was completed. Please Note That Do Not Tighten More Than 15 Lbs / Inch² While Replacing Inlet Stop Assemblies. Overtightening May Cause Damage To The Inlet Stop Assemblies.



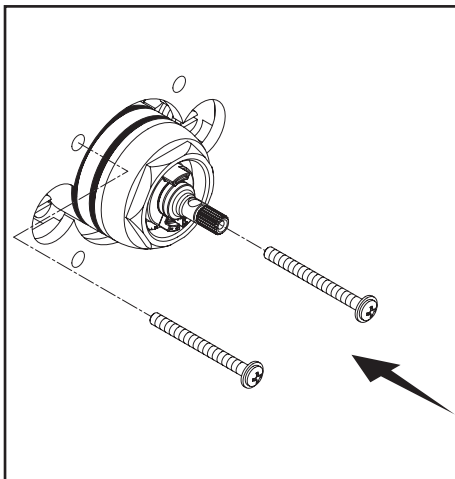
(9) Turn on water supplies then turn the cartridge to the left and to the right to test the valve function properly.



(10) **For Thin Wall Installation:-** Use Provided template for thin wall installation.



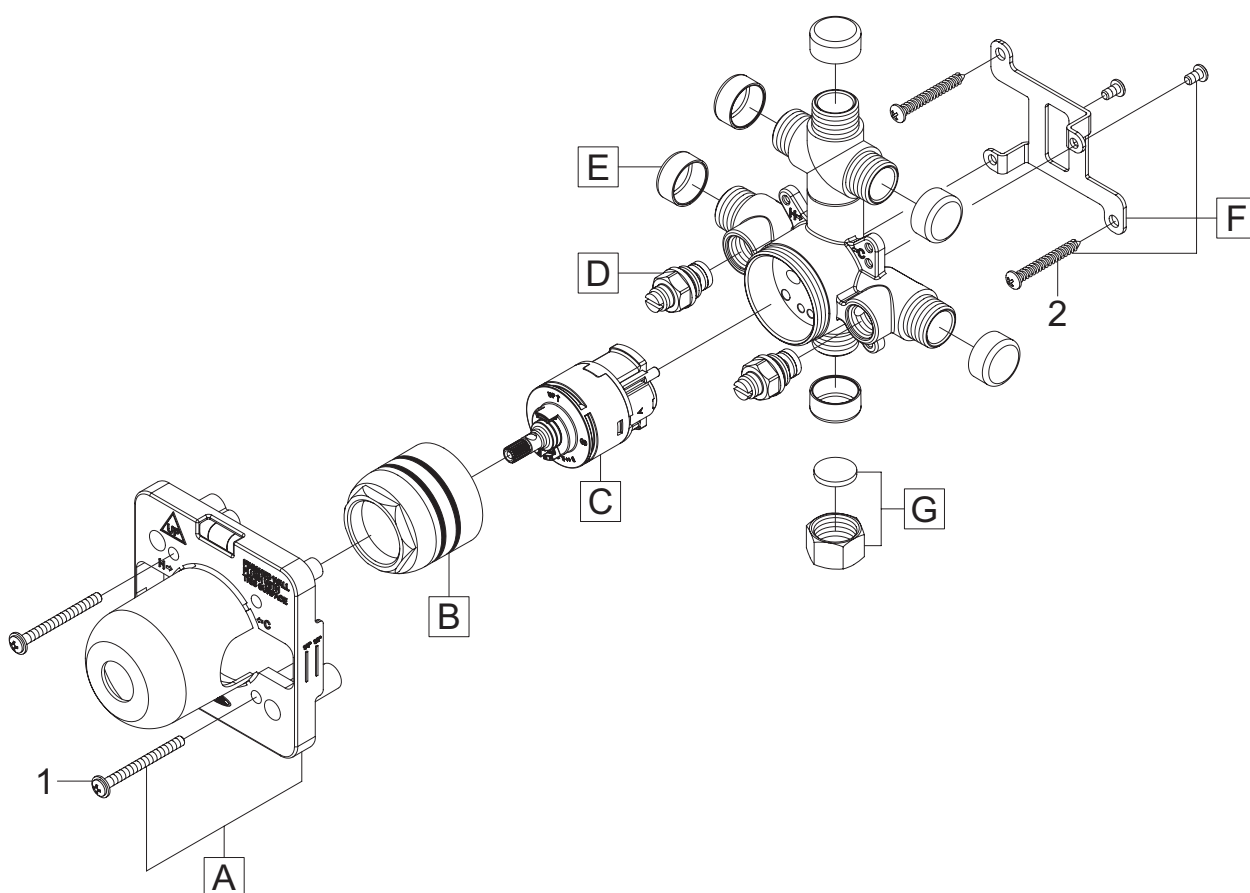
(11) Remove Mud guard screws.



(12) Use Mud guard screws to secure valve to thin wall.

Exploded Drawing:

	ITEM #	DESCRIPTION
A	OP-440059	Mud Guard
B	OP-440053	Sleeve Nut
C	X-3400008	Pressure Balancing Two Way Diverter Cartridge
D	OP-440007	Inlet Stop Assembly
E	OP-440023	Protective Cap
F	OP-540003	Mounting Bracket With Screws
G	X-4900025	Cap and Washe
1	OP-440063	Mud Guard Screw
2	X-4900055	Mounting Bracket Screws



For more care information or trouble shooting inquiries
about your Olympia product, Please call:

OLYMPIA FAUCETS, INC. (888) 772-7701

Monday-Friday 8 AM to 8 PM EST (5 AM to 5 PM PST)

www.olympiafaucets.com

Jul. 13. 22